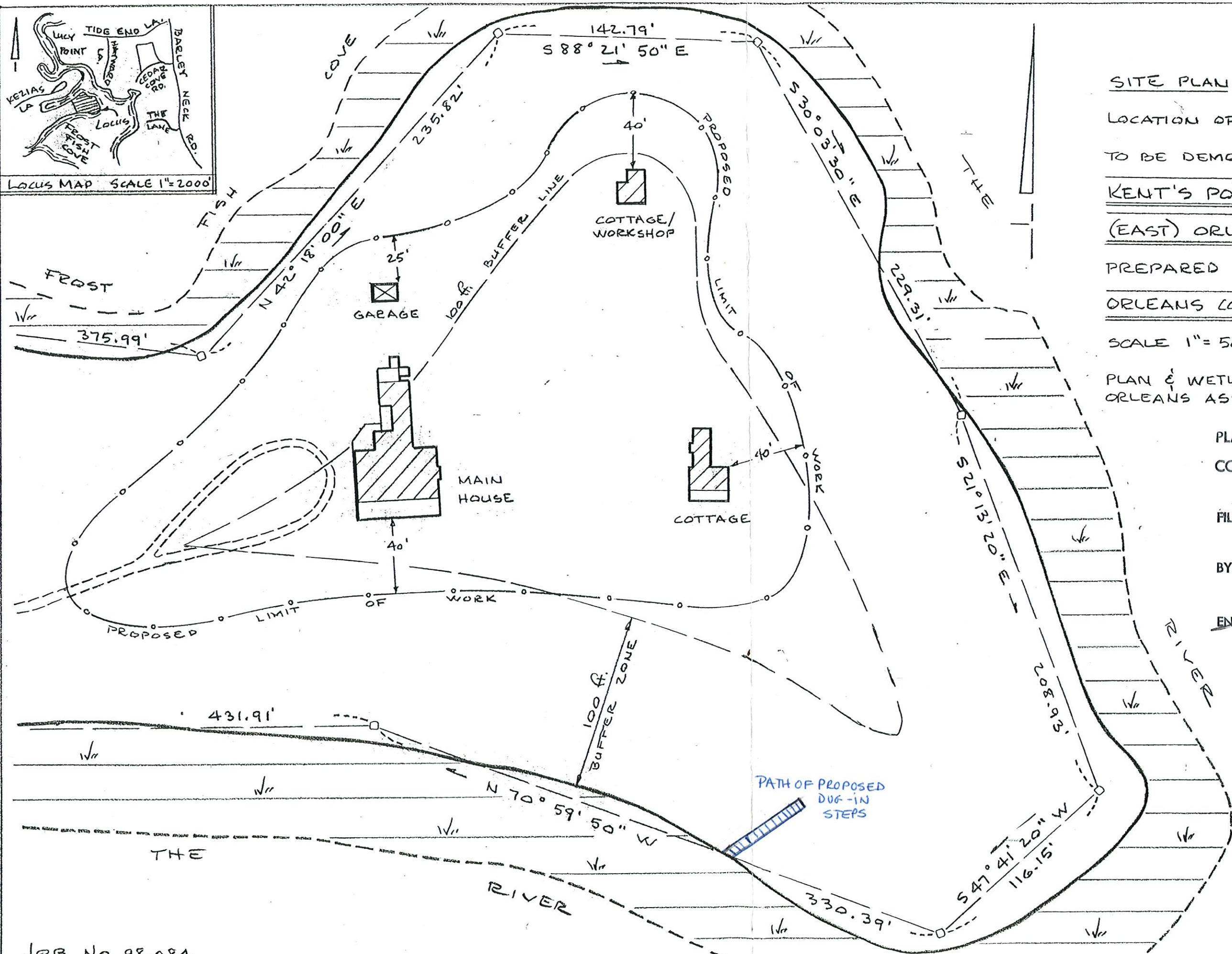


LOCUS MAP SCALE 1"=2000



SITE PLAN SHOWING
 LOCATION OF BUILDINGS
 TO BE DEMOLISHED
KENT'S POINT
(EAST) ORLEANS, MASS.
 PREPARED FOR
ORLEANS CONSERVATION COMMISSION

SCALE 1"=50' JANUARY 15, 1999
 PLAN & WETLAND TAKEN FROM
 ORLEANS ASSESSORS MAPS,

PLANS APPROVED BY ORLEANS
 CONSERVATION COMMISSION

FILE # SE 54-1459

BY ME DATE 10/17/00

ENGINEER [Signature]

PREPARED BY:
 east cape engineering, inc.
 CIVIL ENGINEERS
 LAND SURVEYORS
 44 Rte. 28, ORLEANS, MASS.
 TEL. 508-255-1110

DATE 1/19/99

[Signature]
 P.E.

