



ORLEANS COMMUNITY CENTER STUDY
COMMUNITY WORKSHOP

TONIGHT'S AGENDA

Part 1: Welcome & Project Overview

Part 2: Orleans Community Center Study Overview

- Background research
- Survey information review
- Community center options

Part 3: Community Input Activities

3.1 - Post-It note questions 1-4

3.2 - Program priorities survey

3.3 - Breakout group drawing/mapping session

Part 4: Open Mic Questions & Closing Remarks

WHO WOULD A COMMUNITY CENTER BE FOR?

Preliminary surveys suggest that there is broad interest from people of all ages for a place to meet, play, learn and create.



WHAT KIND OF PROGRAMS SHOULD BE ACCOMMODATED?

The Rec. Dept. and Council on Aging, if they need to move, could sponsor a range programs that would be designed to be flexible to meet changing needs.



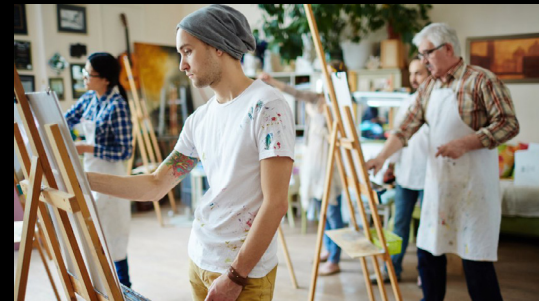
CHILDCARE



RECREATION



AFTER SCHOOL PROGRAMS



ARTS



COUNCIL ON AGING



SOCIALIZING

WHAT KIND OF ACTIVITIES SHOULD BE ACCOMMODATED?

Some spaces might be designed around specific uses with specialized furnishings. Others could accommodate different activities at different times.



COMMUNITY LIVING ROOM / LOUNGE



FLEXIBLE EVENT SPACE



EVENT KITCHEN / COOKING CLASSES



YOGA / DANCE / FITNESS CLASSES



CARDIO & WEIGHT MACHINES



GAME ROOM



BOOK, KNITTING, SOCIAL CLUBS



WELLNESS ROOM



WALKING PATHS

COMMUNITY CENTER ACTIVITY OPTIONS CONT.

A basketball court could host banquets and performances. Outdoor spaces are important with generous and welcoming indoor/outdoor connections.



MUSIC ROOM



BASKETBALL COURT



COMPUTER TRAINING / LAB



ARTS & CRAFTS / ART CLASSES



OUTSIDE LIVING ROOM / LOUNGE



COMMUNITY GARDEN



DESIGN, WOODWORKING, TINKER SHOP



EXTERIOR LEAGUES (BOCCE, SHUFFLEBOARD)

ADDITIONAL
PROGRAMMING /
ACTIVITY IDEAS?

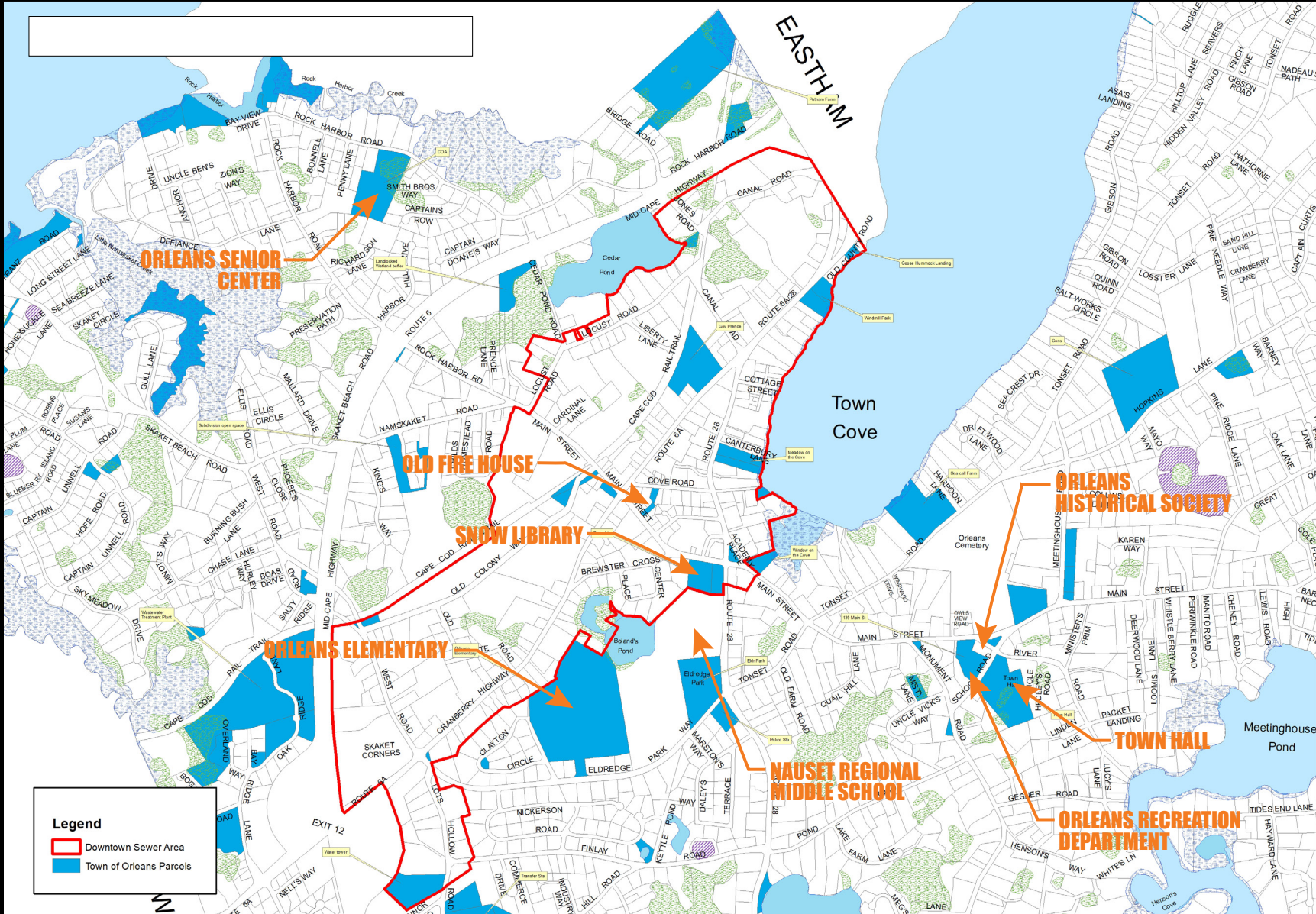
WHERE SHOULD IT BE LOCATED?

This study focuses on community center program options responsive to Town needs. Open land is in short supply and finding a site may be a challenge.



WHERE SHOULD IT BE LOCATED?

An ideal location for a community center might be near other town resources, like the schools, within the planned sewer area.



WHAT OTHER COMMUNITY FACILITIES DOES ORLEANS HAVE?

The community center team looked at other community oriented facilities in Orleans so that new facilities would complement rather than compete.

COUNCIL ON AGING



HISTORICAL SOCIETY BUILDINGS



PUBLIC LIBRARY



OLD FIRE HOUSE



WHAT OTHER COMMUNITY FACILITIES DOES ORLEANS HAVE?

The Rec Dept. is severely under-resourced. The COA is threatened by rising waters. Schools focus on students. The Library is planning to expand.

NAUSET REGIONAL
MIDDLE SCHOOL



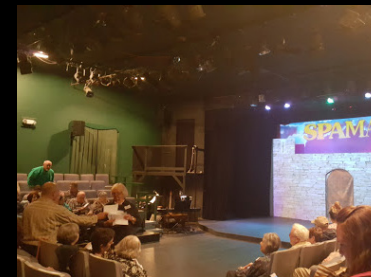
ORLEANS ELEMENTARY



RECREATION



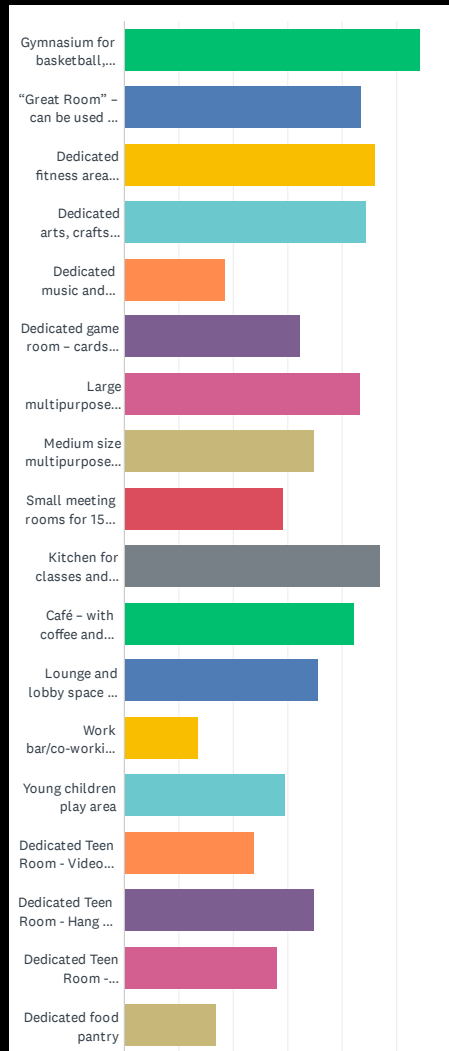
PLAYHOUSE



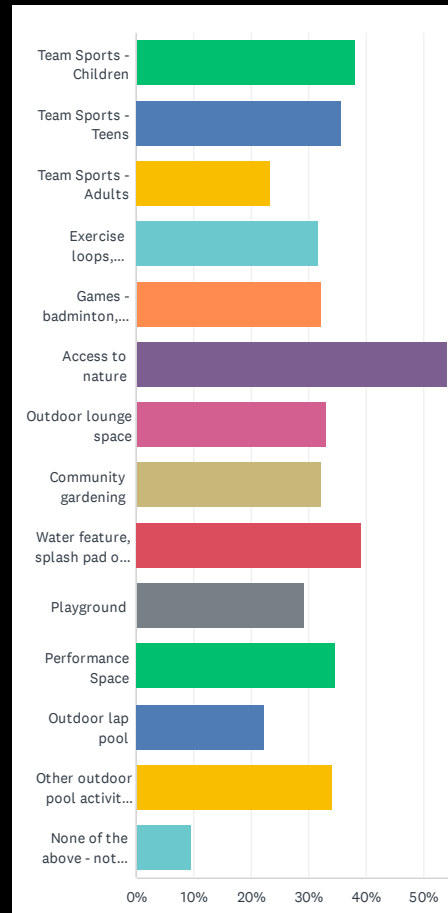
WHAT DID THE SURVEYS TELL US?

The online survey this spring indicated a broad range of interests - arts, fitness, social activities - by a broad range of people at all times of the day and week.

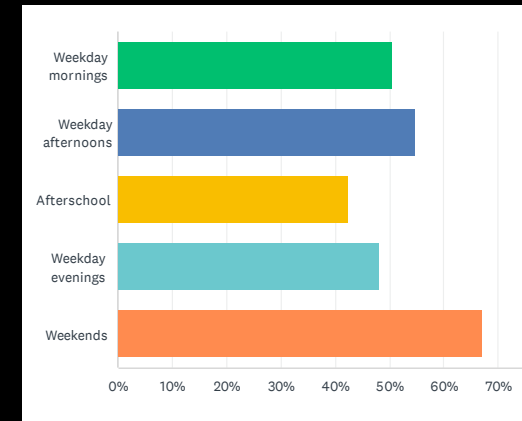
Q6 - Check off the following options that are the most important to you:



Q7 - Check off the following options that are the most important to you:



Q8 - Which times you or your family members would be most likely to use a community center:



PRELIMINARY CONCLUSIONS FROM WORK TO DATE

The survey, interviews with community members and Task Force outreach suggests the following priorities

- + A community center should be **multi-generational** welcoming everyone
- + It can be built in **phases** as financing allows
- + It should **complement**, not compete, with other resources.
- + **Recreation** and **arts** are priorities - the library can meet other needs.
- + **Teen** and “tween” spaces are important and are often overlooked
- + A **gym** is important and can be a performance and banquet space.
- + Rising water may force the **Council on Aging to move** - and combining it with a community center offer many efficiencies
- + **Child care**, formal programs or informal spaces, serve children & parents.
- + Having enough **storage** space is critical to meet changing needs.

PRELIMINARY CONCLUSIONS FROM WORK TO DATE CONT.

- + Spaces should be **flexible** - with operable walls - to meet changing needs.
- + Informal **social space** are just as important as defined program spaces
- + Ideally a community center is a **walkable** distance from the Town center
- + **Site should be big enough** to allow expansion, parking & outdoor uses.
- + By providing facilities that people now have to drive to other towns to access, a community center provides a model for a more **sustainable, equitable and socially engaged** way to live.
- + A community center can be designed to be like a **village**: with program areas cluster around a “town green” or lined up along a “street”.

SMALL COMMUNITY CENTER WITH AND WITHOUT COA

SMALL COMMUNITY CENTER

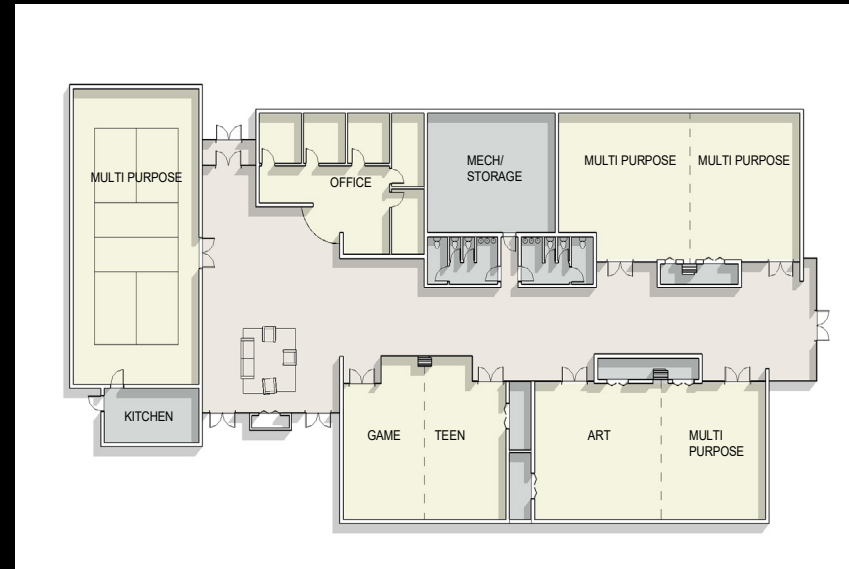
REC Offices	600
Warming Kitchen	250
Lobby/Lounge	700
Game Room	650
Teen Room	700
Small Fitness/Multipurpose Room	650
Medium Fitness/Multipurpose Room	1,000
Medium Fitness/Multipurpose Room	1,000
Large Fitness/Multipurpose Room (pickle ball plus out of bounds)	1,800
Art Room and Craft Room	1,000
Bathrooms	300
Storage	500
Mechanical/Maintenance	300
Circulation	800
Net to Gross	1,200

Total 11,450 SF

SMALL COMMUNITY CENTER /COA (Add to above)

COA Offices	800
Wellness	150
Conference	200
Bathrooms	100
Storage	300
Med Storage	400
Kitchen Storage	200
Full kitchen	250
Day Center	1,000
Circulation	400
Senior Lounge	600
Activity Area 7	650
Net to Gross	500
COA Add	5,550

Total 17,000 SF



Small Community Center



Small Community Center + COA

MEDIUM COMMUNITY CENTER WITH AND WITHOUT COA

MEDIUM COMMUNITY CENTER (Add to small)

Off, Stor, Mech, Bathrooms add	1,000
Medium Fitness/Multipurpose Room	1,000
Arts Room	1,000
Weight Room	1,000
Children's Play Area	400
Circulation, Lobby add	600
Net to Gross add	1,000
Community Center Add	6,000

Total 17,450 SF



Medium Community Center

MEDIUM COMMUNITY CENTER /COA (Add to above)

Senior Center Add	5,550
-------------------	-------

Total 23,000 SF



Medium Community Center + COA

LARGE COMMUNITY CENTER WITH AND WITHOUT COA

LARGE COMMUNITY CENTER (Add to medium)

Lobby/Lounge add	400
Locker Rooms/Showers	800
Gymnasium/ Basketball	7,200
Off, Stor, Mech, Bathroom	500
Circulation add	500
Net to Gross add	1,000
Community Center Add	10,400

Total 27,850 SF



Large Community Center

LARGE COMMUNITY CENTER /COA (Add to above)

Senior Center Add	5,500
-------------------	-------

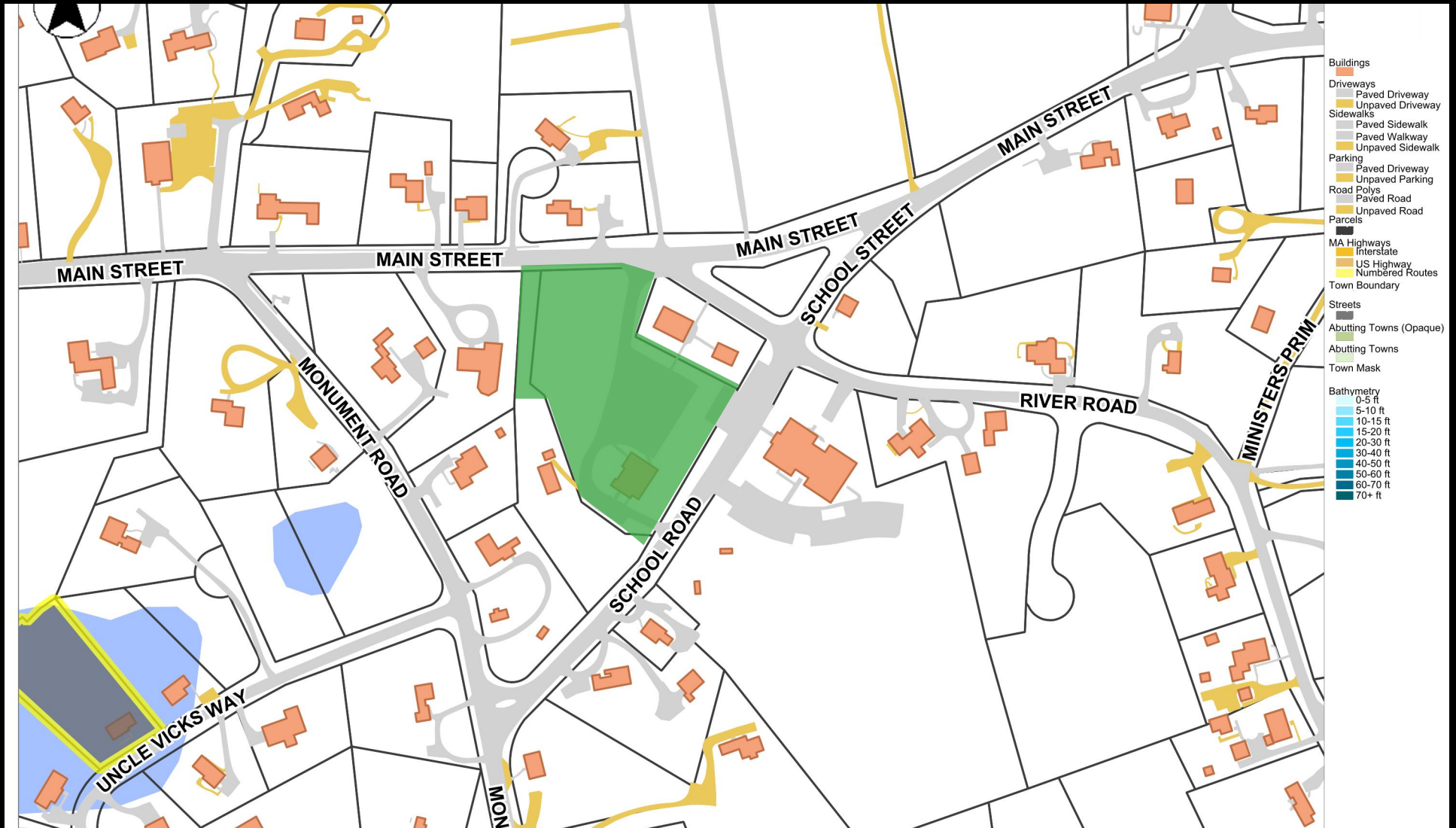
Total 33,350 SF



Large Community Center + COA

HYPOTHETICAL COMMUNITY CENTER SITE

To see how the program could be accommodated on a site we looked at a location on Main St. adjacent to Town Hall and Historical Society - forming a civic campus.



HYPOTHETICAL COMMUNITY CENTER TEST FIT PLAN

Program elements line an interior “street” facing parking opposite the Historical Society and Town Hall. Narrow ends minimize the impact of the 29,400 sf program.



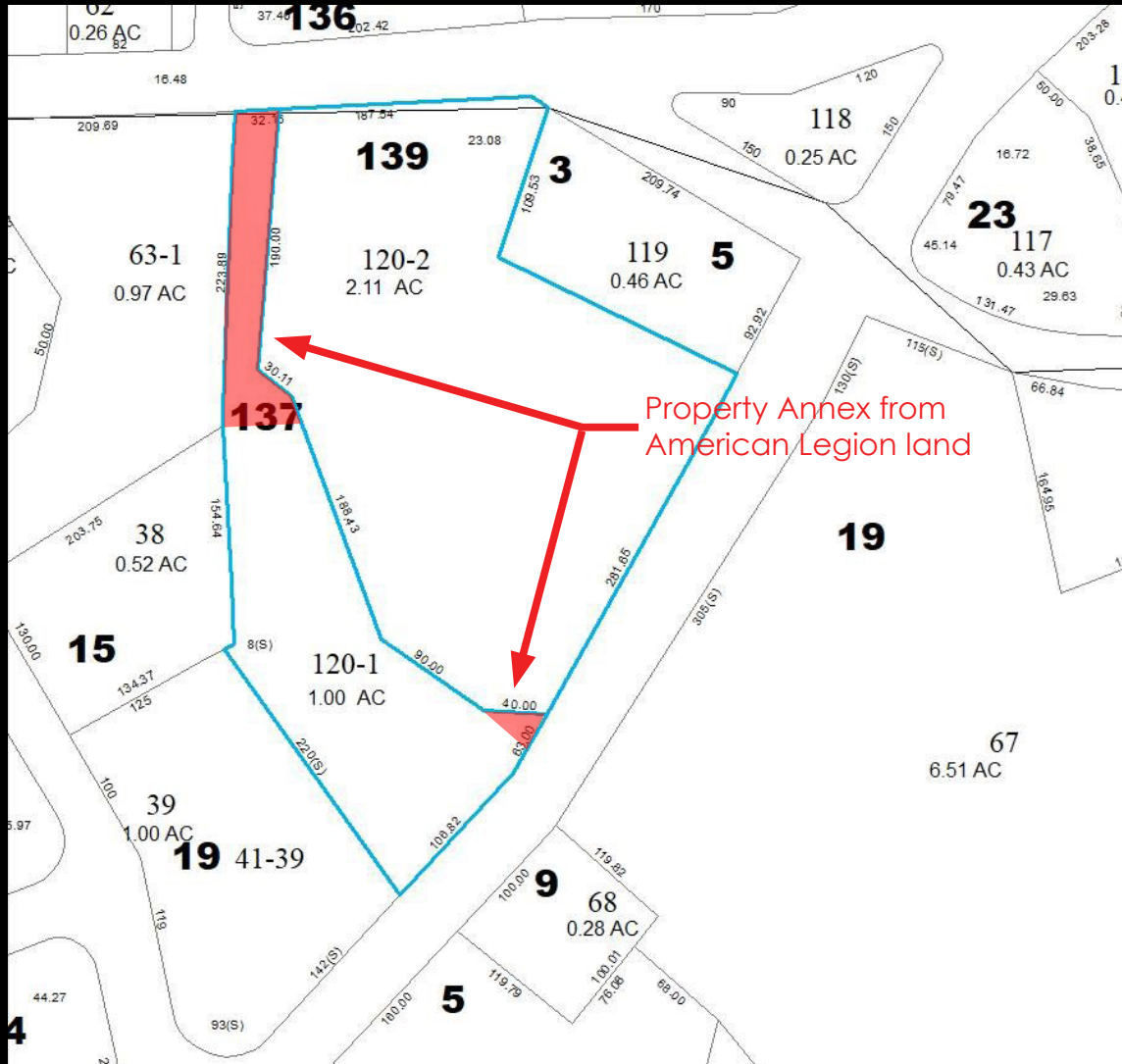
BUILDING PLAN

The plan suggests large spaces, small spaces, open spaces and closed spaces, operable walls, and storage. Spaces are open -but not too open.



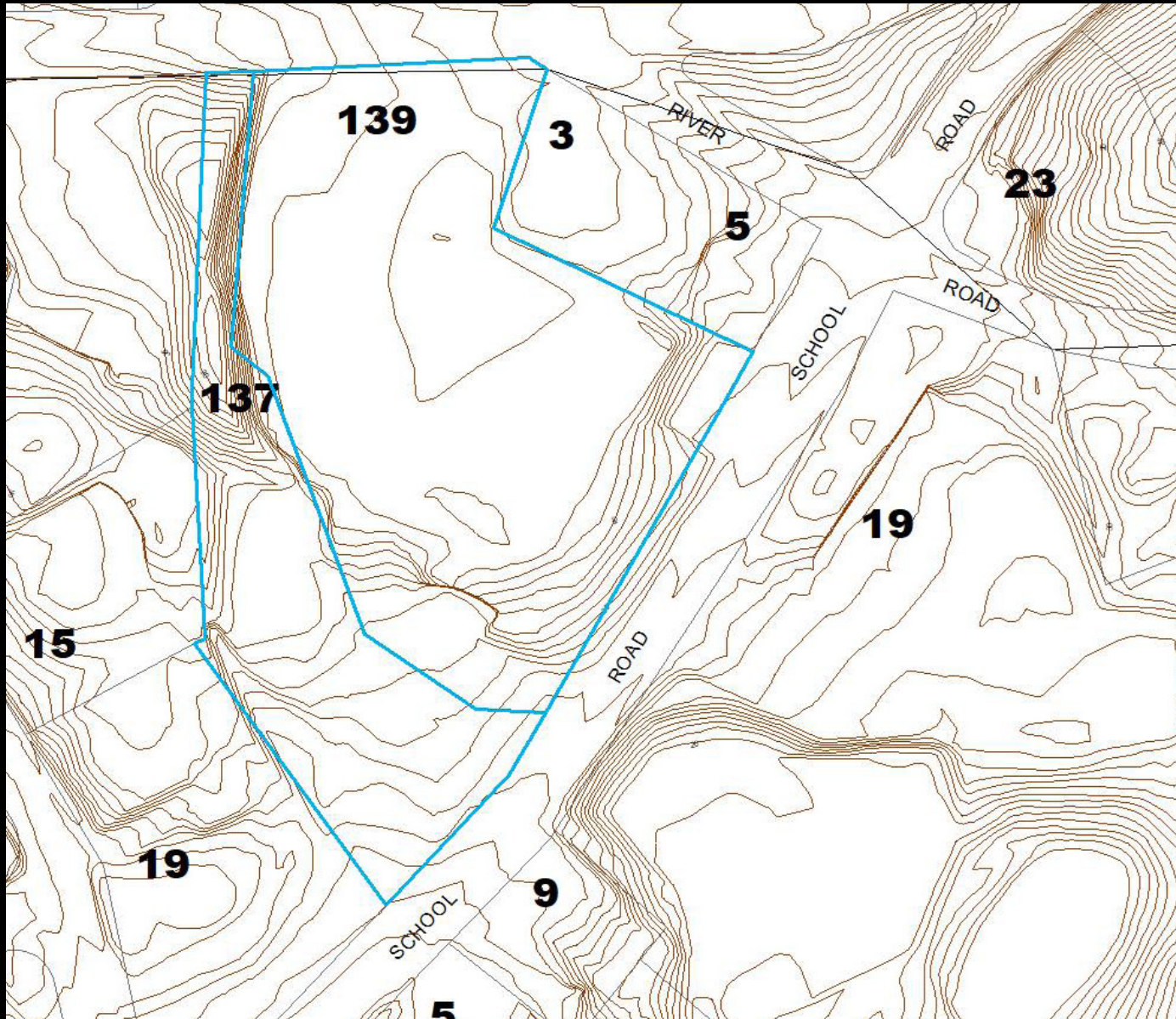
HYPOTHETICAL SITE EXPANSION

Town owned site is just over two acres - not quite big enough. The plans suggest purchasing small but important slivers of land from the American Legion.



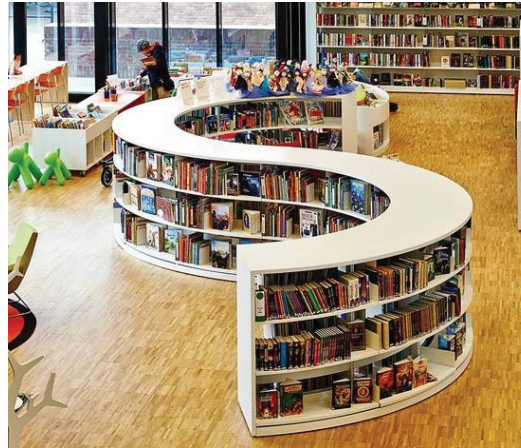
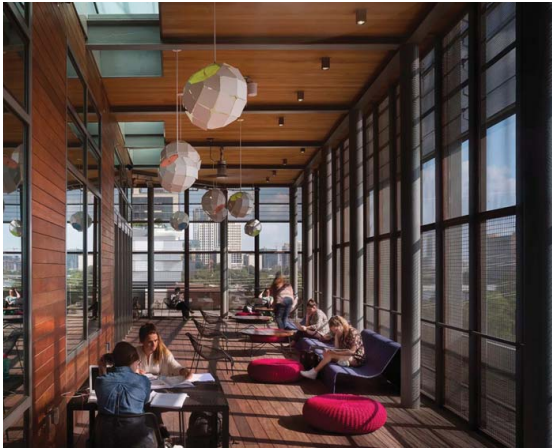
TOPOGRAPHIC CHALLENGES

Every site has its challenges. Here topography would need to be dealt with. Other sites have wetlands, traffic, contamination or concerned abutters.



WHAT MIGHT THE FORMS AND SPACES LOOK LIKE?

Interior spaces can take a variety of forms and support a different uses. Images suggest some of the possibilities for the reading/meeting, kids areas, etc.



WHAT MIGHT THE FORMS AND SPACES LOOK LIKE?

Bright colors, warm wood, high windows, glass walls, cozy corners, soaring roofs - are all ways to connect people to each other and the world around them.



PART 3.1: - ACTIVITY: POST-IT QUESTIONS

Post-it Note Activity Instructions:

1. We are passing out pens and a board with sticky notes stacked up in 4 colors.
2. Each color sticky note represents one question, projected on the following slides.
3. Provide short, focused thoughts.
4. Once you have written your answer to each question, please pass your sticky note to the person collecting them.
5. Hold on to your pen & cardboard backing for the later survey.
6. Once all answers are received and displayed we will discuss our findings.

PART 3.1: ORLEANS COMMUNITY CENTER - QUESTION #1



Please respond using the PURPLE Post-It

Why did you decide to come this evening and what did you want to accomplish ?

PART 3.1: ORLEANS COMMUNITY CENTER - QUESTION #2



Please respond using the BLUE Post-It

**Is your priority a multi-generational facility,
or is there a particular group the community
center should focus on?**

PART 3.1: ORLEANS COMMUNITY CENTER - QUESTION #3



Please respond using the GREEN Post-It

We've heard that the community center should focus on arts, fitness and social activities. What are your priorities?

PART 3.1: ORLEANS COMMUNITY CENTER - QUESTION #4



Please respond using the YELLOW Post-It.

**What needs to happen to make this project
successful?**

PART 3.2: ORLEANS COMMUNITY CENTER PRIORITIES

Using the sheet we have handed, prioritize these options. 12 is your highest priority, 1 is your lowest.



RELOCATED COUNCIL ON AGING



PRE-SCHOOL/CHILDREN'S PLAY



TEEN ROOM



CAFE / LOUNGE / SOCIAL SPACE



GYMNASIUM



FLEXIBLE MULTIPURPOSE ROOMS



CARDIO & WEIGHT MACHINE



SWIMMING POOL



PICKLE BALL



ARTS AND CRAFTS



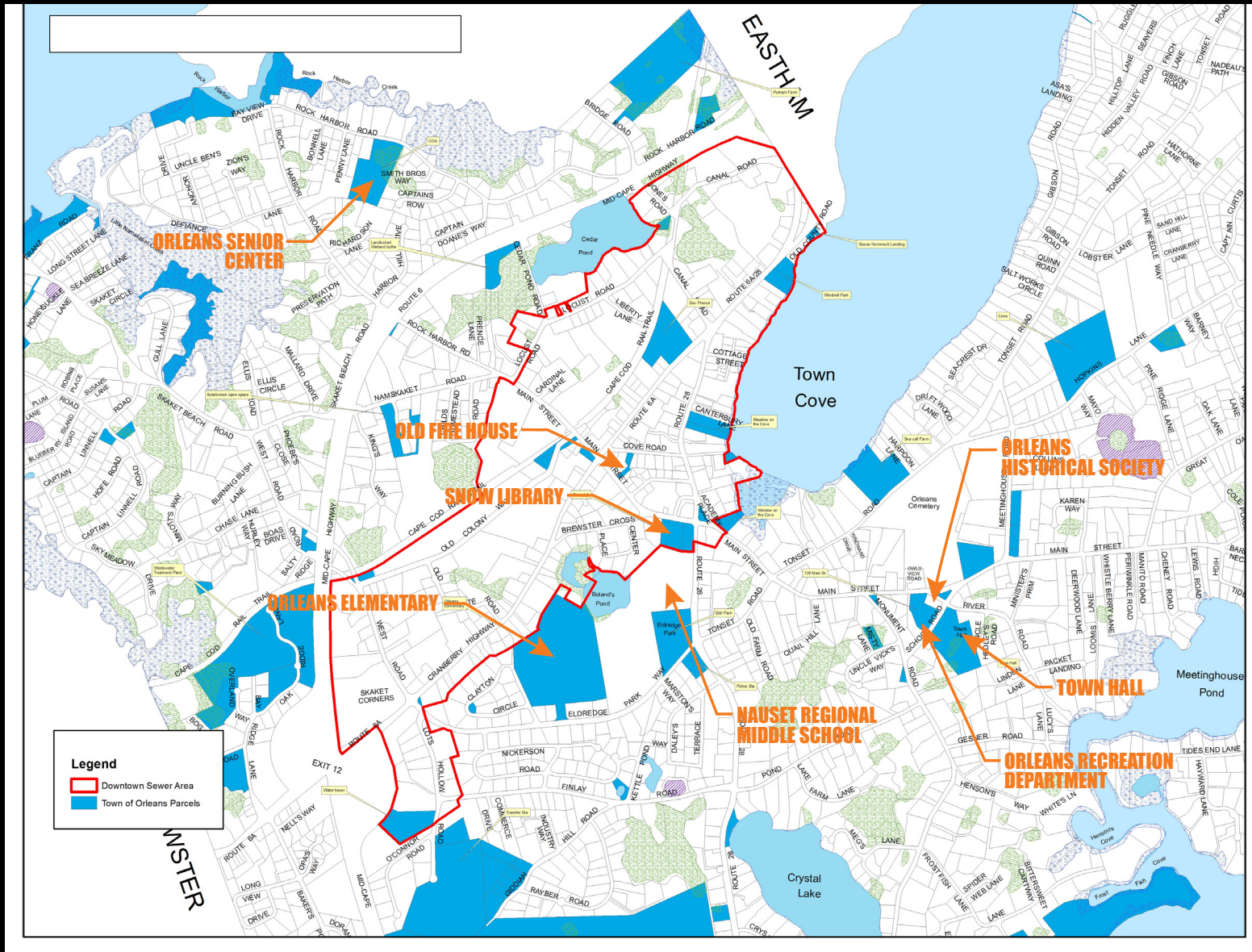
GAME ROOM



OPEN KITCHEN - CLASSES ETC.

PART 3.3: ORLEANS COMMUNITY CENTER - POSSIBLE LOCATION

Please break into groups around the maps of Orleans and provide input on the areas to consider for a community center location.



QUESTIONS AND CLOSING REMARKS

THANK YOU FOR COMING !
OPEN MIC QUESTIONS AND DISCUSSION