

Memorandum

To George Meservey, Director of Planning and Community Development
 Michael Domenica, PE, Program Manager

CC Betsy Shreve, AICP, AECOM Project Director
 Sia Karplus, Science Wares, Inc.
 Anamarija Frankić, PhD, University of Massachusetts Boston, Green Harbors Project
 Mark Begley, MT Environmental Restoration
 Paula Winchell, AECOM

Subject **Town of Orleans, MA
 Water Quality and Wastewater Planning
 Task 10.1.B.1 - Lonnie's (Kescayo-Gansett) Pond Oyster Aquaculture
 Demonstration Project Year 1 Project Report - Draft**

Project Number 60476644

From Thomas Parece, P.E., AECOM Project Manager

Date 02/16/17

| Approvals | Date | Signature / Initials |
|---|------|----------------------|
| George Meservey, Orleans, MA Director of Planning and Community Development | | |
| Michael Domenica, PE, Water Resources Associates, Program Manager | | |

Executive Summary

This Technical Memorandum for the Kescayo-Gansett (Lonnie's) Pond Oyster Aquaculture Demonstration (Tech Memo) documents the planning history, installation details and data collected during the first year of this three-year demonstration project. Detailed information related to a long-term oyster program for nitrogen-removal in Lonnie's Pond, as well as the plan for the second year of the demonstration program are also presented. Section contents are as follows:

- Section 1 describes the overall purpose and rationale for shellfish demonstrations;
- Section 2 explains the specific purpose of the Lonnie's Pond demonstration;
- Section 3 details the process that was used for deciding to pursue a demonstration in Lonnie's Pond;
- Section 4 presents the system that was used for installing this demonstration in the field;
- Section 5 presents the data collection methodology and results obtained for growth, mortality and nitrogen-content of the oysters that were grown;
- Section 6 describes the operation and maintenance of the project;
- Section 7 presents the overwintering system that was developed and installed;

- Section 8 is a review of relevant sections of the demonstration monitoring technical report (Howes et al. 2017) that was prepared by staff from the University of Massachusetts School for Marine Science and Technology (SMAST);
- Section 9 details several long-term implementation options for oysters as a nitrogen-removing strategy in Lonnie's Pond that are based on the results of the first year of this demonstration;
- Section 10 describes the second year of the demonstration that is aimed at validating several key parameters of the long-term plan, with a detailed budget; and
- Section 11 describes the next steps for continuing this demonstration project.

The first year of the Lonnie's Pond demonstration project has confirmed that oysters deployed in a one acre site can remove an amount of nitrogen from the water in Lonnie's Pond that is equivalent to the Massachusetts Estuaries Project (MEP) annual nitrogen removal target as well as the Total Maximum Daily Load (TMDL) for this subembayment. The total nitrogen removal target is approximately 300 kg annually and the TMDL is 0.82 kg of nitrogen per day (Howes et al. 2006). The critical impairment period is from July 1 to August 31 (Howes et al. 2006, Howes et al. 2017).

The first-year project quantitatively evaluated:

- Total nitrogen removal associated with uptake from oyster growth;
- Total nitrogen removal through denitrification from enhanced biochemical processes in the sediment caused by oyster biodeposits. though an increase in total nitrogen removed through denitrification is expected in the year two data due to the denitrification process continuing even after the oysters were removed from the area;
- Site capacity for grow-out in high density gear; and
- Site suitability for overwintering.

The first-year demonstration was designed to install 200,000 second year oysters. Due to the availability, approximately 65 percent of the individuals deployed were second-year, averaging 65 mm/18 g each. The balance of the oysters installed were early first-year seed and averaged 22 mm/1.2 g each. This mass of oysters was adequate for preliminary assessment of oyster-enhanced denitrification, while also allowing the growth rates and associated nitrogen uptake for both first and second year oysters to be measured. The monitoring results (Howes et al. 2017) suggest that the mass of nitrogen removed by denitrification is approximately 68 percent of the mass of nitrogen taken out of the water column by the growth of the oysters.

It was also determined that first year oysters have the greatest potential to provide a cost-effective solution with the lowest possible visual impact, and still remove nitrogen from Lonnie's Pond in a way that achieves the total annual nitrogen reduction target and meets TMDL requirements during the critical impairment period of July and August. Although deployment of second year oysters produces a larger accumulation of biodeposits earlier in the season, it is not clear whether this is necessary for TMDL compliance. The second year of the demonstration is designed to include both size classes and is intended to make this determination.

These two size classes of oysters are referred to as Y1 and Y2 throughout the report, with the size of oysters installed on or about May 1 as follows:

- Y1: oysters begin at 2 to 3mm; and
- Y2: oysters begin at ~60mm / ~2-3/8-inch / with a dry tissue weight ~0.5g.

To provide a comprehensive review of a range of long-term, full-scale programs, eight different scenarios for implementation using two different management approaches are presented in Section 9. One management approach grows oysters through the Town's municipal propagation program, and the other establishes a private aquaculture license site (grant) and allows a grower to carry out the program. The footprint over the growing season and economics associated with these different scenarios are also provided in Section 9.

The four scenarios that could be run as part of the Town's municipal propagation program involve:

- Growing Y1 oysters and selling them as intermediate seed to commercial growers the following spring;
- Growing Y1 oysters and removing them from Lonnie's Pond after a year of growth;
- Growing Y2 oysters and removing them from Lonnie's Pond after a year of growth; and
- Maintaining an ongoing population of Y2 or older oysters inside Lonnie's Pond.

The four scenarios that could be run by a commercial aquaculture business involve:

- Growing Y1 oysters in Lonnie's Pond and selling them the following spring as intermediate seed to other commercial growers operating outside Lonnie's Pond;
- Growing Y1 oysters in Lonnie's Pond and obtaining a grant site outside Lonnie's Pond to grow out these oysters over the second growing season;
- Obtaining intermediate seed, growing it as Y2 oysters in Lonnie's Pond and selling these oysters at the end of the growing season; and
- Growing both Y1 and Y2 seed in Lonnie's Pond concurrently, and optimizing this grow-out for a maximum Y2 population that will be taken to market at the end of the growing season.

For the Town propagation program that involves overwintering the oysters and selling them as intermediate seed at the start of their second growing season, the town will generate over \$67 in revenues for each kilogram of nitrogen that is removed. This is a cost of less than zero dollars per kilogram of nitrogen removed as long as the sale price is \$0.139 per oyster for this intermediate seed. The critical task in this scenario is to establish a pathway for the sale of intermediate seed to private growers. This may involve the Town obtaining permission to sell directly to growers, or may involve partnering with a seed supplier such as Aquaculture Research Corporation (ARC). The cost per kilogram of nitrogen removed for a Town propagation program that involves disposing of the oysters after one growing season is expected to be about \$341 for Y1 oysters or \$411 for Y2 oysters. Maintaining an oyster population older than Y2 is projected to cost over \$600/kg N and is unable to achieve MEP annual nitrogen removal targets due to the limited area available for placing floating gear. Detailed costs for all four options are provided in Section 9.

If the Town opens Lonnie's Pond to a commercial grower, then the expense associated with the removal of nitrogen would be limited to administrative oversight of the private grower and is estimated to be on the order of \$11 per kilogram of nitrogen. In this scenario, the Town would not need to expand its workforce or facilities to accommodate the activities associated with growing and managing oysters. It is expected that a commercial grower could cover their costs at a price for intermediate seed of \$0.173 per oyster. The labor rate and other expenses of a private business are higher than for the Town, and the price point for privately-grown intermediate seed is therefore higher than for intermediate seed that is grown by the Town. If the grower starts with 2 mm seed in Lonnie's Pond and secures a location for growing the second-year seed outside of Lonnie's Pond, the price for market size oysters would need to be \$0.366 each to cover costs. Detailed costs for all four options are provided in Section 9.

All commercial options assume a financed investment in all new equipment to support a new business, and the employment of insured, skilled labor at a rate of \$25/hour including benefits (paid vacation and sick time) and full health insurance. A threshold consideration for the commercial grower approach is whether an aquaculture license site (also known as a grant) could be permitted in Lonnie's Pond and whether a commercial propagation permit would be granted for this location. Key permitting considerations include granting of this site for aquaculture at the local level and the determination of bottom condition. If bottom conditions are found to be productive in this section of Lonnie's Pond, a rotational system that moves the one-acre growing area within Lonnie's Pond each year could be employed so that no one area is permanently removed from the public resource. Part of the work plan for the second year of this demonstration is to begin this permitting process in order to evaluate whether this option is permissible.

Seven of the above scenarios meet TMDL and MEP annual targets for Lonnie's Pond. The Town-managed option of maintaining an ongoing population of older oysters inside Lonnie's Pond does not meet the nitrogen-removal target due to the space requirements for the floating bags needed to hold these larger oysters. Section 9 also discusses options for using these larger oysters outside Lonnie's Pond to help test the feasibility of establishing long-term oyster beds in areas with suitably hard sediment types.

The first year of the demonstration project confirmed that a full-scale project should be able to meet the MEP annual nitrogen removal target. The second year of this demonstration is needed to monitor the performance of a scaled-up system. There are several key parameters related to full-scale implementation that will be evaluated during the second year of the demonstration, including:

- Nitrogen-removal rates through growth and denitrification as a function of time to ensure that TMDL requirements can be met during the critical impairment period of July and August;
- Suitable growth rates across the full project area with the required stocking densities;
- Potential of quahogs to contribute to meeting TMDL and MEP annual nitrogen removal targets;
- Stakeholder perspectives on a larger deployment; and
- Marketability of overwintered Y1 oysters.

The purpose of the third year of the demonstration is to transition to an ongoing full scale program that is operated either by the Town or by a commercial grower, with monitoring by SMAST to be continued in order to meet MassDEP and US EPA requirements.

The details of the second-year demonstration program are presented in Section 10. This second year of the three-year demonstration project involves deploying a roughly half scale system of 280,000 Y2 oysters and 950,000 Y1 oysters distributed among four 500 bag plots, each plot being similar in size and shape to what would be used in the full scale implementation. The purpose of each plot is to monitor the time dependence of nitrogen removal rates via uptake, biodeposition, and denitrification for the following cases:

- Plot A: 140,000 Y2 oysters at an initial stocking density of approximately 280 oysters per bag, adding biodeposits on top of the same area used by last year's site;
- Plot B: 60,000 Y2-L oysters (grown in Lonnie's in 2016) at an initial stocking density of approximately 150 oysters per bag and 28,000 Y2 oysters at an initial stocking density of approximately 280 oysters per bag, over deeper water and softer bottom than last year's site;
- Plot C: 590,000 Y1 oysters at a stocking density of approximately 1,000 oysters per bag, over bottom similar to that used by last year's site;
- Plot D: 360,000 Y1 oysters at a stocking density of 600 oysters per bag over deeper water and softer bottom than last year's site; and
- Plot Q: 100,000 15 to 20 mm quahogs at a suitable location to be determined.

This scale of demonstrations for year two will provide evidence for achievable rates of nitrogen removal through uptake during oyster growth as well as nitrogen removal through enhanced denitrification. Several aspects of denitrification will be measured, including multi-season rates as well as differences between Y1 and Y2 oysters. Other impacts to sediment quality will also be measured. Installing this size oyster field in the second year will also will give the community an opportunity to preview the visual and operational impacts of a full-scale program.

Discussions during the first year of the demonstration project have raised interest in evaluating the ability of quahogs to contribute to achieving nitrogen removal targets for Lonnie's Pond. The second year of this demonstration project includes evaluating quahogs for nitrogen-removal and sediment improvements. An initial population of 100,000 quahogs will be placed in a suitable location and the critical parameters of growth rates, mortality, and nitrogen content will be assessed throughout the 2017 growing season.

1. Overall Purpose and Rationale for Shellfish Demonstrations

A. Overall Purpose

The overall purpose of the Town's shellfish demonstration projects is to monitor the nitrogen-removal impacts of both *Crassostrea virginica* (oysters) and *Mercenaria mercenaria* (hard clams) and utilize these measured results to develop full-scale plans for shellfish cultivation that help meet regulatory standards for nitrogen. The Town must achieve specific, quantitative goals for removing nitrogen within each of its estuaries to meet the Total Maximum Daily Load (TMDL) standards. The design of a full-scale shellfish project for a particular waterbody to meet a prescribed nitrogen-removal target must be based on certain site-specific values, such as total annual growth in shellfish biomass and enhanced denitrification rates. The size and spatial configuration of a full-scale project are directly related to the values measured through these demonstrations.

Demonstrations are designed to:

- Evaluate the efficacy of oysters and quahogs in achieving reduced nitrogen concentrations within the Town's impaired waters;
- Determine the most advantageous approaches for growing the quantities of shellfish prescribed to meet nitrogen removal goals; and
- Develop realistic cost estimates for the preferred approaches to growing shellfish to meet nitrogen removal goals in specific waterbodies.

These demonstrations will help determine the role of shellfish in the overall strategy for reducing the nitrogen loads within the Town's impaired estuaries as was presented in the Town's ACWMP (2017).

B. Rationale for Use of Oysters

Orleans is pursuing oyster cultivation as the first demonstrations because many scientific papers published in peer-reviewed journals demonstrate the nitrogen uptake and water quality improvements caused by oyster cultivation. (Bricker 2015; Carmichael et al. 2004; Higgins et al. 2011; Kellogg et al. 2013, 2014; Nelson et al. 2004; Porter et al. 2004).

Oysters feed by filtering algae and other particles that contain nitrogen out of the water column. Through this filter-feeding process, oysters both improve water clarity and impact nitrogen concentrations (Newell et al. 2002, 2004, 2005; Officer 1982). The four main pathways by which oysters interact with the mass of nitrogen in an estuary are:

- Uptake into shell and soft tissue;
- Packaging of particles into feces and pseudofeces (biodeposits), which sink to the estuary bottom;
- Excretion of inorganic nitrogen; and
- Enhancement of sediment denitrification.

It is important to remember that all of the nitrogen that is sequestered in the body of an oyster, as well as the nitrogen contained in biodeposits and excretions, comes originally from the water column. Following the principle of the conservation of mass, oysters do not contribute new nitrogen, but instead both sequester and reformulate the nitrogen already contained in an ecosystem. Biodeposition and excretion of inorganic nitrogen does not add any new nitrogen to the water column. The nitrogen was already there.

Removing oysters that have grown in the water column directly removes a mass of nitrogen that was previously in the water. This nitrogen-removal value can be measured directly by weighing the shell and soft tissue and applying a measured value for the percent nitrogen contained therein.

As oysters filter nitrogen-containing particles out of the water column, some of this nitrogen is reformulated into feces and pseudofeces (biodeposits). While feces and pseudofeces technically remove nitrogen from the water column, these biodeposits do not remove nitrogen from the system because these deposits become part of the sediment. The pathway by which additional nitrogen is removed that relates to biodeposition is called denitrification. Feces are the by-products of metabolized particles, while pseudofeces are particles that are not ingested or metabolized by an oyster. These particles are collected on the oyster's gills and coated in mucus. Biodeposits are heavier than water and rapidly sink to the sediment, where the organic nitrogen that was contained in the original particles is buried. Biodeposition is proportional to the weight of an oyster as well as the temperature of the system and the total suspended solids in the water column (Powell et al., 1992; Sisson et al, 2011). The long-term fate of the nitrogen in these biodeposits is difficult to assess, and will vary depending on the bottom chemistry and sediment type. At this time, it is not possible to state conclusively how much nitrogen is permanently removed from the water column by biodeposition. Therefore, it is assumed that there is no long-term removal of nitrogen from the estuary by biodeposition alone. The pathway by which additional nitrogen is removed from the estuary that relates to biodeposition is called denitrification.

Biodeposits introduce materials to the bottom sediment that can stimulate additional, permanent removal of nitrogen from these sediments in form of nitrogen gas, effectively removing it from the estuarine ecosystem permanently. Nitrogen removal within benthic sediment is a process driven by microbes that either produce nitrates (nitrifying bacteria) or metabolize nitrates (denitrifying bacteria). First, bacteria that prefer oxygen-rich environments produce NO_3 (nitrates) as one metabolic by-product. Then, bacteria that prefer oxygen-depleted environments metabolize nitrates, using the oxygen and releasing the nitrogen as a gas. Denitrification within the sediment can be increased by oyster biodeposits that feed a population of these bacteria. This biological process is also used in advanced septic systems and Permeable Reactive Barriers to reduce the total concentration of nitrogen that is in groundwater, and which ultimately flows into the Town's estuaries.

Inorganic nitrogen (primarily ammonium) is excreted by the oysters to the water column, where it is typically incorporated in organic matter, some of which becomes food for organisms including oysters. Oysters have not imported this nitrogen into the water column, they have simply taken it from one organic material already in the water column to another organic material in the water column. When the nitrogen contained in ammonium excreted by oysters returns to another organic material in the water column, there has been no net change in the ecosystem from a nitrogen balance perspective.

The Cape Cod Cooperative Extension conducted an extensive study on the nitrogen content of both oysters and quahogs (Reitsma, Murphy and Franklin 2014). To accomplish this research, oysters and quahogs were collected throughout Cape Cod and the nitrogen content was analyzed. This study documented the mass of nitrogen sequestered in the shell and soft tissue of market size oysters. The average size of the animals involved in the study was approximately 3.2-inch/2.3-ounce (84mm/66g). Key findings include:

- The nitrogen content is typically 0.21 percent of the shell dry weight and 7.95 percent of the tissue dry weight per adult oyster grown in off-bottom gear on Cape Cod. These values are consistent with those reported from the Chesapeake at 0.17 percent of the shell dry weight and 7.28 percent of the tissue dry weight per adult oyster (Higgins et al. 2011);
- The average nitrogen content of market size oysters grown in off-bottom gear on Cape Cod was approximately 0.42 percent of their total live weight. For a 3.2-inch (84mm) oyster weighing 2.3 ounce (66 g), this would equal 0.01 ounce (0.282g);
- The average nitrogen content in the soft tissue of market size oysters grown in off-bottom gear in Pleasant Bay was approximately 0.49 percent of their live weight. For a 3.1-inch (79mm) oyster weighing 2.1 ounce (60 g) wet, this would be 0.01 ounce (0.3g);

- The nitrogen densities of oysters and quahogs is similar, but because adult oysters are larger and heavier than littleneck sized quahogs (average shell length 2.2-inch [56.1mm], 31.2g shell weight and 2.22g dry tissue weight), removing a single oyster will extract more nitrogen than removing a single littleneck sized quahog;
- Both oysters and quahogs have a higher nitrogen density in the fall, partly because the mass of the soft tissue at this time of year is a larger fraction of the animal's total weight; and
- The nitrogen content of oysters is impacted by the type of growing system used, which primarily affects shell thickness. Wild oysters and oysters grown on the bottom had higher nitrogen content than cultured oysters grown off the bottom.

While the amount of nitrogen sequestered in the shell and tissue of adult oysters is reasonably consistent, rates of enhanced sediment denitrification vary widely and are highly site-specific (Kellogg et al. 2013). In some locations, denitrification is minimally increased by oysters (Higgins et al. 2013). In other studies, denitrification is significantly increased (Humphries et al. 2016; Kellogg et al. 2013). Some studies have shown that the nitrogen removed by the increase in denitrification caused by oysters is equal to the mass of nitrogen contained in the oyster (Newell et al. 2005; Kellogg et al. 2013). Sediment chemistry and dissolved oxygen concentration at the sediment surface, as well as overall oyster biomass density are key factors that impact the likelihood that oysters will enhance denitrification (Burkholder et al. 2011).

There is a strong scientific basis for using oyster cultivation to decrease water column nitrogen concentration and improve water clarity. Demonstration projects focusing on oysters were seen as an important first step in order to validate the quantities of nitrogen removed through uptake in the body of the oyster and enhanced denitrification in local waters. These projects provide the field-verified basis for including oyster cultivation in the Town's wastewater plans.

C. Quahogs for Water Quality Improvements

Quahogs also uptake nitrogen (Reitsma, Murphy and Franklin 2014), and have been shown to modestly enhance denitrification rates (Nizzoli et al. 2006). As part of the second year of the Lonnie's Pond demonstration project, quahogs are being included to evaluate growth rates as well as the effect of bottom-planting quahogs on water and sediment quality. In addition, a separate demonstration project is currently in process for Town Cove which is focused on enhancing municipal propagation of quahogs. A full discussion of the impacts of quahogs on water and sediment quality will be prepared as part of the Technical Memorandum describing enhanced quahog propagation demonstration in Town Cove. This Technical Memorandum is scheduled for completion after the quahog survey is completed by SMAST, where they will use local harvesters to accomplish the survey with oversight from SMAST staff.

There are several reasons why quahogs were not selected for the first year of the Lonnie's Pond demonstration project, but are included in the second year of the demonstration:

- Oysters are an important species commercially and aquaculture leaseholders in Pleasant Bay are mainly growing oysters, so this species needs to be evaluated for its nitrogen-removal ability;
- Quahogs grow more slowly than oysters, so the water quality impacts would not be as easily measured in the first year of a demonstration project;
- Lonnie's Pond is a good experimental site for measuring the impact of oyster aquaculture on both water quality and sediment denitrification rates;
- The Department of Environmental Protection must approve shellfish as part of the Town's Amended Comprehensive Wastewater Management Plan (ACWMP). The size, quantity and survival of oysters grown in gear can be directly measured. From a regulatory perspective, this enables consistent and repeatable implementation of oyster biomass to meet water quality goals. Quahogs are bottom-planted and buried, and are known to move, making a demonstration more difficult to monitor and evaluate;

- Quahogs have a smaller mass of sequestered nitrogen per animal than oysters at harvestable size;
- The effects of quahog propagation have not been studied to the extent of oysters in terms of their impact on water and sediment quality. The science of oyster interactions in eutrophic systems has been well-characterized; and
- Town Cove is a focus area for municipal propagation and commercial and recreational harvest of quahogs, therefore a quahog demonstration project is more appropriately being planned for this area.

Based on the findings of these projects, both oysters and quahogs could become a cost-effective part of the solution for reducing the nitrogen that is polluting the Town's estuaries.

2. Specific Purpose of the Lonnie's Pond Oyster Aquaculture Demonstration Project (Lonnie's Pond demonstration)

The first year of this three-year demonstration was designed to confirm the suitability of Lonnie's Pond for growing oysters, and provide preliminary estimates of the amount of nitrogen that can be removed by both uptake during oyster growth as well as enhanced denitrification.

The first year of the Lonnie's Pond demonstration was designed to:

- Quantify the total oyster biomass needed in Lonnie's Pond to fully achieve water quality goals. To make this determination, several parameters were monitored and measured:
 - Sediment denitrification enhancement attributable to oysters in Lonnie's Pond;
 - Growth of oysters in Lonnie's pond (grams/season);
 - Nitrogen content in the shell and soft tissue of oysters that reach harvestable size;
 - Water quality changes due to filter feeding by introduced oysters; and
 - Oyster impacts on other sediment and benthic processes.
- Develop and test a system for growing oysters that optimizes the use of space and addresses the known predation and soft sediment issues in Lonnie's Pond;
- Develop and test a system for overwintering oysters that addresses the known predation and soft sediment issues in Lonnie's Pond;
- Evaluate costs associated with oyster aquaculture at this site; and
- Assess use conflicts.

One of the most important reasons for the first year of the Lonnie's Pond demonstration was to determine whether oysters will increase ambient sediment denitrification rates. Because of the site-specific nature of denitrification, this parameter must be measured directly in Lonnie's Pond. Based on published studies (Humphries et al. 2016; Kellogg et al. 2013, Newell et al. 2005), it was believed that denitrification may reduce by half the actual quantity of oysters needed to meet the regulatory requirements for nitrogen-removal in Lonnie's Pond. If denitrification can reduce the overall biomass of oysters being grown annually, the size of the growing area, as well as the scale and costs of the long-term program are significantly reduced.

During the first year of the Lonnie's Pond demonstration, the size and density of oysters installed was specified to allow denitrification enhancement that is attributable to oysters to be measured. The data on denitrification are essential to accurately calculate the minimum biomass of oysters needed for full-scale implementation that will achieve the nitrogen reduction target for Lonnie's Pond. Denitrification and water quality monitoring results are discussed in the SMAST technical report (Howes et al. 2017). These monitoring results are summarized in Section 8.

A practical and cost-effective long-term program for Lonnie's Pond also needs to be based on actual growth and mortality rates observed at the site. Section 5 includes a detailed discussion of oyster growth. Nitrogen uptake as well as biodeposition rates that enhance denitrification are directly related to oyster dry tissue weight. For different starting size oysters, the amount of growth in terms of weight over a season required quantification. Like denitrification rates, the amount of biomass added over a growing season and nitrogen-content of oysters are site-specific. It was also expected that localized changes in water quality parameters such as turbidity and particulate organic nitrogen concentrations would be measurable. These effects also impact the sizing of full-scale implementation.

Field-verification of implementation logistics and costs of oyster aquaculture *for the purposes of nitrogen-removal* was also evaluated during the first year of this demonstration. The actual time needed for operations and maintenance as well as for overwintering were monitored. A specialized system needed to be developed if the oysters were to be overwintered in Lonnie's Pond. Equipment was designed and installed so that the feasibility of this design could be tested. Keeping oysters over several growing seasons is very different from the approach used in private aquaculture. Commercial growers usually keep first-year oysters for grow-out to select size in the second growing season or mobilize early to sell petite oysters after the first year of growth.

The first-year project in Lonnie's Pond also enabled neighbor reactions to be reviewed. This field-demonstration allowed people to become familiar with the details of oyster cultivation. Stakeholders experienced the visual and other impacts of growing oysters at this location firsthand, so their perspectives come from actual experiences.

In sum, the first year of the Lonnie's Pond demonstration was intended to provide site-specific data for key parameters of a long-term program, such as:

- Increase in oyster biomass and nitrogen uptake associated with this growth;
- Oyster-enhanced denitrification rates;
- Costs and feasibility of overwintering; and
- Stakeholder perspectives.

The projections for both the long-term implementation strategy as well as the second-year of the demonstration program are based on the findings of this first year. Eight different scenarios for full-scale implementation using two different management approaches are presented in Section 9. One management approach grows oysters through the Town's municipal propagation program, and the other establishes a private aquaculture license site (grant) and allows a grower to carry out the program. Verifying key components of these long-term implementation strategies guides the work proposed for the second year of the demonstration. The proposed plan for the second year of the Lonnie's Pond demonstration is presented in Section 10.

The purpose of the second year of the demonstration is to:

- Assess nitrogen removal rates through growth and denitrification as a function of time to ensure that TMDL requirements can be met;
- Confirm that suitable growth rates are achieved across the full project area with the required stocking densities;
- Evaluate the potential of quahogs to contribute to meeting TMDL and MEP annual nitrogen removal targets;
- Assess stakeholder perspectives on a larger deployment; and
- Validate potential for revenues from overwintered Y1 oysters.

The purpose of the third year of the demonstration is to transition to an ongoing full scale program that is operated either by the Town or by a commercial grower.

It is important to remember that the Department of Environmental Protection (MassDEP) has stated that three years of data are needed to fully quantify the extent to which oysters can make a measurable difference in water quality parameters for regulatory purposes. MassDEP must approve shellfish cultivation as part of the Town's Amended Comprehensive Wastewater Management Plan (ACWMP). The three-year Lonnie's Pond demonstration will provide the data needed to support the use of shellfish within the Town's ACWMP.

Although nitrogen removal rates from oyster cultivation is site-specific, the results from Lonnie's Pond are expected to be applicable to other impaired sections of Pleasant Bay because the conditions found there are similar to other areas such as Meetinghouse Pond, The River, Arey's Pond, Namequoit River and Paw Wah Pond.

3. Background: Planning the Lonnie's Pond Oyster Aquaculture Demonstration Project

A. Selection of Lonnie's Pond as the Demonstration Location

Lonnie's Pond was selected as the first demonstration site using a three-phase process. The first phase of site selection involved a detailed analysis of seven sites that were originally presented during the Town-sponsored June 2015 Shellfish Forum where scientists, engineers, growers and regulators met to review the shellfish component of the Orleans Consensus Agreement. Review of these seven sites was accomplished by the AECOM Technical Team that included representatives from AECOM, Science Wares, Biomimicry New England/UMass Boston, and Beach Point Oysters.

To facilitate a systematic and objective evaluation of each of the potential demonstration sites, a decision support tool, called a Site Selection Matrix was developed. This Site Selection Matrix includes a number of criteria for Site Suitability, Permitting, and Project Evaluation. These criteria were first presented as part of the process of developing the Orleans Consensus Plan. The Shellfish Technical Team refined the criteria after reviewing site-specific data to include the following:

- 1) Site Suitability
 - Available Growing Area/Adequacy of Acreage;
 - Water Quality Indicators;
 - Disease/Predation;
 - Ease of Access;
 - Aesthetic Impacts;
 - Representativeness of the Site (Transferability);
 - Use Conflicts; and
 - Ability to Colocate with other Non-Traditional Technologies.
- 2) Permitting
 - Abutter Compatibility;
 - Wild Harvest Conflicts (DMF); and
 - Grow-Out to Harvest Size Allowed (DMF).
- 3) Permittability
 - Project Evaluation;
 - Expected Survival; and
 - Overall Likelihood of Monitoring Plan to Yield Quantified Results.

Site Suitability criteria address the environmental, land use and implementation characteristics of each proposed demonstration location. Permitting criteria assess the regulatory issues related to each proposed demonstration location. Project evaluation criteria estimate the likelihood of obtaining meaningful results from a proposed demonstration site. Other/Overriding Considerations refer to any threshold issue that precludes a demonstration at a given site. The results of the first phase analysis for demonstration site selection are documented in the Technical Memorandum on Final Site Characterization and Evaluation for Aquaculture/Shellfish Propagation (evaluation criteria and ranking) dated March 13, 2016 and is available on the Town's website.

The second phase of site selection began with a peer review of the Site Characterization Technical Memorandum, involving review and comments from several outside experts including:

- Diane Murphy, Barnstable County Cooperative Extension;
- Josh Reitsma, Barnstable County Cooperative Extension;
- Sandy MacFarlane, former Orleans Shellfish Constable;
- Henry Lind, former Eastham Shellfish Constable;
- Chatham Shellfish Propagation Department; and
- Dave Slack, Orleans oyster grower.

Written comments from these outside experts and responses from the Shellfish Technical Team are included in Appendix A of the Technical Memorandum. After this detailed peer review of the Site Selection Technical Memorandum, the third phase of site selection included discussion of potential sites with staff from SMAST and the Orleans Shellfish Working Group (SWG). The SWG consists of the Shellfish Constable/Harbormaster and representatives from the Shellfish and Waterways Advisory Committee, Orleans Marine and Freshwater Quality Task Force, Orleans Pond Coalition, Citizens Peer Review Committee, and Orleans Water Alliance. The SWG recommended that Lonnie's Pond be re-evaluated for the first shellfish demonstration location when floating constructed wetlands were no longer being considered as an option for 2016. Lonnie's Pond was then reassessed for a shellfish demonstration project. The technical review of Lonnie's Pond included:

- Studying the information on measured tidal exchange and benthic conditions that are presented in the Massachusetts Estuaries Project Report for Pleasant Bay (Howes et al. 2006) and reviewing annual water quality data sets provided by SMAST;
- Evaluating the report from Cape Cod Cooperative Extension (Clark 2007) documenting a project in Lonnie's Pond where remote set oysters was grown and bottom planted; and
- Discussing suitability and monitoring of Lonnie's Pond for an oyster demonstration with SMAST staff.

Lonnie's Pond was found to be the most suitable for purposes of a demonstration project because growing conditions are favorable and the site's configuration is the most likely to result in meaningful monitoring results for both water quality and sediment denitrification. In terms of tidal exchange, the local residence time is 1.1 days, meaning that the entire water volume moves out of Lonnie's in a little over one day. Table 1 shows relevant water quality data provided annually to the Town by SMAST indicating suitability of Lonnie's Pond for oyster aquaculture. Averages computed from 2000-2014 samples analyzed for SMAST Sample ID PBA-15S.

Specific site characteristics that aid in monitoring success include the ease of access, the distinctive and measurable hydrological inputs and outputs, the overall shallow pond depths that are like other areas within Little Pleasant Bay, and the potential lack of user conflict.

Table 1 - Water Quality Data from Lonnie's Pond (Station PBA-15, Surface)

| Parameter | Minimum Requirement | Lonnie's Pond Average Condition |
|-------------------------------------|---------------------|---------------------------------|
| Temperature (°C) | 0 | 23.5 ± 2.4 |
| Salinity (ppt) | 20 | 28.9 ± 1.8 |
| Dissolved Oxygen - DO (mg/L) | 4 | 5.1 ± 0.9 |
| Particulate Organic Nitrogen (ug/L) | 2 | 10.4 ± 3.8 |
| Chlorophyl a (ug/L) | 2 | 6.4 ± 4.5 |

Key reasons for selecting Lonnie's Pond as the first demonstration location were:

- Water quality is most degraded in terminal ponds, so a method of introducing non-traditional technologies in these areas is needed; Lonnie's Pond is one of the most degraded terminal ponds;
- Ample tidal flushing and exchange;
- Adequate food supply for growing oysters;
- Area is available for both demonstration and full scale implementation;
- Sediment type is expected to be conducive to denitrification;
- Ability to monitor inputs from the channel and herring run effectively;
- Ability to monitor impacts of oysters effectively; and
- Replicability to other sites (other terminal ponds are impaired and will also require floating gear due to soft bottom conditions).

Through this three-phase process, Lonnie's Pond was determined to be the best location to demonstrate the nitrogen-removing benefits of oyster propagation. Documentation for the Lonnie's Pond site evaluation is contained in both the Technical Memorandum on Shellfish Cultivation – Preliminary Engineering Design and Work Plan for Preferred Site(s) dated May 4, 2016 and the Technical Memorandum for Site Characterization and Evaluation for Floating Constructed Wetlands dated May 25, 2016, both of which are available on the Town's website.

B. Design of Lonnie's Pond Demonstration

The Lonnie's Pond demonstration was designed to meet two key project goals:

- Ability to monitor water and sediment impacts from oysters; and
- Ability to replicate growing system in other impaired waters.

Two possible field locations and a design for the Lonnie's Pond demonstration is detailed in the Technical Memorandum on Shellfish Cultivation - Preliminary Engineering Design and Work Plan for Preferred Site(s) dated May 4, 2016. This design was finalized by a technical team with expertise in engineering, oyster aquaculture and estuary science. This review occurred by:

- AECOM Shellfish Technical Team;
- SMAST; and
- Shellfish Working Group.

To select the final location within Lonnie's Pond and finalize the layout for the demonstration, the Technical Team, Shellfish Working Group and SMAST reviewed pond circulation data that was collected in June 2016 using an Acoustic Doppler Current Profiler (ADCP). These data showed that the incoming tide enters the pond and water fans out evenly across the pond area. Since the results of the SMAST analysis indicated that circulation patterns were not a limiting factor in locating the oyster field, the southern end of Lonnie's Pond was selected because this location was more advantageous in terms of access for operating and maintaining the field and visibility for patrolling. In addition, the northern end of Lonnie's Pond was identified as a preferred area for wild harvesting of quahogs. Siting the oyster field in the southern end of the pond ensured that quahog harvesting in the northern section of Lonnie's Pond would not be affected by this demonstration project.

1) Choice of Floating Gear

The process used to determine the choice of growing system and determine the layout of the demonstration included detailed review of current practices used for oyster farming on Cape Cod as well as consultation with: local growers, regional suppliers of shellfish gear, and the Cape Cod Cooperative Extension. After considering the specific attributes of the Lonnie's Pond location as well as the monitoring and replicability goals of the project, floating bags were determined to be the best choice for gear.

Growing oysters in gear-based systems has several advantages, including:

- Protection from predators;
- Ability to farm areas where the sediment is soft and deep; and
- Creation of a contained oyster population that can be readily measured.

Floating bags are commonly used by private aquaculture operations because they have been proven to allow oysters to grow quickly with high survival rates and uniform shape. Additional advantages of floating bags include the high density of oysters that can be grown in a given area relative to other systems, the low-profile aesthetics of floating bags and the ability to maintain a field in a way that bottom sediment is undisturbed (important during the demonstration phase when denitrification is being measured).

Floating gear also addresses two significant factors in Pleasant Bay and Town Cove: predation and muck. Pleasant Bay has a significant population of oyster drills (*Urosalpinx cinerea*), a virulent predator. A significant population of oyster drills negatively impacted a 2006 through 2007 project in Lonnie's Pond where oyster remote set was grown in gear for one season and then was bottom-planted. The results of this project were documented in a report for the Cape Cod Cooperative Extension (Clark, 2007). The design of the current demonstration builds on the findings of this early project. In addition, growers in Little Pleasant Bay regularly encounter drills in their overwintered oysters. Floating bags are an effective system for protecting oysters from drills. Many areas within Pleasant Bay, including the terminal ponds (Lonnie's, Areys, Meetinghouse and PawWah) have fine-grained, soft sediment that experience periods of low dissolved oxygen, which precludes bottom-planting and installing trays located on the bottom. Floating bags provide a practical means of keeping oysters off this mucky bottom.

Oyster aquaculture in gear also creates a controlled and repeatable system for introducing, maintaining and measuring the amount of shellfish in a specific location. This consistency in implementation is important as the Town seeks to use shellfish in the context of regulatory compliance with the Total Maximum Daily Load (TMDL) requirements for nitrogen in its impaired waters. Regulatory approval is required if the Town includes shellfish as part of implementing its ACWMP. Gear-based oyster aquaculture creates a growing approach that is more likely to meet with regulatory approval because it can be duplicated, monitored and evaluated effectively.

The use of floating bags for growing oysters that is being demonstrated in Lonnie's Pond has wide applicability for other waterbodies in Orleans.

2) Choice of Second Year Oysters

The goal of the first year of the Lonnie’s Pond demonstration was to monitor the impacts of oysters on sediment denitrification and water column nitrogen concentrations. The purpose of quantifying these parameters was to help in determining the biomass of oysters needed to fully remove the nitrogen reduction target for Lonnie’s Pond. Therefore, a key consideration for the design of the first-year demonstration was to facilitate the assessment of two pathways for nitrogen removal.

The first pathway is through uptake in the shell and tissue of oysters. Once the oysters are removed, the nitrogen incorporated into oyster growth leaves the system. This pathway can be measured directly by tracking the change in biomass of oysters in the field over the growing season. The total increase in oyster biomass over a growing season is directly related to the total amount of nitrogen they sequester. The reported value for the nitrogen content of oysters cultured off-bottom in Pleasant Bay averages 10.9% of dry tissue weight (Reitsma, Murphy and Franklin 2014, Reitsma et al. 2017).

The second pathway involves removal of nitrogen by sediment denitrification. Because the existing sediment already cycles nitrogen, the challenge is to assess the extent to which oysters increase the denitrification pathway. For a given site, the effect of oysters on the rate of denitrification depends on several factors including sediment chemistry and organic matter content as well as dissolved oxygen concentrations. In order to measure enhanced denitrification caused by oysters, an appropriate amount of feces and pseudofeces must be deposited to the sediment. It was expected that a larger mass of biodeposition would have a more measurable effect on denitrification. The mass of biodeposits is proportional to the weight of the oysters as well as the temperature of the system and the concentration of total suspended solids in the water column (Powell et al., 1992; Sisson et al, 2011). The Virginia Institute of Marine Science developed a model for the Army Corp of Engineers (Sisson et al. 2011) that suggests the biodeposition rate of oysters (BD) can be modeled as follows:

$$BD = \alpha * T * TSS^\beta * e^{-\delta * TSS} \text{ mg per gram dry tissue per hour, where}$$

TSS is the total suspended solids in mg/L

T is temperature is in degrees C.

TSS is the total suspended solids in mg/L

T is temperature is in degrees C.

α = a parameter that determines peak biodeposition rate proportional to temperature

β = a parameter that determines both peak biodeposition rate and the position of the peak as a positive function of seston concentration

δ = a parameter that determines both peak biodeposition rate and the position of the peak as an inverse function of seston concentration.

The parameters α , β , δ as well as TSS and T are characteristic of the system being modeled and provide an estimate of the expected biodeposition rate as a function of the tissue mass of the oysters in the field.

This model accounts for three notable features of biodeposition rates observed from studies cited in Sisson’s publication:

- A threshold effect of low seston concentration upon filtration (seston are the minute materials moving in water including both living and nonliving matter);
- A clogging effect of high seston concentration upon filtration; and
- A positive correlation between filtration and temperature.

Biodeposition is proportional to the dry tissue weight. Therefore to maximize the amount of biodeposition that takes place for a given volume of gear deployed, there is a clear benefit to deploying oysters with a large initial dry tissue weight. It is possible to obtain either first or second year seed at the beginning of the season. First year seed (Y1) can be purchased as small or medium, starting at sizes of approximately 3mm or 12mm respectively but have a dry tissue weight of only a few or tens of milligrams each. Second year seed (Y2) is considered an intermediate size of approximately 65mm and would typically have a dry tissue weight of 0.5g. Figure 1 shows projected dry tissue weights for typical Y1 and Y2 oysters leading up to and including the critical impairment period of July and August.

The values in Figure 1 can be combined with Sisson’s biodeposition model (Sisson et al, 2011) to predict the mass of feces and pseudofeces deposited as the oysters grow as a function of oyster dry weight. As shown in Figure 2, the Y2 oysters are expected to produce a significantly greater accumulation of biodeposits, even at lower stocking densities per bag. During the critical impairment period, approximately 5.8-times more biodeposits are deposited by Y2 oysters than what would have been accumulated if Y1 oysters were to have been deployed. Note that the exact amounts of biodeposition will depend on the values of α , β , δ used in the model, but for a wide range of values that have been used to model actual conditions, the trend and magnitude of the Y2/Y1 ratio remains very close to what is shown below.

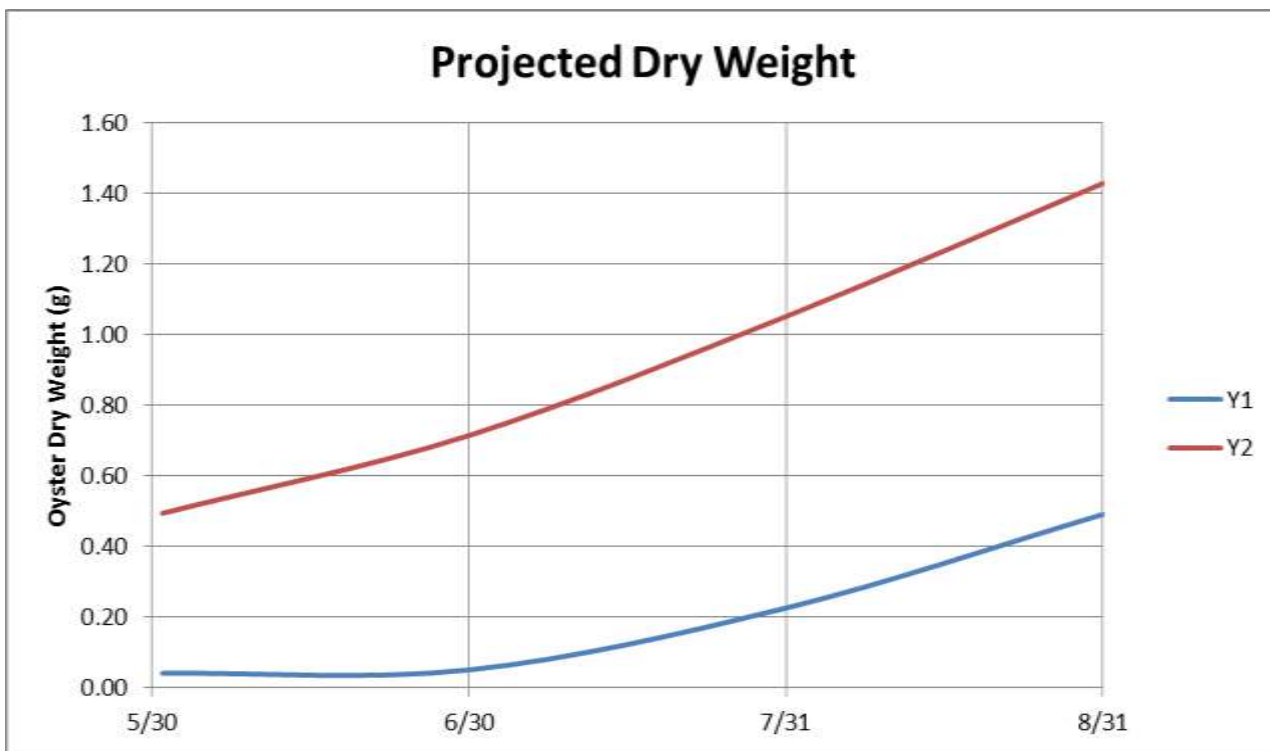


Figure 1 - Projected Dry Weight Starting from either Year 1 or Year 2 Oysters

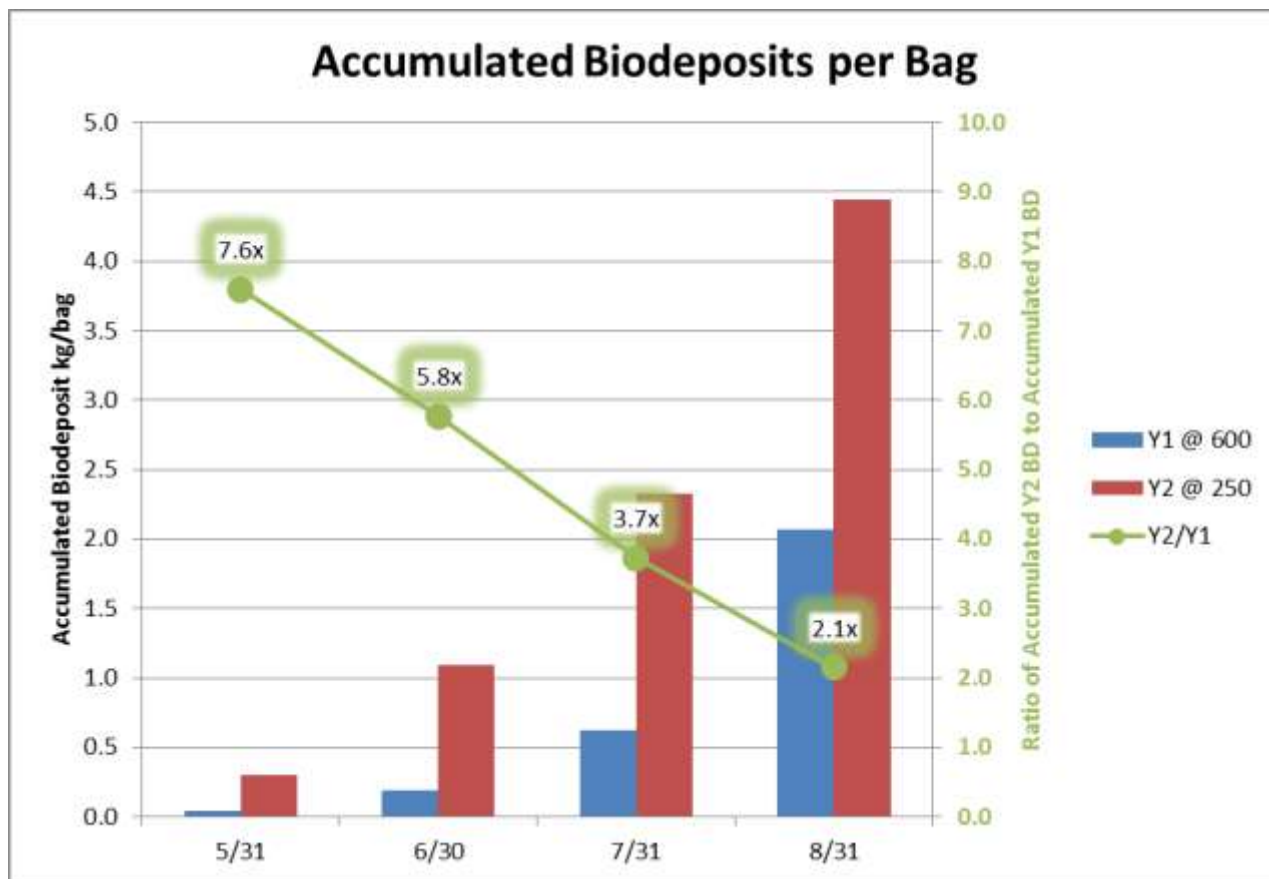


Figure 2 - Comparison of Accumulated Biodeposits for First Year (Y1) and Second Year (Y2) Oysters

3) Choice of Field Configuration

Proper design of the actual growing area is important for monitoring any enhancement to sediment denitrification caused by oyster aquaculture. The field was designed in consultation with SMAST, an organization whose scientists have decades of experience monitoring the benthic flux of nitrogen, and which has monitored oyster-enhanced sediment denitrification for several shellfish demonstration projects. The oyster field was deployed as a rectangle of densely-packed floating bags to maximize the ability to measure enhanced denitrification rates under the floating bags. The field was also designed to allow operation and maintenance to occur without disturbing the sediment or monitoring equipment. Consequently all field maintenance activities were performed from boats so the bottom was not disturbed.

4. Installation Details

A. Permitting and Ongoing Public Information for Lonnie’s Pond Demonstration

The permitting process for the Lonnie’s Pond demonstration included two steps: a modification to the Town’s Municipal Propagation Permit through the Division of Marine Fisheries (DMF) and a Conservation Commission Request for Determination of Applicability (RDA) with abutter notification. At the request of the Shellfish Constable, DMF included the Lonnie’s Pond demonstration in the Town’s propagation permit. A map showing the proposed demonstration location as well as a description of the shellfish being grown was submitted for this permit modification. Signs closing the project area to the harvest of oysters were also posted by the Orleans Shellfish Constable at the request of DMF. This species-specific closure allowed quahogs to continue to be harvested near this area while the demonstration occurred.

The standard RDA application form from MassDEP entitled WPA-1 was submitted to the Conservation Commission, and abutters were notified pursuant to local regulations. A public hearing was held on June 21, 2016 where several abutters commented on the project. Key concerns were the visual and navigation impacts of the project and the long-term plan for the installation. After a robust discussion, most abutters were supportive of the first year of the demonstration because of the value of the research being done. The RDA was approved by granting a “negative determination”, which means that the project could move forward without filing a Notice of Intent. The conditions of this approval included removing the floating bags by December 31, 2016 and providing a project update during a Conservation Commission meeting in January, 2017. Submerging the oysters in Lonnie’s Pond as an overwintering strategy was also approved as part of the RDA approval. In addition to the abutter notification that was required as part of the RDA hearing process, an ongoing effort was made to keep the community informed about this demonstration.

As part of continued public outreach and education, the following occurred:

- Attendance at the Friends of Lonnie’s Pond Annual Meeting to present details of demonstration project;
- Information flyer posted below the parking lot located near the project;
- Project updates sent approximately every two weeks by email to a broad stakeholder group, including Friends of Lonnie’s Pond. Six updates were sent from July to early October with a final update sent after the overwintering was completed in mid-December;
- Newspaper articles describing key events such as volunteer bag building day, oyster installation in Lonnie’s Pond, project operation and maintenance and overwintering;
- Monthly Shellfish Working Group meetings; and
- Two presentations at Lonnie’s Pond in September as part of the Orleans Pond Coalition event entitled “Celebrate our Waters”.

Overall, there was positive stakeholder support for this demonstration. Residents of Orleans are eager to learn the extent to which shellfish can contribute to water quality improvements and regulatory compliance with nitrogen TMDLs in Orleans. This demonstration is seen as an effective approach for characterizing the effect of oysters on the nitrogen concentrations in the water column.

B. Details of Field Installation

The first step in deploying oysters in the field was building the floating bags and long line system that kept the bags in place. Clips were attached at regular intervals along the line and the floating bags were attached to these clips. The floating bags consisted of several component parts that were purchased separately and then assembled, including the bags themselves, floats, ties, a PVC slider closure, and rope. The bags were punched on a jig and hog rings were used to attach rope to the bags through the punched holes. Two volunteer days were held (June 4, 2016 and June 17, 2016) so community members could get first-hand experience with the bag assembly process. Eight people came from the community on the first day, and four came on the second day. Paid staff and unpaid members of the shellfish technical team also worked on these volunteer days, and paid staff completed assembly of all 800 bags over several additional days of work. The long line system was assembled exclusively by paid staff.

On June 22, 2016, the installation of oysters in Lonnie’s Pond began by setting a series of augers and attaching the long lines. Floating bags were then clipped to the long line at regular intervals. As shown in Figure 3, the demonstration layout included 800 bags in an 80’ x 120’ field. Floating bags were installed in 8 strings that were kept in place using 16 augers (one auger on each end of each set of long lines). The strings were spaced approximately 10 feet apart. Approximately 250 oysters were installed per floating bag. This was accomplished by counting 250 oysters into a measuring vessel and then using this volume to fill subsequent bags. Figure 4 shows the team filling the floating bags with oysters.



Figure 3 - Layout of Lonnie’s Demonstration (Year One)



Figure 4 - Installing Oysters in Floating Bags (Year One)

Two sources of seed were used in Lonnie’s Pond. Second-year seed that had been overwintered was purchased from the Town of Falmouth. Approximately 126,690 2-inch and 11,700 1-inch animals (for a total of 138,390) were available. The goal for the demonstration was 200,000 oysters and therefore an additional 60,000 oysters that were almost 1-inch were purchased from Cape Cod Oyster. Both batches of seed were delivered to the site via refrigerated truck (Figure 5), and installed the same day as delivery. The 138,000 oysters from Falmouth were distributed among 560 bags and the 60,000 oysters from Cape Cod Oyster were distributed among the remaining bags and were installed in the field on June 22, 2016 and June 27, 2016, respectively.



Figure 5 - One batch of oysters in the refrigerator truck

5. Measuring Oyster Growth

A. Data Collection Methodologies

Over the project period, seven floating bags at the locations shown in Figure 6 were monitored regularly for growth rates. The entire field was evaluated for mortality during each session when the bags were maintained.

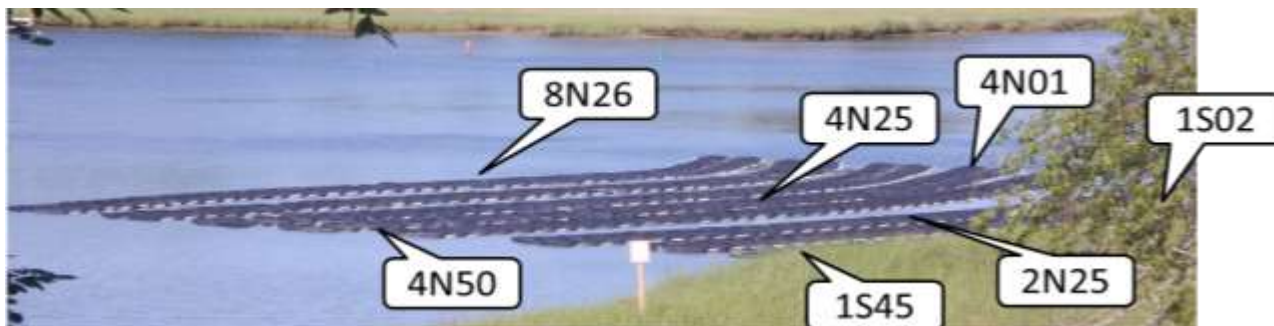


Figure 6 - Locations of the Floating Bags Monitored for Growth and Mortality

On each sampling day, 25 to 30 oysters were randomly selected from each tracking bag. The oysters were transported from the bags to shore in labeled sampling buckets. On shore, the oysters were lightly scrubbed to remove surface fouling and 25 were placed on a scaled mat and photographed. The images were loaded into a custom LabView application developed for this project that allowed each oyster to be measured individually. The user interface for this program is shown in Figure 7. The photographed oysters were then weighed using a SmartWeigh scale with a 2kg capacity and 0.1g accuracy. Normally, the total weight of the 25 oysters was recorded so that an average could be calculated. Individual oysters were weighed to validate averages. An example of this data is shown in Figure 8. The volume occupied by oysters as they grew was determined by placing 30 oysters in a cylindrical container, agitating them briefly to allow them to settle, and lowering a gauge plate until it contacted the top of the oysters. The level of the plate was recorded so the volume occupied inside the cylindrical container could be calculated. Figure 9 shows staff performing the growth measurements.



Figure 7 - Custom LabView Program for Measuring Oyster Length

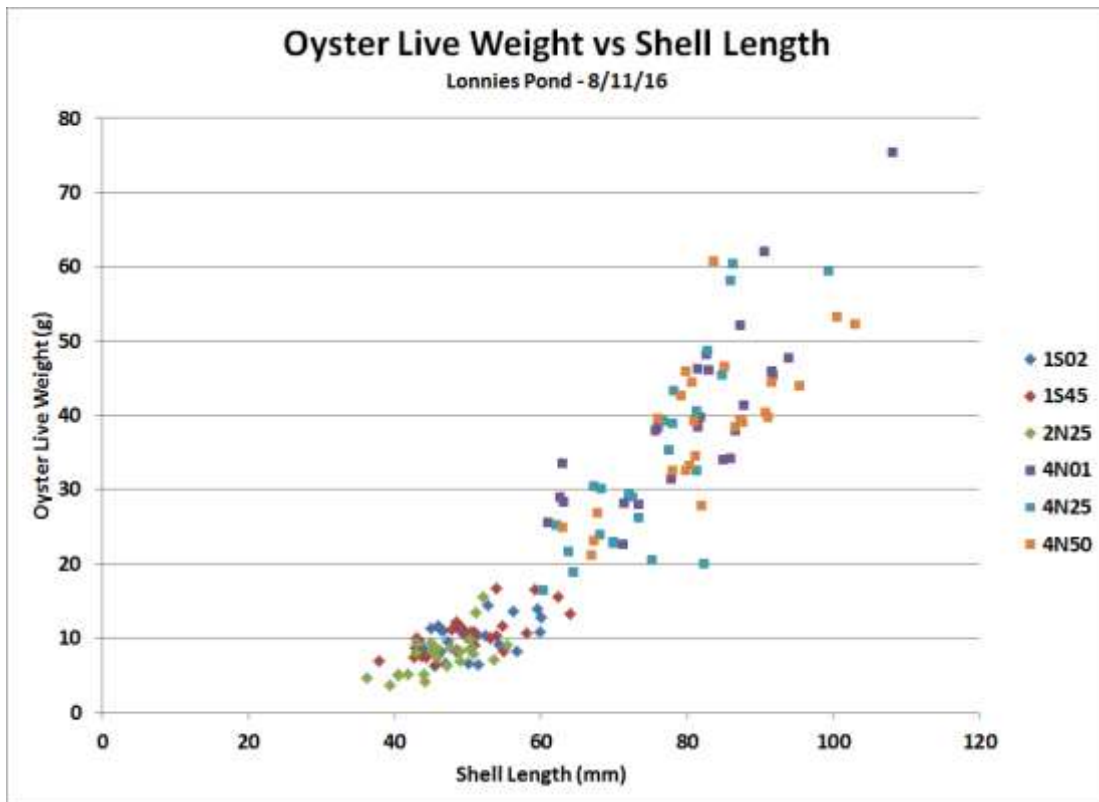


Figure 8 - Oyster Live Weight and Shell Length for One Sampling Event



Figure 9 - Photodocumentation of field measurements (weight and length) being taken

Mortality was monitored visually and audibly in each bag during maintenance operations. The shell of a dead oyster opens within a few days, and once the oysters get above approximately 50 mm, a single shell makes a distinctive rattle when the bag is flipped. The seven sampling bags were also inspected for mortality each time oysters were withdrawn for measurements, and dead shells were inspected, counted, and removed. No mortality was noticed by any of these methods until mid-September, when an occasional dead oyster was noticed in the tracking bags. From this point forward, mortality counts were made from additional representative bags during every other bag flip cycle. The final mortality assessment was made by counting live and dead oysters in four previously uncounted bags for each population class (four Y1 and four Y2), and the overall final mortality rate was established at 6.6 percent.

B. Presentation of Data on Growth, Mortality and Nitrogen Content

Figure 10 shows the data for size and weight measurements taken over the course of the season, demonstrating that the oysters grew well. The first-year oysters finished at an average length of about 74mm (2.9-inches) and an average weight of 35 g (1.23 oz.). The second-year oysters finished at an average length of about 94 mm and an average weight of about 69 g (2.4 oz.). The distribution of sizes is shown in Figure 11, and demonstrates that approximately eighty percent of the first-year oysters reached either petite (64 mm/2.5-inches) or regular market size (76 mm/3-inches) in one shortened growing season. A typical season would begin in May, not late June. All of the second-year oysters had reached petite or full market size by the end of their second growing season. From discussions with wholesalers, it is believed that the Y1 oysters will have a significantly higher market value if they are overwintered, and it is expected that many of them would be market-ready within the first few weeks of the next season.

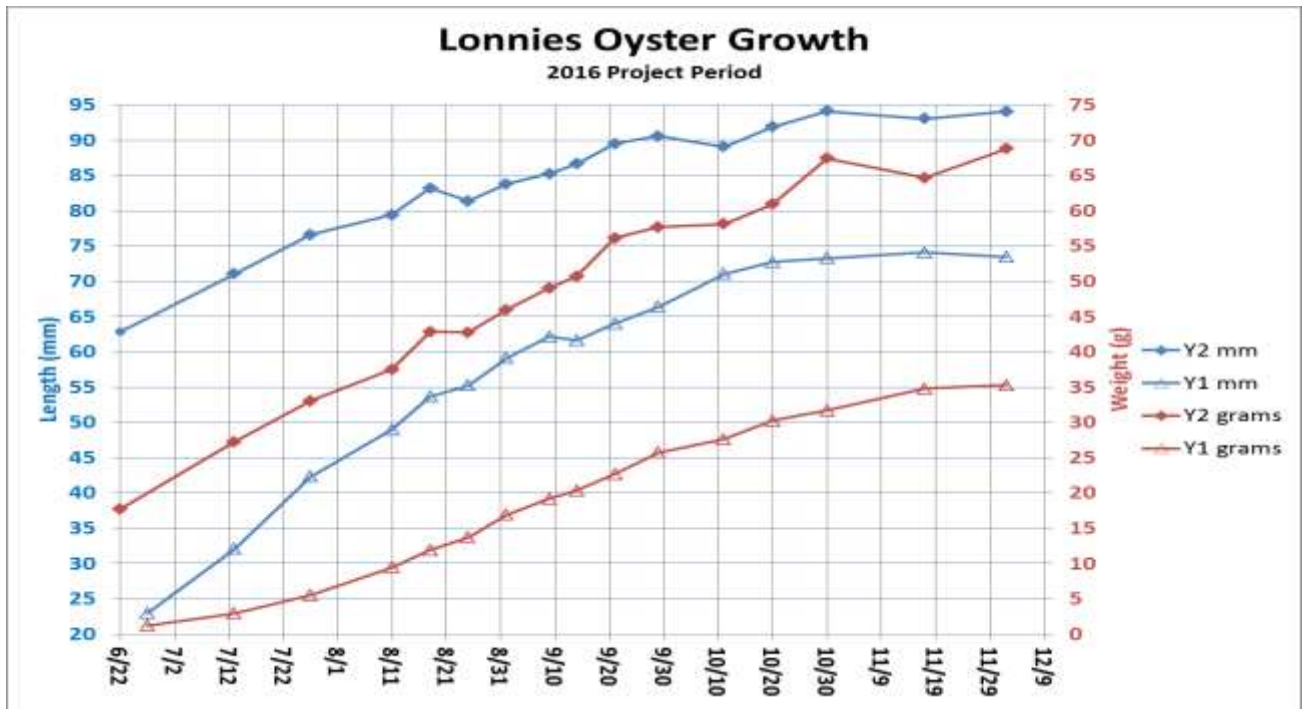


Figure 10 - Size and Weight Measurements for Lonnie's Pond Oysters

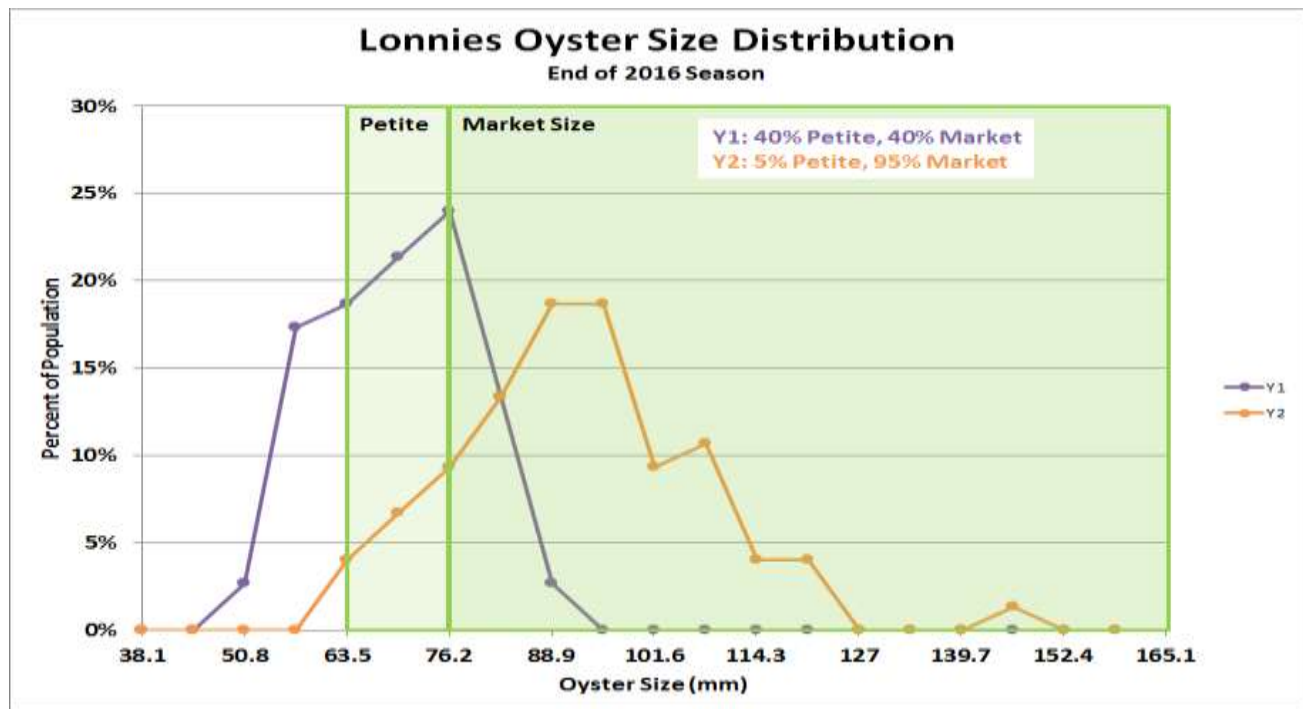


Figure 11 - Histogram of Size and Weight Distribution for Lonnie's Pond Oysters

Figure 12 shows both the increase in total oyster biomass over the growing season as well as the amount of nitrogen sequestered in the shells and tissues of these oysters. As shown in Figure 12, the live weight of the oysters increased from approximately 2 metric tons at the beginning of the project on June 22, 2016 to approximately 10 metric tons at the end of the growing season. This value has been adjusted by the measured mortality of 6.6 percent. This biomass contains approximately 25.9 kg of nitrogen that was removed from the water column during the growing season. This nitrogen-uptake value is calculated using several measured values that are shown in Table 2. The calculated average dry weight for each size class shown in Table 2 was multiplied by the mortality-adjusted population and size-class appropriate nitrogen content (10.3 percent for Y2 and 10.5 percent for Y1) to estimate the total nitrogen removed from the water by the growth of the living oysters. No nitrogen credit was taken for the shell or tissue of dead oysters. This method provided a calculated total of 25.9 kg of nitrogen removed from the water column. The primary significance of this total nitrogen removal value is for comparison with the amount of nitrogen estimated to have been removed by increased denitrification, which was 17.3 kg, or about 68 percent of the amount removed through tissue and shell uptake (Howes et al. 2017).

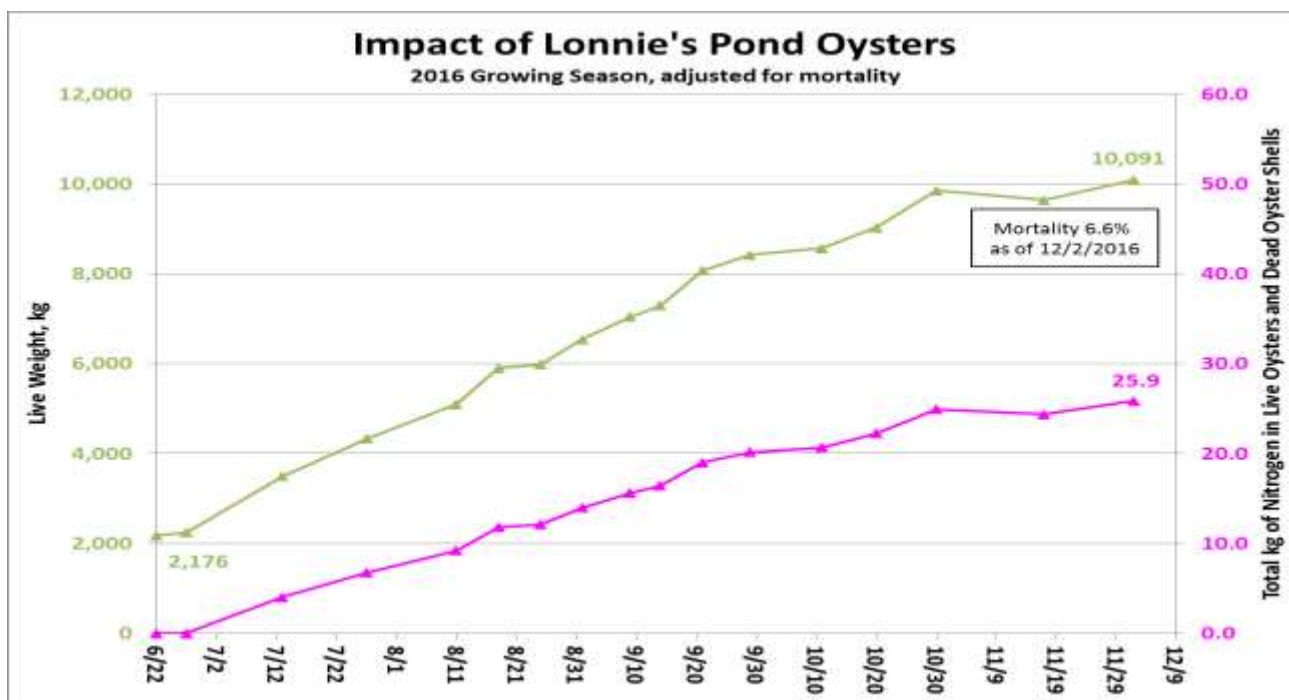


Figure 12 - Total Live Weight and Nitrogen Removed by Oyster during Year 1 of the Lonnie's Demonstration Project

Table 2 - Total Nitrogen Content of Lonnie’s Pond Oysters

| Location | Sample Time | Length (mm) | Whole Weight (g) | Dry Tissue Weight (g) | Total N, Shell and Tissue (g) | N as a percent of Dry Tissue Weight (%) |
|------------------------------|-------------|-------------|------------------|-----------------------|-------------------------------|---|
| Pleasant Bay (other studies) | Spring | 77.8 | 64.9 | 2.31 | 0.29 | 12.6 |
| Pleasant Bay (other studies) | Fall | 80.92 | 54.3 | 2.99 | 0.30 | 10.0 |
| Y2 Lonnie’s Incoming | Spring | 62.9 | 17.73 | 0.66 | 0.0683 | 10.3 |
| Y2 Lonnie’s New Growth | Fall | 100 | 80.4 | 2.49 | 0.257 | 10.3 |
| Y1 Lonnie’s New Growth | Fall | 74.3 | 37.4 | 1.20 | 0.126 | 10.5 |

To determine the values presented in Table 2 for percent content of nitrogen in shell and soft tissue, samples of oysters were sent to the Boston University Stable Isotope Laboratory at the beginning of the demonstration on June 22, 2016, and again after the end of the growing season, on December 19, 2016. As shown in Table 2, analysis of these samples indicates that the total amount of nitrogen in oysters grown in Lonnie’s Pond is 10.3 to 10.5 percent of the dry tissue weight of the oyster, comparable to measured results from other studies in Pleasant Bay (Reitsma, Murphy and Franklin 2014, Kellogg et al. 2014, Reitsma et al. 2016, Grizzle et al. 2016).

The Y2 and Y1 values for new growth in Lonnie’s Pond shown in Table 2 were used to estimate total nitrogen content of the oysters at the end of the growing season. Figure 13 shows the progress of nitrogen uptake over the course of the season. This uptake was scaled according to the measured increase in the harvest weight of the oysters throughout the season. Based on measured results from the first year of this demonstration, first year seed that is grown in Lonnie’s Pond is likely to have a higher dry weight than seed that can be purchased elsewhere. The Y2-L line is an estimate for expected oyster dry weight for first year seed that is started in May in Lonnie’s Pond and then used again in Lonnie’s Pond as the second-year seed. The initial stocking density for these larger Y2-L oysters would be lower than for the smaller intermediate seed obtained from other suppliers, but the active biomass per unit volume of gear will not be effectively different. Net performance for a Y2 optimized system would be equivalent whether larger or smaller intermediate seed is used.

The nitrogen content of oyster tissue over the course of the growing season is slightly different depending on location (Reitsma, Murphy and Franklin 2014, Reitsma et al. 2016). As shown in Table 2, the percent of total nitrogen contained in Lonnie’s Pond oysters are typical for cultured off-bottom oysters. However, the actual value may be different for oysters that are removed from Lonnie’s Pond at different points in the growing season. Note for example the variation in spring versus fall oysters from previous studies of Pleasant Bay oysters reported in Table 2. Nitrogen content for oysters that have been grown and overwintered in Lonnie’s Pond will need to be measured to determine whether there is a significant seasonal variation in the nitrogen content of oysters grown to marketable size in Lonnie’s Pond. Part of the purpose of the second year of the demonstration project is to obtain this information. It is not expected that such variations will have a substantial effect on the overall viability or costs of the program.

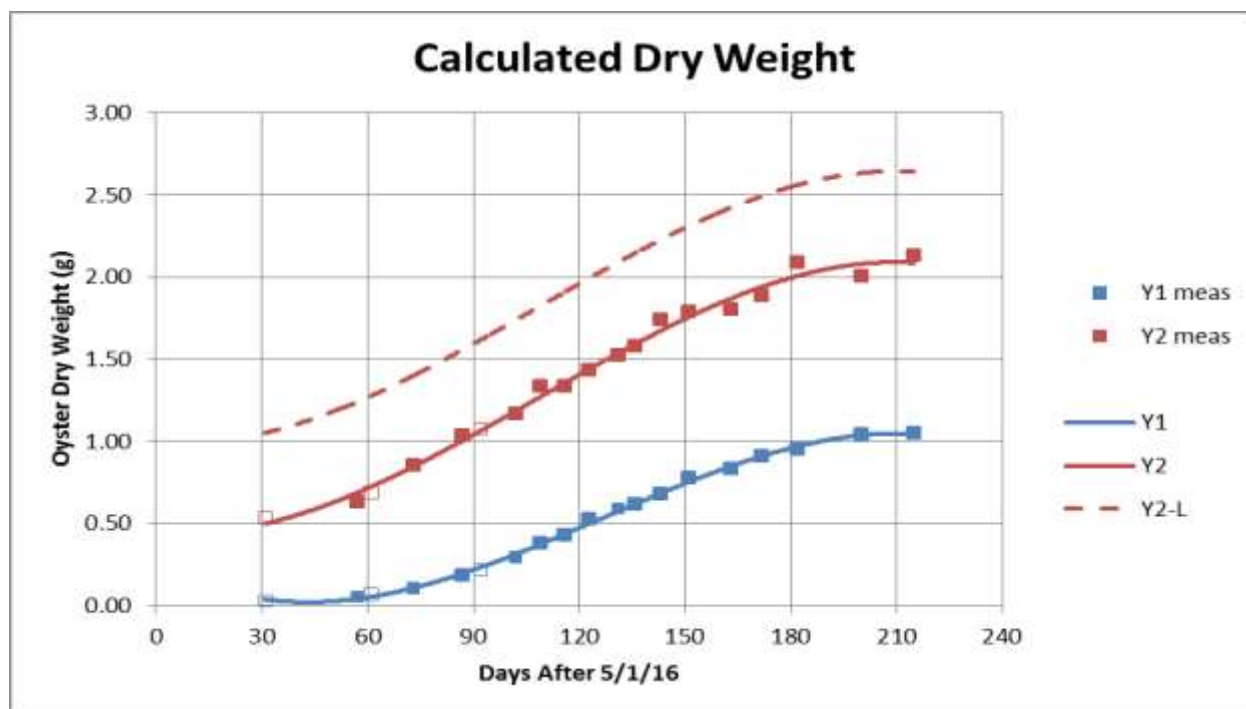


Figure 13 - Calculated Dry Tissue Weight of Oysters Over the Course of the Growing Season

It is not practical or cost effective to measure the size of each oyster or the actual dry weight of the tissue in oysters that are removed over the course of the season. Wet harvest weight is the parameter that is practical to track. To estimate the total nitrogen uptake as a function of wet harvest weight, dry tissue mass is the best predictor of nitrogen content. The relationship between wet harvest weight and dry tissue mass is not strong as shown in Figure 14. As shown in Figure 15, there is typically a strong correlation between dry shell mass and harvest weight. Unlike shell mass, tissue mass may vary over the course of the growing season.

Establishing the relationship between dry tissue weight and harvest weight can be established by plotting the slope of the green line as a function of days after initial oyster installation. This will create a tool for calculating the total nitrogen content of an oyster as a function of its harvest weight at any given time during the growing season. A key objective of the sampling planned for the second year of this demonstration project is to establish this relationship over the growing season for both Y1 and Y2 oysters, so that the nitrogen-removal achieved when harvesting at times earlier than the end of the season can be calculated.

Measurements of the volume occupied by the oysters as they grew are shown in Figure 16. When the number of oysters per liter (inverse of volume) is plotted as a function of harvest weight, it can be seen that the volume occupied increases dramatically as the harvest weight increases. This is a quantitative illustration of the need to 'split' bags as oysters grow. While it is possible to start with a high stocking density of approximately 1,000 oysters per bag, they must be distributed among more bags as they grow. It also highlights an important feature of small oysters: they occupy less space per individual early in the season. Thus when a surface gear installation begins with the deployment of smaller oysters, it will have less of a visual impact in terms of the amount of gear needed on the water in the early stages. The change in the volume requirement of a fixed population of Y1 and Y2 oysters as grown in Lonnie's Pond during the first year of this demonstration project is shown in Figure 17.

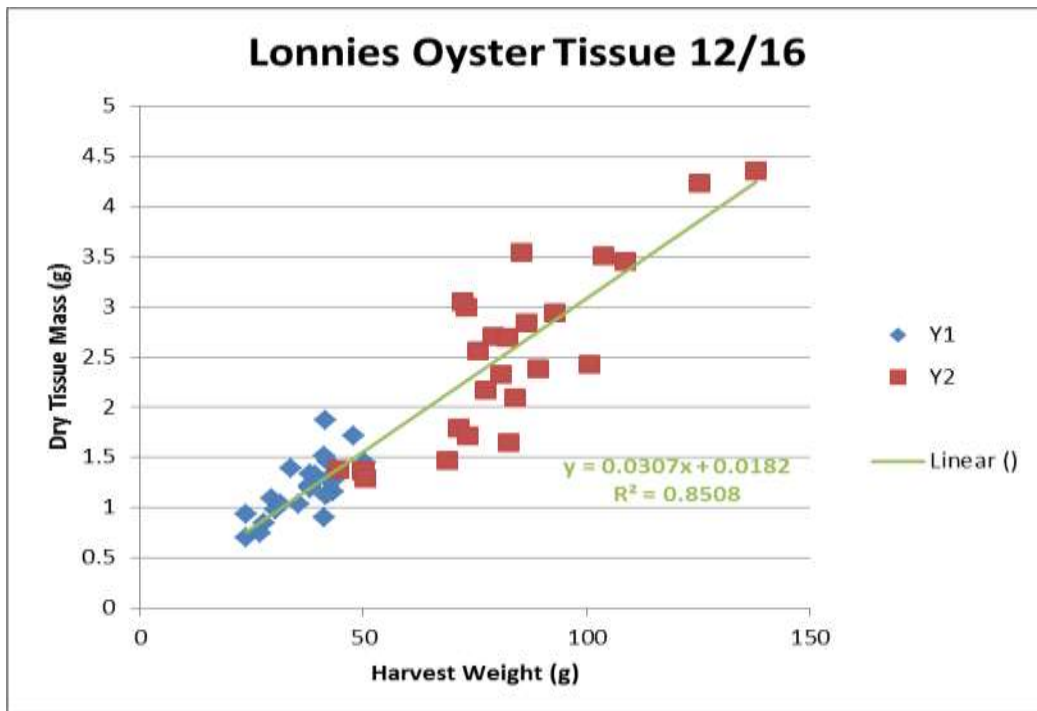


Figure 14 - Relationship Between Dry Tissue Mass to Harvest Weight

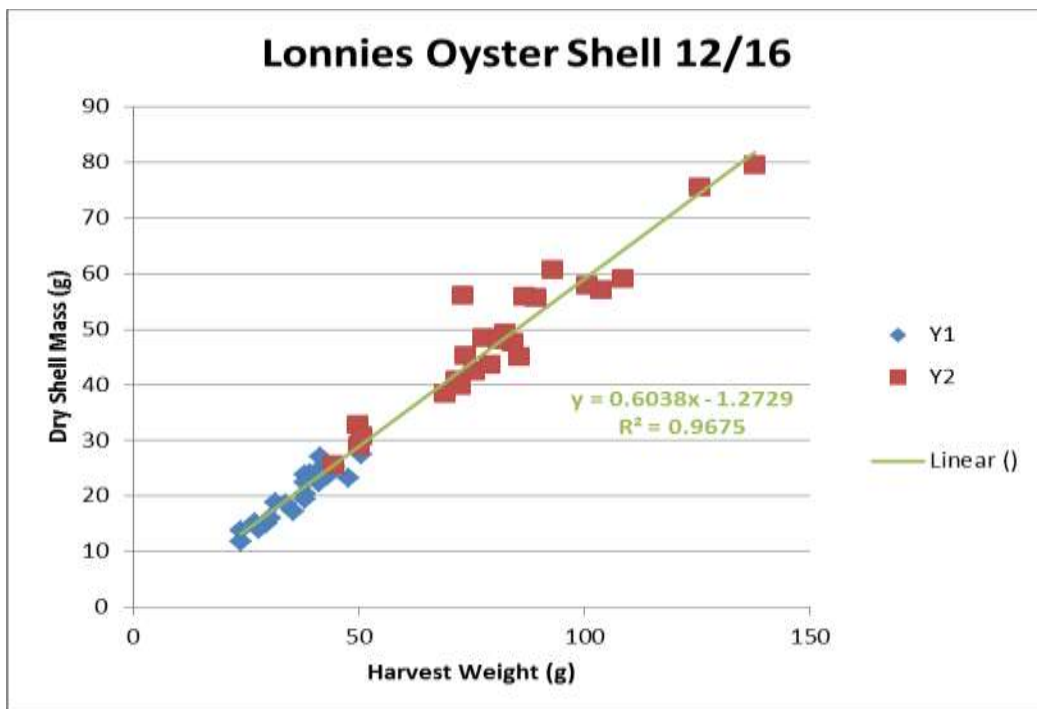


Figure 15 - Relationship Between Dry Shell Mass to Harvest Weight

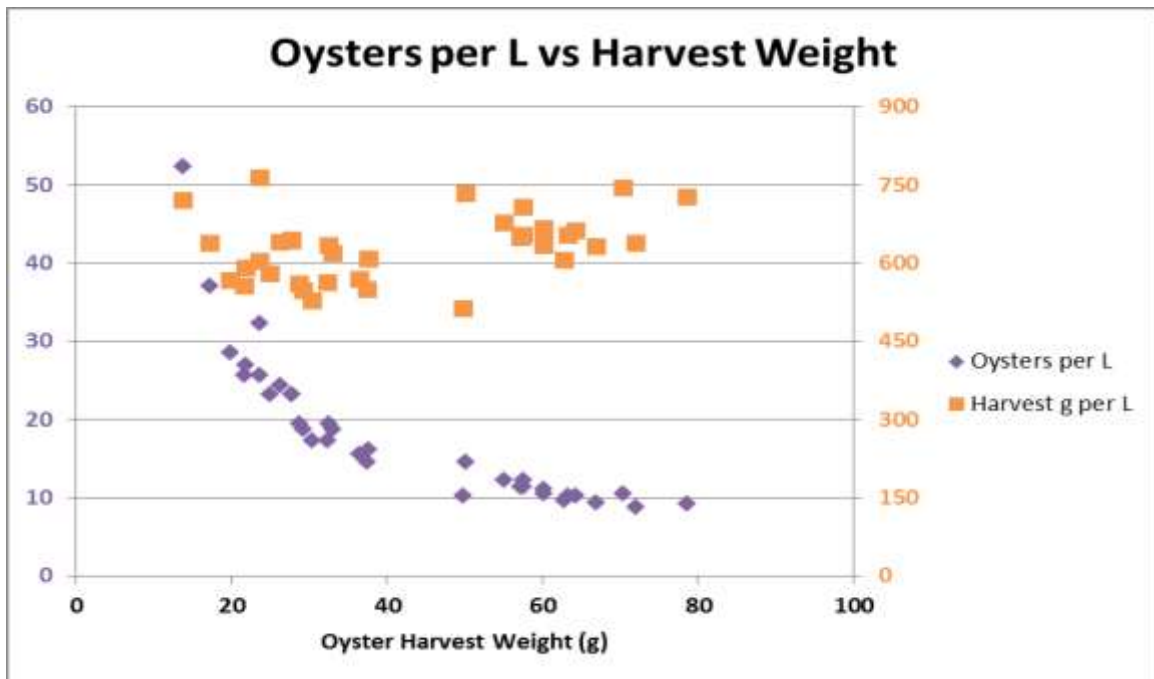


Figure 16 - Number of Oysters per Liter and Harvest Weight per Liter as a function of Harvest Weight for oysters grown in Lonnie's Pond

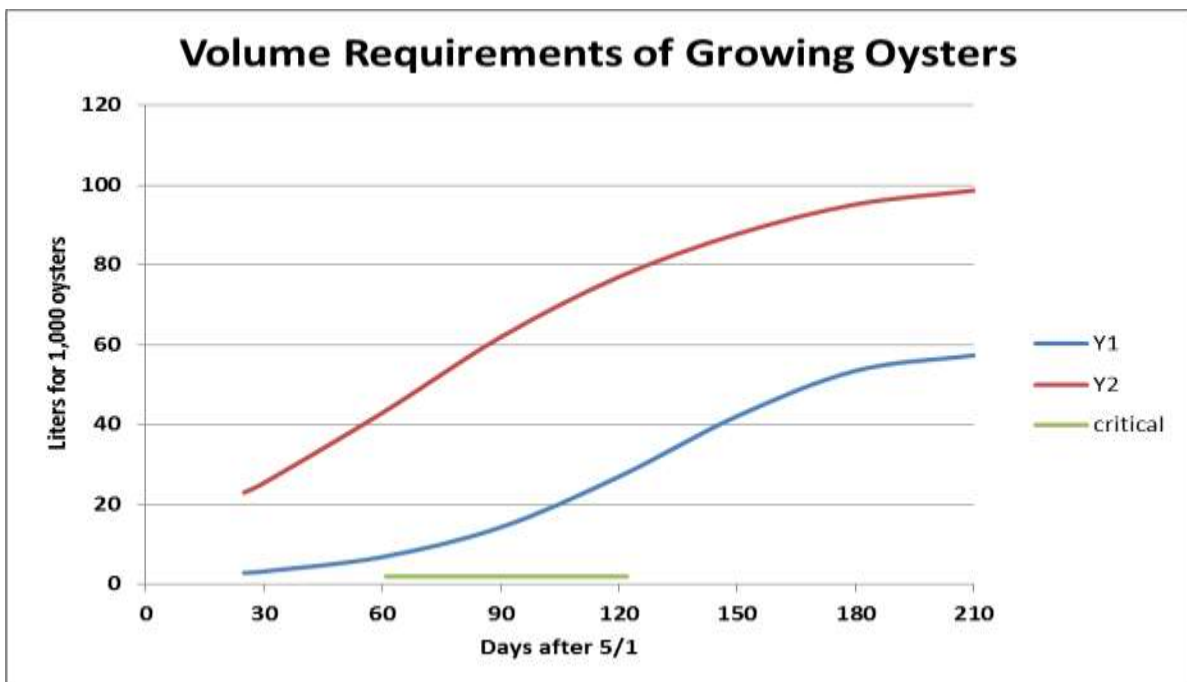


Figure 17 - Number of Liters occupied by Y1 and Y2 oysters over the course of the 2016 growing season

The slopes of the lines shown in Figure 17 represent the rate of increase in the required volume. Some notable features arising from an observation of the change in the slope of these lines over the course of the growing season include:

- Y1 oysters start with a low volume requirement that remains low through the initial part of the growing season, then accelerates quickly after the midpoint of the growing season, with a deceleration towards the end of the growing season; and
- Y2 oysters start with a significant volume requirement which increases through the season, but levels off during the last 30 days or so of the growing season.

The ramification of this difference in volume requirements between Y1 and Y2 oysters is that for a certain end population of oysters, a Y1 system requires fewer bags on the water early in the season and during the critical impairment period. This can result in a lower visual impact from late June to early September, and may be a factor in deciding whether to select a Y1 or Y2 pathway.

6. Operation and Maintenance

To prevent fouling all bags were flipped, which exposes the side previously in the water to air, killing biofouling organisms. Bags were flipped on a schedule that was approximately weekly during the peak impairment period and bi-weekly as the growing season concluded. A key constraint in the operation and maintenance routine was meeting the requirement of no disturbance to the bottom sediment in order for SMAST to accurately determine denitrification rates. This required that the bags be flipped by boat, at high tide. The preferred method of flipping involved two people working simultaneously in a 10-foot rigid inflatable boat or 17-foot whaler. In both cases, one person would work from each side of the boat when passing between lines, and both on the same side when working the outside edges. Another method used a sit-on-top kayak facing perpendicular to the long axis of the kayak, with legs hanging in the water but not touching the bottom. There were several incidents of accelerated biofouling involving tunicates (sea-squirts) and algae during July and August, but nothing that was not sufficiently controlled by flipping the bags once a week.

In addition to reducing biofouling, the activity of flipping the bags helps to keep the oysters from growing together, which is important for marketability. It also achieves some edge trimming that is similar to what is accomplished by running the oysters through a grader. This helps to shape the oyster in a way that makes it more marketable. Flipping the bags also helps extract feces and pseudofeces from the population inside the bag. Some of these materials drop directly to the bottom, but others collect on top of oysters in the bag when they are densely packed. While there was a conscious effort to avoid walking on the bottom to enable a study of the impact of the undisturbed biodeposits on denitrification rates, it is possible that allowing workers to walk on the bottom will not only make the operation and maintenance easier, but may also increase denitrification enhancement as the biodeposits get worked into the sediments via the activity of workers walking on the bottom.

Gear remained in-place all season. Minor repairs were performed as needed on the water, and primarily involved replacing broken zip-ties that held the side floats to some of the bags. On one occasion when there was a risk of a hurricane in the forecast, an additional 10-foot of length was added to the long lines to accommodate a possible storm surge increasing the water level. The storm never arrived, and the extra line length was removed.

Overall the gear performed well. The water level typically changed by several feet each the day. Scope between the end of the middle long line and the auger on each end was sufficient to allow the strings to withstand this range of water level change. On extreme tides, two to four bags located on the ends of the field would occasionally stand up on end, but the oysters would redistribute as the tide went out and the bags laid back down flat. Extended periods of wind and moon cycles could increase or decrease the average water height by about a foot. Regardless of the wind, the surface conditions were calm, and the gear was never at risk of damage due to wind or wave action.

7. Overwintering Details

A. General

By December 23, 2016, all of the Lonnie’s Pond oysters had been submerged for overwintering. This process included customizing a design for the overwintering system, building the system and installation. The design process included detailed review of current practices used for overwintering as well as consultation with numerous experts including:

- Local growers;
- Regional suppliers of shellfish gear;
- East Coast Shellfish Growers Association;
- Maine Cooperative Extension, Barnstable County Cooperative Extension;
- Mook Sea Farms; and
- Canadian grower, Raspberry Point Oysters.

Several prototype systems were designed, built, and tested before the approach was finalized. Key considerations included:

- Keeping oysters from sinking into soft sediment;
- Designing with enough water clearance to avoid ice damage;
- Maintaining enough flow for the cold weather metabolic activity of oysters;
- Controlling mortality from predation; and
- Practicality of installation.

B. Overwintering System Design

As shown in Figure 18, the final system design included a three-part PVC tube frame attached to two plastic pallets. The overall assembly footprint is approximately 50-inches wide, 82-inches long, and 57-inches high. The assembly holds ten floating bags in a vertical orientation at two different levels for a total of twenty bags per assembly. By removing one float from each bag used to grow the oysters, the bag orients vertically in the water as shown in Figure 18, and becomes negatively buoyant. When attached to the frame, the negative buoyancy of the bags combines to pull the assembly to the bottom of the water column. Assuming ice will project a maximum of 1 foot below the surface, the two-level assembly requires a minimum of 6 feet of water at the lowest possible tide. Lonnie’s Pond is at least six feet at low tide where these assemblies are submerged.

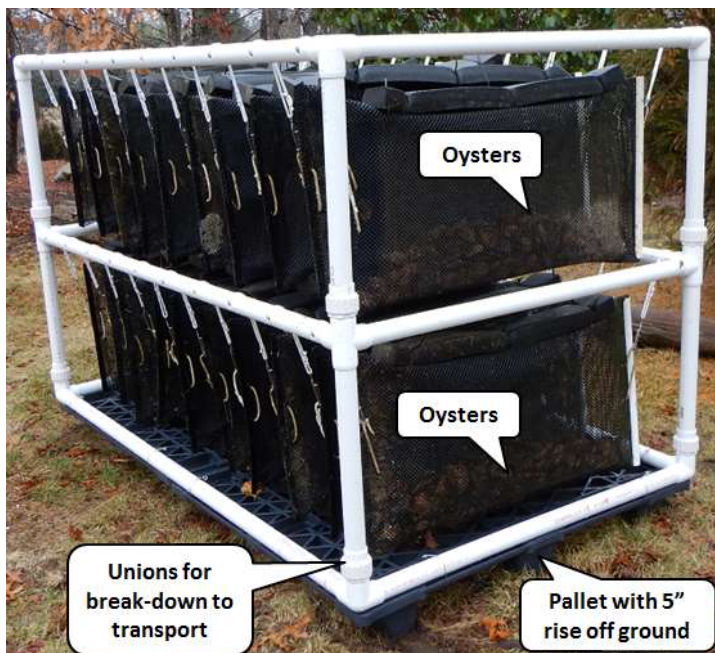


Figure 18 - Overwintering System

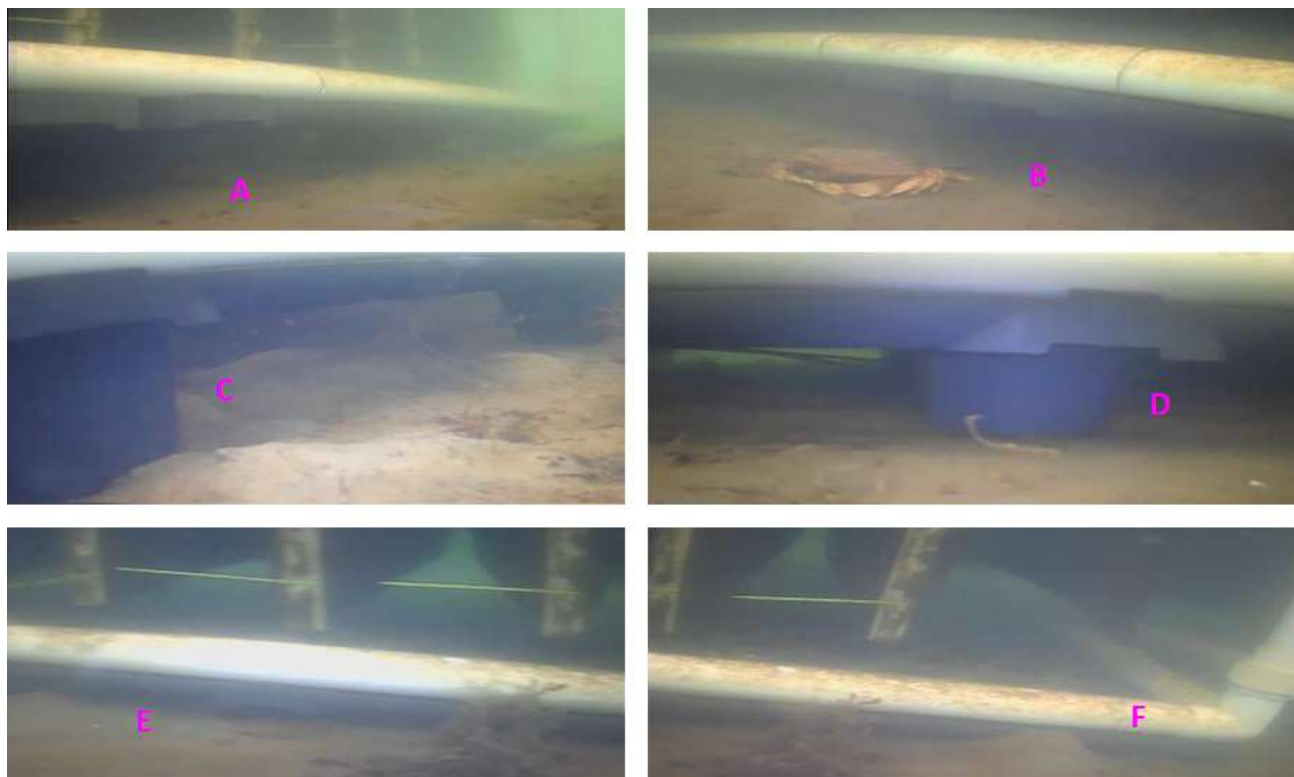


Figure 19 - Underwater image of the assembly showing both levels of bags and pallets resting on the sediment surface

Photo Notes: A and B show the bottom of the plastic pallet clearly above the 'hardest' bottom found in the overwintering area, with details of the feet shown in C and D. The system meets its design objective of keeping the rack above the softest bottom as shown in E and F, which show images taken of the northeastern most racks.

The pallets were specified with wedge shaped feet that prevent the loaded assembly from descending into soft bottom. The total net negative buoyancy of this overwintering system is approximately 100 pounds distributed over nine feet on each of the two pallets. The total initial contact surface area is approximately 100 square inches. This results in a pressure of approximately 1 psi, or approximately 40% of the pressure from the water on the bottom at a depth of 6 feet. As the assembly descends, the wedge-shaped feet increase the contact surface area laterally as well as vertically, so the effective pressure per unit area becomes lower as the assembly sinks, making it more difficult for the assembly to continue descending.

The decks of the pallets provide a contact area of over 1000 square inches, so if the assembly manages to sink lower than three to four inches below the sediment surface, the effective pressure per unit area is reduced to under 0.1 psi which is less than 4 percent of the pressure from the water on the bottom at a depth of 6 feet. As a result of this design, the assembly does not sink into even thick layers of soft sediment, as shown in Figure 19 E and F.

This system made it possible to leave the oysters in the grow-out bags for overwintering. Figure 20 shows a top view of the overwintered bags and a close-up of the oysters from under the water. There are several advantages of this approach. First, although oyster metabolism slows considerably as temperatures drop, they continue to filter. Maintaining some flow is important to survival, even in water that is 0°C. Packing oysters too tightly will also lead to toxicity as oysters continue to filter and purge over the winter. This system maintains water flow across the oysters. It also minimizes the handling of oysters that could damage the shells and lead to higher mortality over the winter.

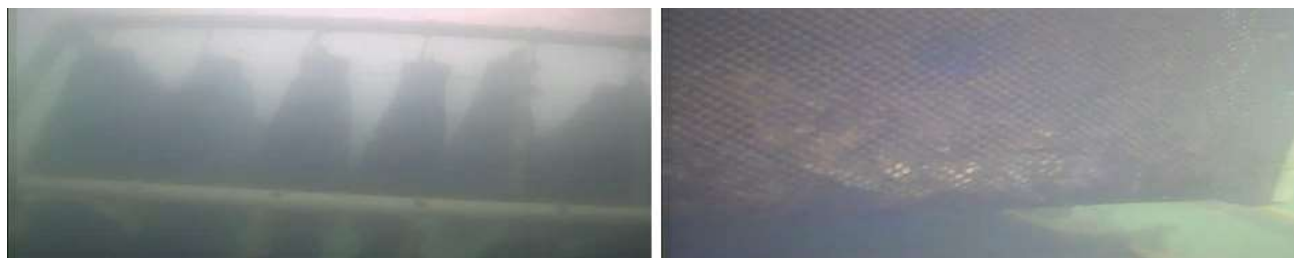


Figure 20 - View of the top row of bags in a rack from under the water (left) and looking at the oysters in the bottom part of a bag (right)

Keeping the oysters in bags also provides a physical barrier against mature drills and other large predators, which cannot pass through the 6mm bag mesh. In addition, two different types of copper barriers were applied to some of the frames at the midpoint unions to discourage drills from traveling along the supports of the assembly to reach the bags. One type was an 8 AWG stranded copper grounding wire, the other was a 1-inch wide band of 0.025-inches thick copper flashing. These details are shown at A and B respectively in Figure 21. Figure 22 shows predators unable to reach the overwintered oysters.



Figure 21 - Copper Barriers on Overwintering System



Figure 22 - Conch and starfish predators in foreground prevented from reaching overwintered oysters in the background

C. Overwintering System Installation

A custom raft was constructed for installation of this overwintering system. The raft held a frame in the water while workers attached bags to the lines on the frame. When loading of the frame with bags was complete, staff used lines to lower the frame to the bottom. The assembly was designed to be light enough in the water for staff to manipulate the frames for positioning on the bottom. Furthermore, the low net weight of the assembly will make it feasible for staff to retrieve the loaded frame from the bottom in the spring time.

The process of installing bags on the racks and sinking them to the bottom took place over the course of three days. After the first overwintering deployment day (December 14, 2016), half of the field had been submerged. Then there was a cold weather event that lasted 2 days. The oysters that had not been submerged on racks remained in floating gear that kept them immersed in water. The oysters were inspected after this cold event and appeared to be unharmed.

Figure 23 shows the staging of the overwintering racks during the installation period and Figure 24 shows a close-up of the overwintering system submerged for field installation.

The location of the overwintering system is shown in Figures 25 and 26, with a Sidescan Sonar image of the entire installation upon completion shown in Figure 27.

Based on data shown in Figure 12, the total biomass of oysters that were submerged was over 10,000 kg. This total weight was determined by direct measurement of oyster weights and survival. Over the course of the growing season, the shells of dead oysters were removed when bags were evaluated to assess mortality. In the spring, these oysters will be graded and an overwintering mortality will be determined.



Figure 23 - Staging of Overwintering System for Installation



Figure 24 - Submerged Overwintering Assembly



Figure 25 - Winter stick markers showing location of overwintering racks



Figure 26 - View of winter racks at low tide on a calm day, looking east at the left and west at the right. Corner markers are visible at the top of both photos. The arrow shows the location of the monitoring sensors referenced in Figure 29.



Figure 27 - Sonar scan of winter rack system after deployment on the bottom

D. Ongoing Monitoring

Prior to overwintering, temperature sensors were used to establish field conditions. Two temperature sensors were placed near the intended overwintering site to monitor water temperature at 10 minute intervals. One sensor was located a few inches below the surface, moving up and down with the water level, and the other sensor was fixed about a foot off the bottom near where the deepest overwintered oysters would be. The values from these two sensors are shown in Figure 28, along with a line showing the time period when overwintering was undertaken. Typically oysters are kept on the surface where environmental conditions including temperature and dissolved oxygen are frequently optimal for health as late into the winter season as possible. Common practice is to submerge the oysters below the surface as soon as the water temperature drops below 6°C for six days in a row. During 2016, this threshold was preceded by a forecast of low temperatures for several days that put the water surface at risk of freezing. Consequently, overwintering was undertaken earlier than usual. The water surface never froze, but it can be seen that the water temperature did drop considerably during the cold weather period. Seawater typically freezes at -2°C, a temperature that clearly was not reached even at the surface. The close tracking of the surface and bottom temperatures highlights two important features of Lonnie’s Pond:

- There is that there is a high turnover rate of water coming in from Pleasant Bay; and
- There is not persistent stratification at the location where the oysters are being maintained.

For ongoing monitoring, a cluster of sensors was placed in the field of winter racks to measure temperature, water level, salinity, and dissolved oxygen at 15 minute intervals throughout the winter season. These sensors are shown in Figure 29. The data is downloaded from the sensors regularly and evaluated for events of concern. Figure 30 shows that the dissolved oxygen content does not fall below 12 mg/L, consistent with typical winter conditions. Figure 30 also shows that the normal cycle of tidally-influenced water levels can be affected by weather conditions. Figure 30 shows a decreasing water level trend from 1/4 to 1/6 which was likely the result of a northerly wind keeping water in the south end of Pleasant Bay.

It can also be seen that the water level range over the two-week span shown in Figure 30 was 1.65m (65”), and that the typical daily oscillation involves one change of about 0.9m (36”) and another change of about 1.2m (48”). These large tidal variations offer further evidence that there is a high rate of exchange of water with Pleasant Bay.

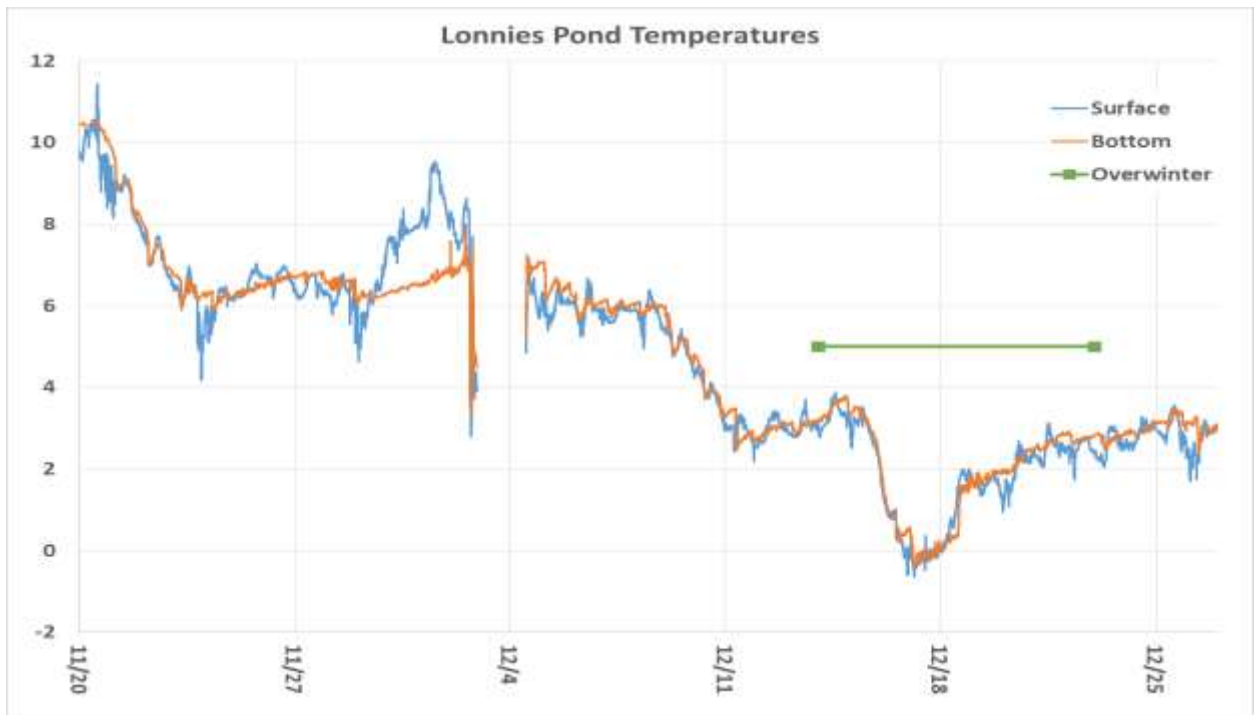


Figure 28 - Water temperature at the site where oysters were overwintered



Figure 29 - Cluster of sensors for monitoring temperature, water level, salinity, and dissolved oxygen shown in the foreground at the right, with a rack in the background at the left

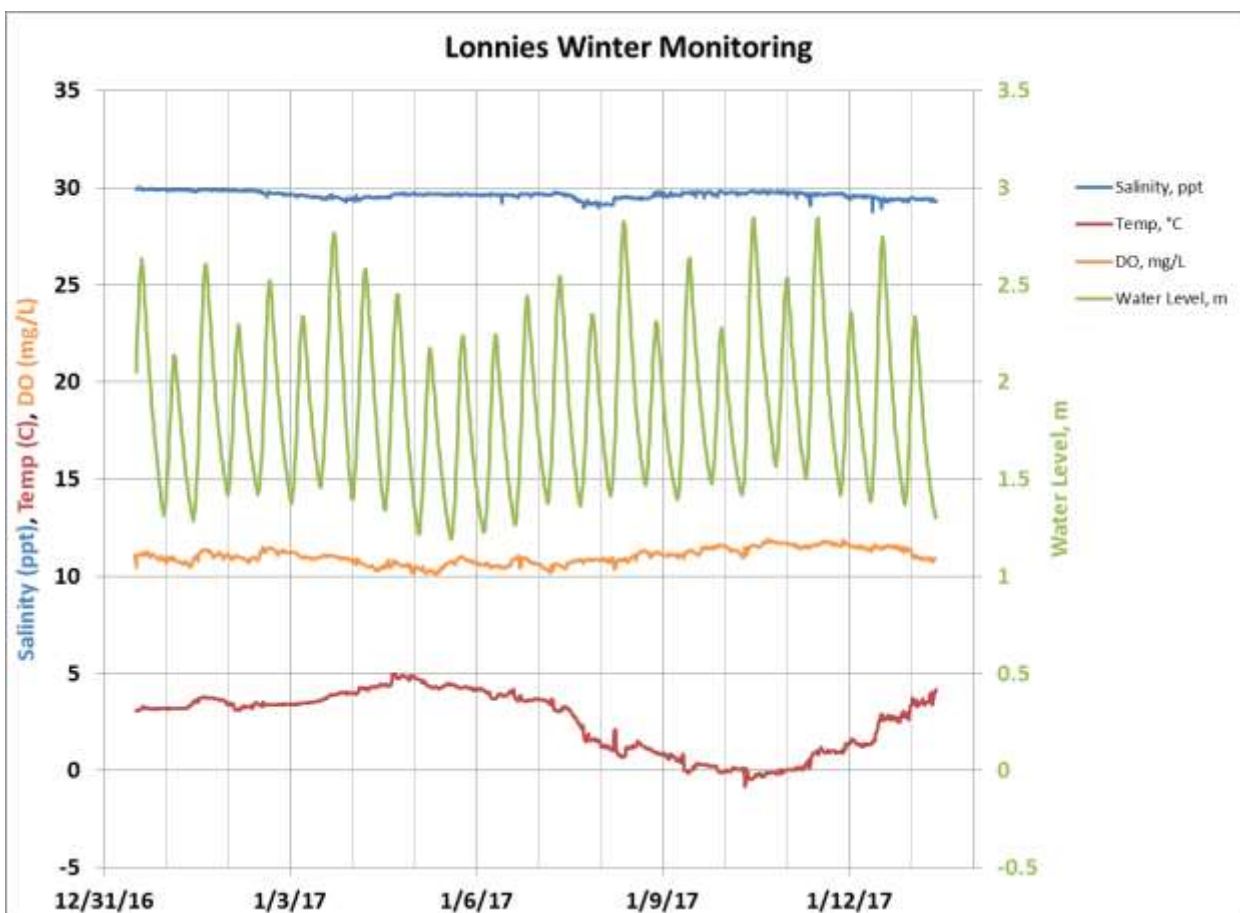


Figure 30 - Winter Sensor Data

8. Summary of Monitoring Results and Recommendations

A. Summary of Water Quality Monitoring Results for First Year Demonstration

The Lonnie’s Pond demonstration area was monitored by SMAST staff over the first year of the demonstration project. The technical report (Howes et al. 2017) presents the detailed methodology and findings of this data collection and analysis program. In general, a sampling program was implemented to establish both a 2016 water quality benchmark for Lonnie’s as well as to initially quantify nitrogen removal due to denitrification enhancement attributable to the oyster installation. From June 29, 2016 to October 19, 2016, eight sampling stations were monitored. These stations are shown in Figure 31 and were selected to further refine the long term water quality sampling database that was initiated for Lonnie’s Pond as part of the MEP (Howes et al. 2006).

Sampling occurred every other week during mid-ebb tide at the surface, bottom, and at mid-water column if possible. During the demonstration period, intensive water column sampling also occurred over complete tidal cycles on August 10, 2016, August 24, 2016, September 13, 2016, and October 12, 2016). Samples were collected at nominal hourly intervals over consecutive flooding and ebbing tides. In parallel with the water column sampling, an Acoustic Doppler Current Profiler (ADCP) was deployed to measure current direction through the oyster area relative to the sampling points. The purpose of this sampling regime was to quantify changes in water column constituents through the oyster field. It was expected that particulate organic nitrogen (PON), total chlorophyll-a and bioactive N would be affected by the demonstration, although the complete suite of nitrogen components, orthophosphate and dissolved oxygen were also assessed.

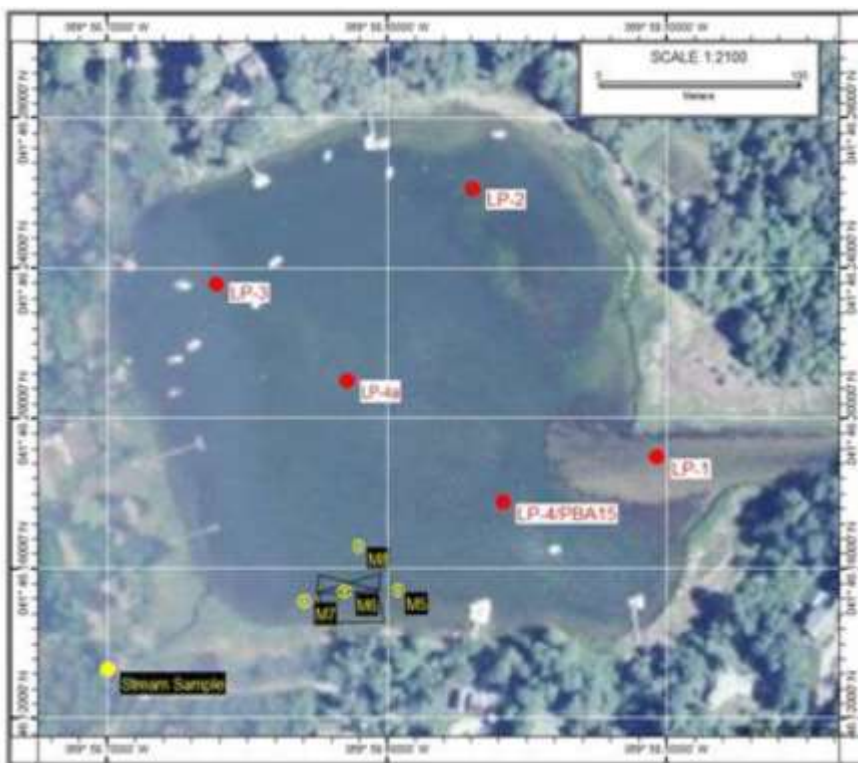


Figure 31 - SMAST Monitoring Stations (Howes et al. 2017)

Samples were analyzed for: temperature, salinity, total nitrogen (TN), chlorophyll-a (Chl-a), pheophytin-a, orthophosphate, dissolved oxygen (DO), transparency (secchi depth), and alkalinity according to protocols outlined for the MEP. The constituents of total nitrogen include (nitrate + nitrite), ammonia, dissolved organic nitrogen (DON) and PON. Quality assurance samples (field duplicates) were also collected, as is protocol according to the Quality Assurance Project Plan (QAPP) under which SMAST collects MEP samples. DO and temperature profiles were performed at multiple depths and Winkler samples were collected in

triplicate at water quality stations that had in-situ sensors. Continuous water quality monitoring of DO and Chl-a was conducted using five YSI-6600 sondes and HOBO® light sensors anchored at stations M5, M6, M7 and M8. Samples were also collected at the outflow from the cranberry bog and herring run when sufficient flow was available.

The major results of the first year of demonstration monitoring in Lonnie's Pond include:

- Phytoplankton biomass was removed by the oysters as water flowed through the oyster deployment. This is evidenced by the reduction in Chl-a concentrations and PON within the oyster field, relative to samples taken adjacent to the installation. These reductions in Chl-a and PON are statistically significant ($p < 0.5$) and were seen during the tidal studies designed to capture water ebbing through the demonstration area;
- Bioactive N levels declined by 12 to 20 percent during passage through the oyster field. The decrease in bioactive nitrogen concentrations is likely due to the lowering of PON concentrations;
- Observed nitrogen removals are conservative estimates due to the oblique patterns of flow through the oyster area in the surveys, which underestimates uptake;
- There was a clear temporal trend with higher levels of PON, Chl-a and bioactive N in mid-summer, which is consistent with increased eutrophic conditions in estuaries in warmer summer months (poorest water quality July through mid-September);
- Biodeposition of feces and pseudofeces from the oysters was observed in the oyster deployment, and these biodeposits stimulated overall sediment respiration rates and denitrification;
- Biodeposition of nitrogenous particles by the oysters was more than twice the amount of nitrogen the oysters incorporated into shell and tissue biomass;

- Denitrification (transformation of fixed nitrogen to nitrogen gas, N₂) was enhanced in sediments receiving oyster biodeposits; and
- Because of drought conditions, the oyster study was not influenced by surface water flows in 2016. The nitrogen loading to Lonnie’s Pond from Pilgrim Lake calculated during the low flow conditions of 2016 was significantly lower than was calculated for 2003 flows.

B. Planning Calculations Based on Water Quality Monitoring Results

Several key future planning calculations can be made based on the data presented in Section 5 and information presented in the SMAST technical report (Howes et al. 2017), including:

- Oyster food availability (Chl-a PON and POC); and
- Denitrification contribution to nitrogen-removal over the course of the critical impairment period (July through mid-September).

These factors play a significant role in determining both the daily as well as total nitrogen-removal accomplished by a given quantity and size of oysters. The results of these calculations demonstrate that either Y1 or Y2 oysters can be used to meet both TMDL requirements and total nitrogen load reduction targets.

One key finding of the SMAST report is the food concentrations for summer and fall of 1,740 (±213) and 633 (±57.8) µg C/L seawater, respectively. Observations by others suggest that there is no increase in oyster feeding rates at food concentrations above 300 µg C/L (Tenore and Dunstan 1973). Thus the SMAST findings suggest that oyster growth will not be food-limited in Lonnie’s Pond. When a high density of grow-out gear is being used, it is important to verify that there is sufficient water flow throughout the field to maintain adequate food concentration. An assessment of this will be undertaken during the second and third years of the demonstration program.

As described in Section 3, an important goal of the water quality monitoring during the first year of this demonstration project was to determine the level of enhanced denitrification achieved by the oysters. The preliminary assessment indicates that the demonstration system removed 17.3 kg of nitrogen by denitrification and 25.9 kg of nitrogen by uptake (increased biomass). Overall, it appears that denitrification conservatively removes approximately 0.67 kg N for each 1 kg N removed in oyster harvest. In September/October when oysters had reached their mid-season biomass increase, an amount equivalent to almost one-third of the biodeposition rate was denitrified each day. The study indicated that denitrification should continue to be enhanced past the time of oyster harvest as the sediment incorporated biodeposits continue to contribute to enhanced denitrification. It is not possible at this point to determine from this partial year the full extent of nitrogen removal through denitrification, as the effect will likely continue into the next spring and summer increasing the estimated N removal.

C. Modeling Biodeposition in Lonnie’s Pond

It is believed that the denitrification enhancement will be proportional to the amount of biodeposition. Measurements from the SMAST technical report have been used to predict what would happen as the number of oysters deployed in Lonnie’s Pond is scaled up using a model developed by the Virginia Institute of Marine Science for the Army Corp of Engineers (Sisson et al, 2011). This model makes it possible to determine two critical parameters:

- Total biodeposition
- Timing of biodeposition

The model suggests that the biodeposition rate of oysters (BD) can be calculated as follows:

$$BD = \alpha * T * TSS^\beta * e^{-\delta * TSS} \text{ mg per gram tissue per hour, where:}$$

TSS is the total suspended solids in mg/L; and

T is temperature is in degrees C.

The parameters α , β , δ as well as TSS and T are characteristic of the system being modeled and provide an estimate of the expected biodeposition rate as a function of the tissue mass of the oysters in the field. This model accounts for three notable features of biodeposition rates:

- A threshold effect of low seston concentration upon filtration;
- A clogging effect of high seston concentration upon filtration; and
- A positive correlation between filtration and temperature.

In order to model the biodeposition in Lonnie’s Pond, values for TSS and T as a function of time were required. Table V.1 of the SMAST technical report (Howes et al. 2017) indicates a declining relationship between TSS and POC. POC changes from 19.5 percent of TSS for ‘Summer’ to 9.0 percent of TSS for ‘Fall’. It was assumed that there was a linear decline in the relationship between TSS and POC from June to October. The TSS values were calculated by applying this linear decline to the measured POC values and are shown by the green line in Figure 32. The plotted points for temperature and POC include values interpolated and extrapolated for the model.

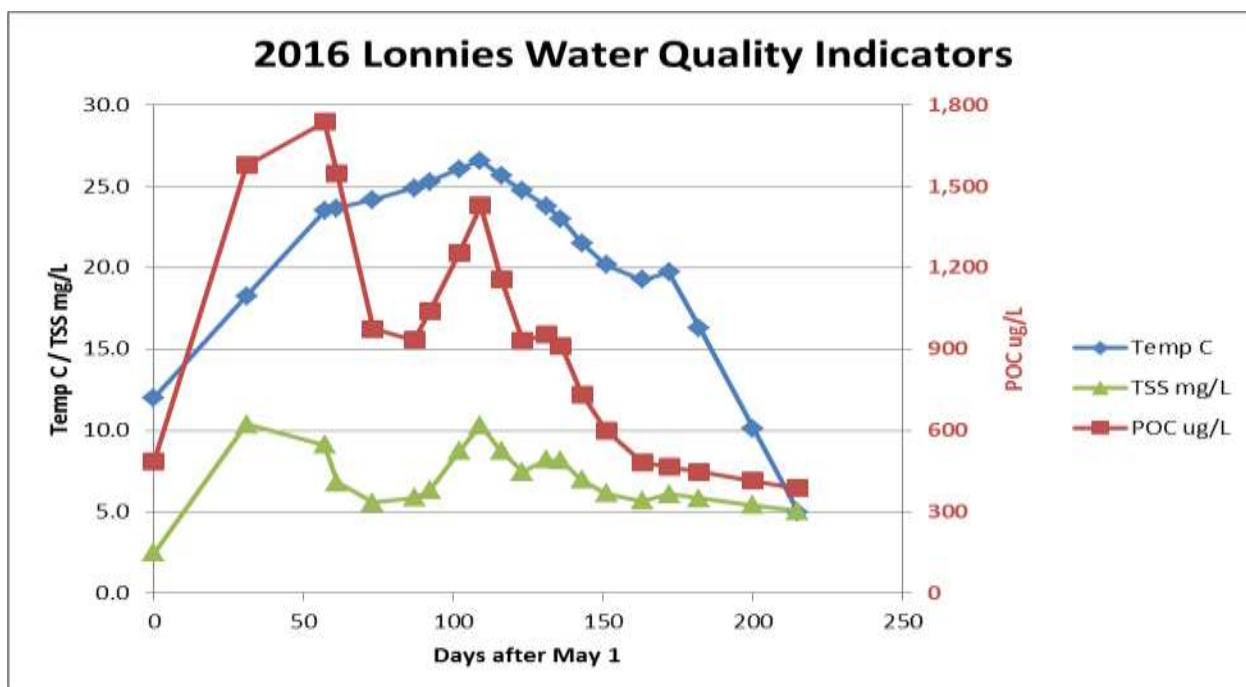


Figure 32 - Data for Temperature and Total Suspended Solids (TSS) Used for Biodeposition Modeling

The values for Temp and TSS shown in Figure 32 were used in equation 1 to determine $\alpha=0.0015$, $\beta=5.12$ and $\delta=0.64$. These values are suitable for modeling Lonnie’s Pond, and the predicted biodeposition matches the rates calculated from SMAST Table V.2. The biodeposition data in SMAST Table V.2 was associated with August 16 (Day 107 after May 1) and October 5 (Day 157 after May 1). The biodeposition rates were calculated as:

- August 16, 2016: BD = 35.1 kg/day / 155.2 kg DW = 9.42 mg/g DW/hr; and
- October 5, 2016: BD = 31.7 kg/day / 222.2 kg DW = 5.94 mg/g DW/hr.

These observed points are shown in Figure 33, along with the predictions of equation 1 using the parameters listed.

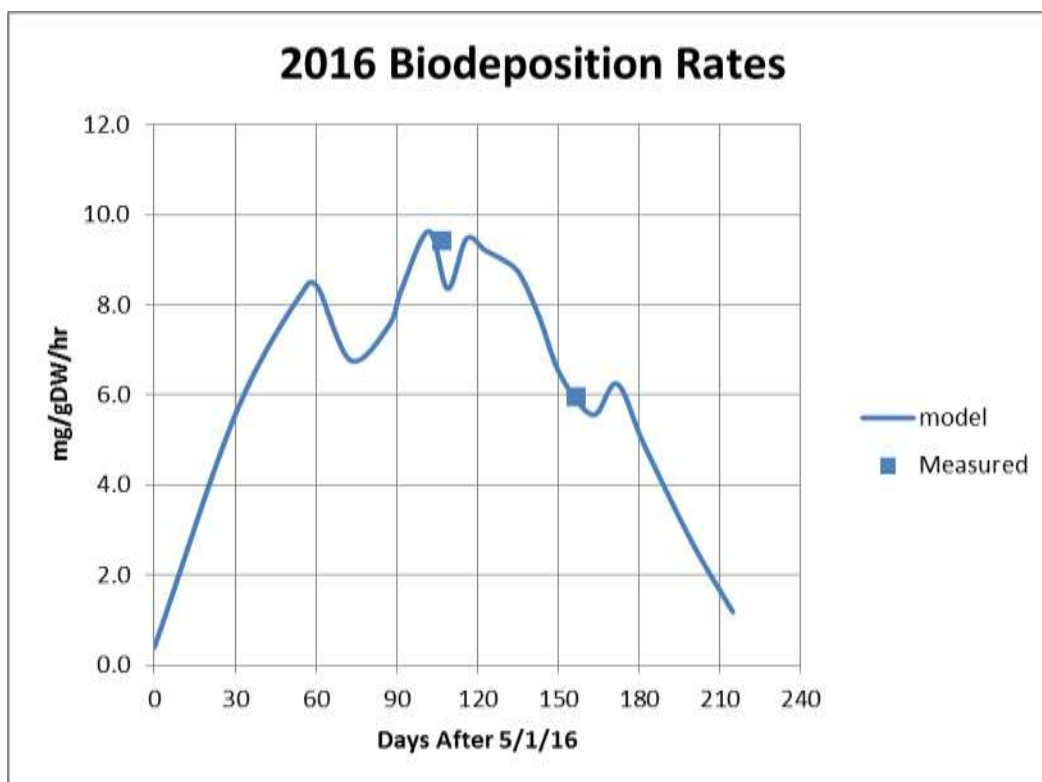


Figure 33 - Predicted Biodeposition Rates during the Growing Season

D. Using the Biodeposition Model to Predict Denitrification in Lonnie’s Pond

Figure 13 in Section 5 shows the tissue dry weight as a function of time for first year (Y1) and second year (Y2) oysters. These values were determined based on measurements made during 2016, and extrapolated to cover a full growing season. Multiplying the tissue dry weight in Figure 13 by the biodeposition rate in Figure 33 provides an estimate of the biodeposition rate per oyster over the course of the growing season. The total amount of biodeposits generated by a given deployment of oysters can then be determined by multiplying this rate by the number of oysters per bag, and integrating as a function of time. The results of this calculation are shown in Figure 34. These values were then normalized to the total amount of biodeposits produced over the season to obtain a function expressing the percentage of the total biodeposits that had been produced at any given time during the season. This function is shown in Figure 35.

SMAST provided an estimate of total amount of nitrogen removed by enhanced denitrification that is 67 percent of total nitrogen uptake due to oyster growth over the 2016 demonstration period. The timing of this nitrogen removal by enhanced denitrification was not specified. To estimate when the nitrogen removal by enhanced denitrification would occur in a full-scale system, it was assumed that enhanced denitrification was proportional to the total amount of the biodeposition that had occurred. Using this estimate, the percent of the total nitrogen removed by enhanced denitrification would be equal to the percent of biodeposition that had occurred at each point in the growing season. The amount of projected denitrification for a full-scale system was estimated to be the product of the function in Figure 35, the total amount of nitrogen taken out of the water by growth of tissue and shell, and the enhanced denitrification factor of 67 percent. The results of this calculation are shown in Figure 36.

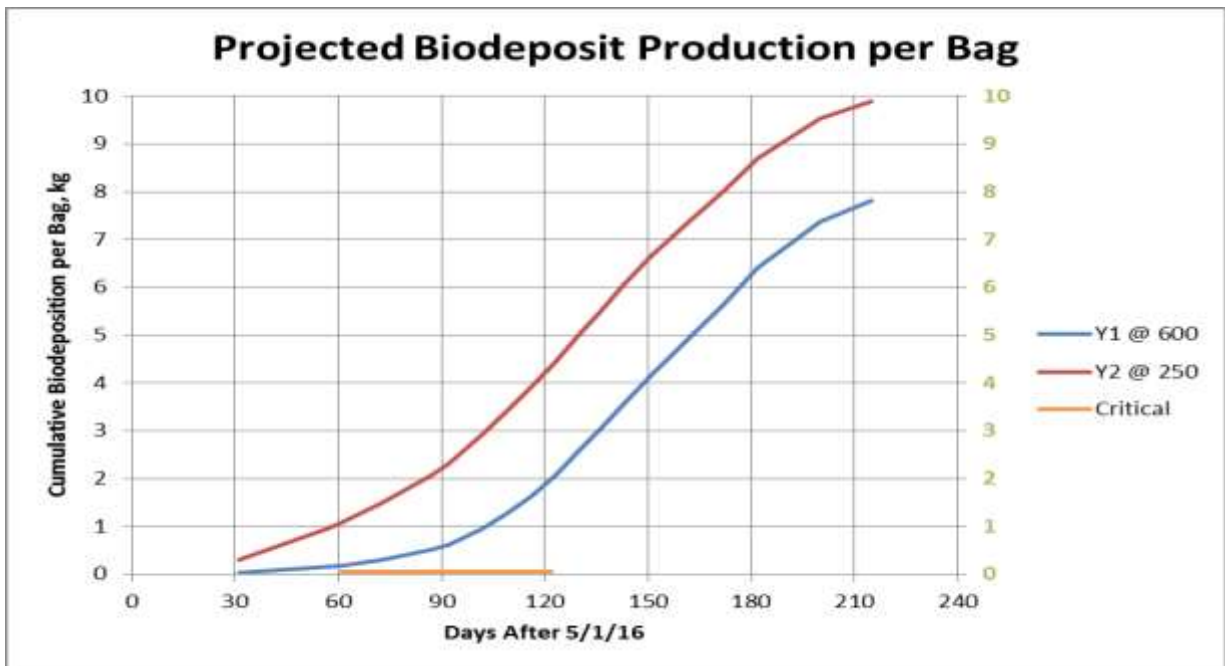


Figure 34 - Predicted accumulation of biodeposits over the course of the growing season from Y1 oysters at a stocking density of 600 per bag and Y2 oysters at a stocking density of 250 per bag

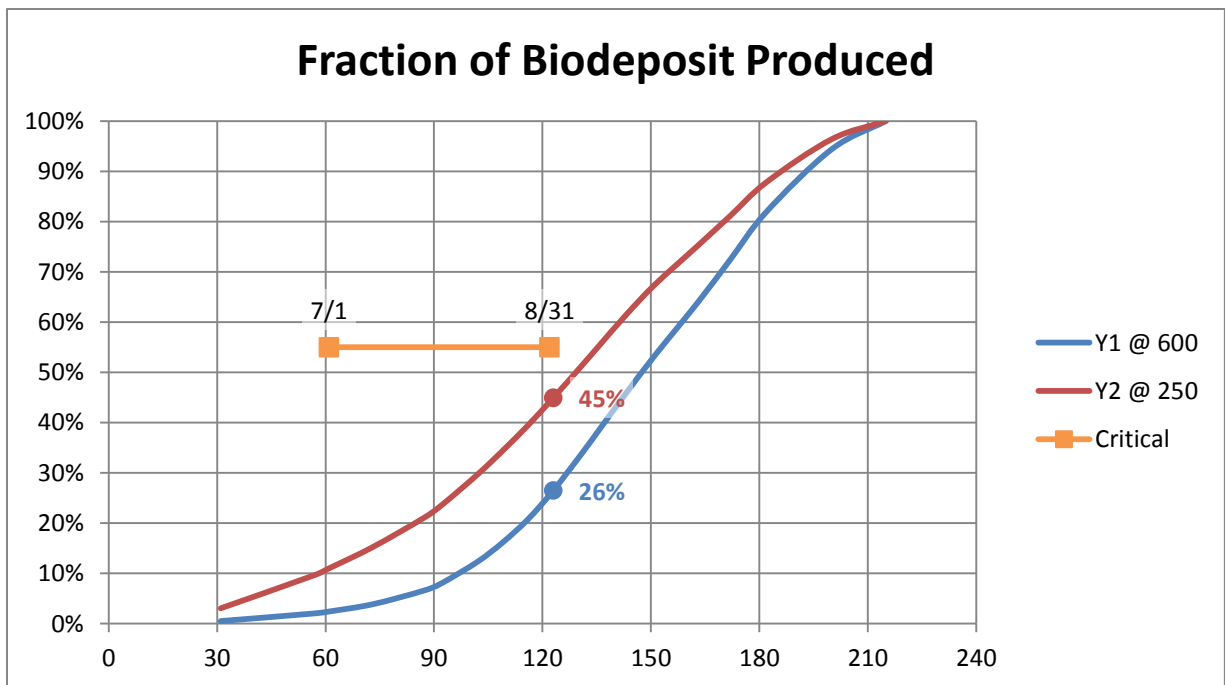


Figure 35 - Fraction of the Total Biodeposits that will be Produced over the Course of the Growing Season

E. Predicting Total Nitrogen Removal by Oysters in Lonnie’s Pond

The total nitrogen removed by oysters is the sum of uptake into biomass (tissue and shell) and enhanced denitrification in the sediment. To predict the amount of nitrogen removed from the water due to uptake in the growth of oyster tissue and shell, the tissue dry weight in Figure 13 was multiplied by the nitrogen content from Table 2, which is 10.3 percent for Y2 oysters and 10.5 percent for Y1 oysters. These values, multiplied by 3,000 bags for a Y1 deployment and 4,500 bags for a Y2 deployment, are shown by the double compound lines labeled ‘Y1 U’ and ‘Y2 U’ in Figure 36.

The nitrogen removed through enhanced denitrification added to the nitrogen removed through uptake is shown by the triple compound lines labeled ‘Y1 U+D’ and ‘Y2 U+D’ in Figure 36. The slope of these triple compound lines corresponds to the daily nitrogen removal rate which is associated with TMDL compliance. This calculation is shown by the single solid lines in Figure 36. It is helpful to note that projections for both the nitrogen removal by uptake and the nitrogen removal by enhanced denitrification are made using models driven by the dry tissue weight of the oysters. In order to provide a more efficient and cost effective method for monitoring the actual performance of a full-scale deployment, the second year of the demonstration project will examine whether there is significant seasonal variation in the relationship between tissue dry weight and live harvest weight for oysters grown in Lonnie’s Pond. This is an important factor because dry weight is not a practical parameter for routine monitoring for compliance during full-scale implementation. Harvest wet weight biomass is the measurement that will be routinely made.

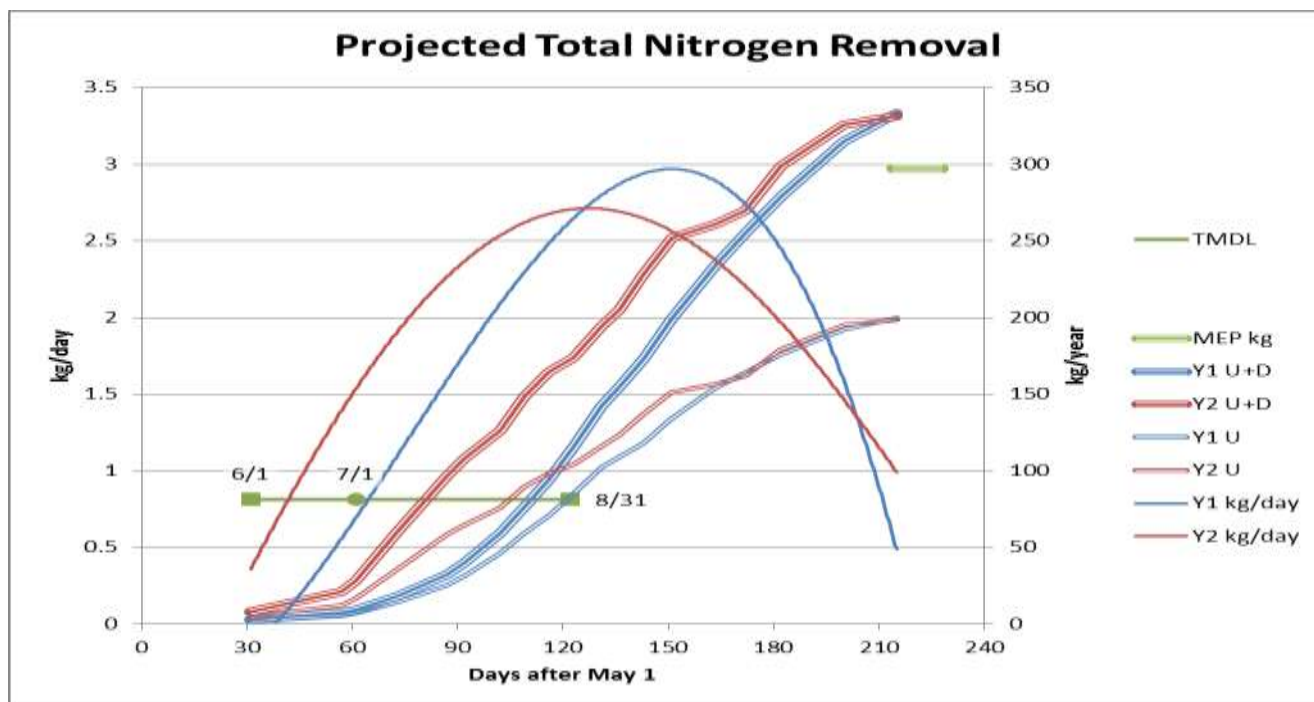


Figure 36 - Projected nitrogen removal for full scale Y1 (3,000 bags at 600 oysters/bag) and Y2 (4,500 bags at 250 oysters/bag) scenarios in Lonnie’s Pond

The solid single lines are associated with the daily nitrogen removal rate on the left side vertical axis, and include a consideration of the total nitrogen removed by both uptake (U) through new growth as well as enhanced denitrification (D). The compound lines are associated with the annual removal amount on the right side vertical axis. Lines labeled U represent only the nitrogen removed by uptake through new growth. Lines labeled U+D represent the nitrogen removed by uptake through new growth as well as enhanced denitrification.

Key observations for the Y1 system as shown in Figure 36 include:

- The Y1 system is expected to meet TMDL requirements in early July and exceed the MEP annual reduction target before the end of the growing season;
- The Y1 system could be scaled up by another 50 percent using a total of 4,500 bags within the one-acre footprint. This scenario would both meet the TMDL requirement approximately ten days earlier than the 3,000-bag deployment, as well as exceed the target total nitrogen removal goal. Approximately 500 kg N will be removed by uptake and denitrification enhancement, and uptake alone would account for the target removal rate of 300 kg N.
- TMDL compliance and annual load reductions are not affected by the sale of oysters because the oysters are not removed during the growing season.

It may be possible to increase the ending Y1 stocking density to 1,000 oysters per bag. If growth and enhanced denitrification rates scale linearly with the population increase, then a system ending with 4,500 bags at 1,000 oysters per bag would be capable of removing 500 kg of nitrogen through uptake and 832 kg of nitrogen through combined uptake and denitrification enhancement. If these stocking and bag densities can be achieved but there is no interest in removing nitrogen beyond what is required to be removed by TMDL and MEP targets, then the system could be scaled back to end with 1,800 bags covering less than half an acre. While these grow-out densities may seem high to commercial growers, the municipal propagation program operated by the Town of Falmouth has demonstrated comparable growth rates with 900 oysters per bag deployed at 4,300 bags per acre (Figure 37). Part of the activity of the second-year demonstration program will include evaluation of the feasibility of Y1 grow-out of 1,000 oysters per bag with a 4,500 bag per acre density.



Figure 37 - Municipal Oyster Propagation in Floating Bags in an Estuary, Operated by the Town of Falmouth in 2016

Key observations for the Y2 system as shown in Figure 36 include:

- The Y2 system is expected to meet TMDL requirements in early June and exceed the MEP annual reduction target before the end of the growing season;
- The Y2 system involves nearly complete coverage of the 1 acre site by 4,500 bags through the end of the season. There is no appreciable space for additional bags.
- The Y2 projection was designed to exceed the MEP annual target due to the anticipated removal of some marketable oysters prior to the end of the growing season.
- The removal of a modest number of marketable oysters during the critical impairment period (July and August) is not expected to affect TMDL compliance because the daily nitrogen removal rate (kg per day) ranges from 1.5 to over 2.6 times the requirement during this timeframe when calculated with no removal.
- There is not adequate space to significantly increase the number of Y2 oysters deployed within the assumed 1-acre area that will be available for use. In order to ensure sufficient uptake and denitrification for TMDL and total annual compliance, the majority of the Y2 oysters need to remain in the field for the majority of the growing season. As a result, a private grower may need to make use of a sizeable line of credit to support the cash flow requirements of a commercial operation. Forcing the grower to wait until late in the season to sell may also reduce the market price they can obtain.

Based on these results, the following recommendations are made for second-year monitoring:

- Determine the preferred orientation of plots for second-year monitoring based on measured flow patterns;
- Determine the feasibility of walking within one experimental plot to compare enhanced denitrification rates with an undisturbed plot;
- Assess indicators of food availability such as Chl-a and PON at regular intervals throughout the growing season both within and outside the growing area;
- Measure biodeposition and denitrification rates before, during, and after the critical impairment period, and coordinate this sampling with nitrogen content analysis to enable assessment of what is required for both Y1 and Y2 systems to achieve TMDL target levels during the critical impairment period;
- Install tide gages to verify local residence time and tidal exchange from MEP Report (Howes et al. 2006); and
- Assess the utility of running the MEP model to determine the impacts to Lonnie's Pond if the target nitrogen load is removed but no other nitrogen-removal occurs in the Pleasant Bay system.

9. Long Term Approach for Lonnie's Pond with Cost Analysis

A. Key Considerations

The results of the first year of the Lonnie's Pond demonstration provide empirical data and information on which to base future planning decisions. This demonstration established several key parameters for Lonnie's Pond, including:

- Over the course of the project, Y1 oysters grew by approximately 1 gram dry tissue per individual and Y2 oysters grew by approximately 1.6 grams dry tissue per individual. Note that due to the late funding of the project by the Town, the project period spanned only 80 to 85 percent of the typical growing season;
- The total nitrogen uptake by oyster growth, as a fraction of the dry tissue weight of the oysters, was approximately 10.5 percent for Y1 oysters and approximately 10.3 percent for Y2 oysters;

- The nitrogen removal by enhanced denitrification was approximately 67 percent of the nitrogen uptake by new growth;
- Throughout the growing season the food availability in Lonnie's Pond remains well above the threshold of 300µg C/L seawater (Tenore and Dunstan 1973) for maximum feeding rate;
- Y2 oysters grow well through the peak impairment period with stocking densities of 230 to 250 per bag;
- Y1 oysters also grow well through the peak impairment period and are expected to grow well at stocking densities of 600-1,000 per bag during this time;
- Floating bags were installed at a density of over 3,600 per acre. Density could be increased to 4,950 per acre with some adjustments to the layout;
- If the project were operated by a commercial grower, then 100 percent of Y2 oysters installed in June could have been sold as petite or standard market size by the end of the same growing season;
- Over 80 percent of Y1 oysters that have been started from 2 to 3 mm seed in early May will be market ready (2.5-inches/64 mm or larger) by early in the next growing season;
- The bottom sediment is believed to be too soft for planting oysters, and predators including oyster drills, conches, starfish, and blue crabs are present in Lonnie's Pond, so off-bottom overwintering and second year grow-out strategies must be used; and
- Lonnie's Pond is 15 acres, but the useable water surface area for aquaculture is not more than one acre so as not to encroach on other uses of this waterbody.

Related factors that impact long-term implementation as well as the second year of this demonstration include:

- 2 to 3 mm seed is available in early May but special arrangements including a cash deposit must be made with a qualified supplier at least six months before the seed is needed;
- Massachusetts now allows the sale of petite oysters which are between 2.5 to 3-inches (64 mm to 72 mm) in length, measured from hinge to shell margin;
- There is an existing pathway for a commercial grower to sell intermediate seed (the end product of growing Y1 oysters) and a probable pathway for the Town to sell intermediate seed. The revenues would be in the range of \$125 to \$190 per thousand oysters sold;
- Only commercial growers can harvest and sell Y2 oysters (the Town is not allowed to sell through the propagation permit), and the market value ranges from \$0.35 to \$0.65 per oyster depending on quality;
- Growers report grow-out stocking densities of 500 to 1,000 for Y1 oysters and 150 to 250 for Y2 oysters. This project in year one has demonstrated the ability to support low mortality growth on the high end of stocking densities. The marketability of these oysters is believed to be high based on communication of photographs and size and weight data to wholesalers. Actual market value will be assessed by bringing samples to wholesalers during the second year of the demonstration program; and
- Nitrogen reduction targets for the Lonnie's Pond watershed are 297 kilograms per year and 0.81 kg/day during the critical impairment period of July and August (Howes et al. 2006).

Table 3 - Summary of Long Term Implementation Scenarios

| Program | Description | TMDL / MEP % | \$/kg N Cost to Town |
|----------------|---|---------------------|-----------------------------|
| Y1A | The Town purchases 2.1 million 2 to 3 mm early start seed every year, grows it in Lonnie’s Pond for one season, removes the oysters at the end of the growing season, and disposes of them. | Yes / 110% | \$341 |
| Y1B | The Town purchases 2.1 million 2 to 3 mm early start seed every year, grows and overwinters it in Lonnie’s Pond, and sells it as intermediate seed. | Yes / 110% | \$(67) |
| Y1C | Commercial grower purchases 2.1 million 2 to 3 mm early start seed every year, grows and overwinters it in Lonnie’s Pond, and sells it as intermediate seed. | Yes / 110% | \$11 |
| Y1D | Commercial grower purchases 2.1 million 2 to 3 mm early start seed every year, grows it in Lonnie’s Pond for one season, overwinters it in Lonnie’s Pond, and grows it out for a second year on a site outside Lonnie’s Pond and using no more than 20,000 square feet of surface gear. | Yes / 110% | \$11 |
| Y2E | The Town purchases 1 million 2 to 3 mm early start seed every year, grows and overwinters it in Lonnie’s Pond, uses survivors to stock a predominantly Y2 field in Lonnie’s Pond, and bottom plants the Y2 survivors at the end of the second growing season outside of Lonnie’s Pond. | No / 92% | \$411 |
| Y2F | The Town maintains oysters that are older than Y2 continuously inside Lonnie’s Pond, overwintering them there and also purchasing ~190,000 2 to 3 mm early start seed every year to replenish the field as these older oysters die and are removed. | No / 78% | \$600 |
| Y2G | Commercial grower purchases all intermediate seed, grows it out in Lonnie’s Pond over the course of one season, and by the end of the year has sold everything that survives. | Yes / 106% | \$11 |
| Y2H | Commercial grower purchases 1 million 2 to 3 mm early start seed every year, grows and overwinters it in Lonnie’s Pond, uses survivors to stock a predominantly Y2 field in Lonnie’s Pond, and sells all the Y2 survivors by the end of the growing season | No / 92% | \$12 |

These considerations can be used to inform the selection of a long-term implementation strategy for oyster cultivation in Lonnie’s Pond. The strategy is limited by the need to maintain the oysters in gear, off the bottom. Since this project is constrained by other recreational uses in Lonnie’s Pond, the maximum practical surface grow-out area is one acre, and the maximum anticipated bag density is 4,950 bags per acre. Project options are thus limited to final populations that will fit in 4,950 bags or less. The assessment of nitrogen removal by uptake as well as denitrification discussed in Section 8 and shown in Figure 36 reveals that a deployment with this many bags in a one-acre plot could achieve TMDL compliance and achieve MEP annual targets for nitrogen-removal using either Y1 or Y2 oysters.

The use of either Y1 or Y2 oysters, and different endpoint options for the oysters after the first season of growth leads to eight possible long-term implementation scenarios. Some endpoint options including sale of both intermediate seed and market-size oysters offset the costs associated with growing the oysters. There are four scenarios for each of the two oyster size classes. Scenarios are grouped into categories based on the starting size of seed because costing assumptions and nitrogen-removal are directly linked to these starting seed sizes. Note that some of the scenarios presented do not meet required TMDLs and MEP reduction targets. These options are presented for completeness because the question of retaining oysters for several years has been discussed at SWG meetings, and to show the maximum nitrogen-reduction possible for these scenarios given the constraints of the site.

Key details of the four Y1 scenarios are summarized in Table 4. Key details of the four Y2 scenarios are summarized in Table 6. Information in these tables includes the total number of bags deployed, the starting and ending number of seed, the sale price of oysters needed for approximate break-even, costs and the kilograms of nitrogen removed. Costs and time requirements are based on estimates extrapolated from the first year of the demonstration project and other field experience, and are subject to adjustment after the completion of the second year of the demonstration project. The work flow of the second-year operations will be comparable to full-scale implementation.

Assumptions for Table 4 and Table 6 are presented in Table 5 and Table 7 respectively. The Town-managed options assume that existing infrastructure can be used for gear fabrication and storage, and that a boat comparable to a 19-foot Carolina Skiff will be available when needed for occasional field activities. The Town's fully loaded labor rate is assumed to be \$27.50 per hour for field work and \$35.00 per hour for program oversight. The commercial options assume an investment in all new equipment to support the program, financed at 8 percent over 5 years. It also assumes the employment of insured, skilled labor at a rate of \$25.00 per hour including benefits (paid vacation and sick time) and full health insurance.

B. Y1 Scenarios

For the Y1A scenario, the cost per kilogram of nitrogen removed for a Town propagation program that involves disposing of the oysters after one growing season is expected to be approximately \$341. It may be possible to bottom plant the Y1 oysters at the end of the season, but this would not substantially change the economics of the program. Moreover, bottom-planting oysters that are only one season old could result in a reversal of the nitrogen benefit if the bottom planted oysters do not survive. The nitrogen contained in the oyster tissue typically represents more than two-thirds of the total nitrogen taken up by growth. If the oyster dies, the nitrogen in the tissue will remain in the estuary in some form.

For the Y1B scenario, the Town program includes overwintering the oysters and establishing a pathway for selling intermediate seed at the start of the second growing season. For this scenario, as long as the sale price is \$0.139 per oyster for this intermediate seed, the Town is expected to generate over \$60 in revenues for each kilogram of nitrogen that is removed. This results in a revenue rather than a cost per kilogram of nitrogen removed. The critical task in this scenario is to establish a pathway for the sale of intermediate seed to private growers. This may be accomplished through the Town obtaining permission to sell directly to growers, or may involve partnering with a seed supplier such as Aquaculture Research Corporation (ARC).

For the Y1C scenario, a commercial grower cultivates and sells intermediate seed. The Town expense associated with the removal of nitrogen is limited to program oversight and is estimated to be on the order of \$11 per kilogram of nitrogen. In the Y1C scenario, the Town would not be involved in the growing of oysters. It is expected that a commercial grower could cover their costs at a price for intermediate seed of \$0.173 per oyster. The estimates used for a newly established private business result in costs that are higher than the costs that would be experienced by the Town, and the price point for privately-grown intermediate seed is consequently higher than for intermediate seed that is grown by the Town, but is still well within the range of anticipated market prices.

It is likely that a market for intermediate seed exists. Buyers for this intermediate seed would likely be existing growers interested making a profit by cultivating these large oysters for the short period of time required to have these intermediate seed reach marketable size. As shown in Figure 11, eighty percent of the Y1 oysters grown in Lonnie's Pond were market legal as petites or standard oysters by shell length standards at the end of the first-year growing season. If a grower maintained these oysters during the start of the next growing season, they are likely to be standard harvestable size and acceptable to the high quality restaurant market within a few weeks.

To illustrate the likelihood of a market for intermediate seed at the costs presented in this analysis, it is assumed that a grower purchases intermediate seed for \$0.20 each, and these oysters are sold for \$0.40 each one month later, during the peak season of July and August. At these prices, a grower using 500 bags with 200 oysters each would have a net revenue after paying for the seed of \$20,000. The expenses beyond the seed would be minimal and would include a few weeks of work on the water in the summer. Less than 20 such growers across the Cape would be sufficient to create a demand for the oysters produced by the Y1B and Y1C options. The intermediate seed market is not widely developed, and should be verified before a program is selected that depends heavily on the existence of such a market. As part of the work plan for the second year of the demonstration project, issues relating to the sale of intermediate seed will continue to be discussed with DMF and others.

For the Y1D scenario, a grower is allowed to secure a location for second-year grow-out outside of Lonnie's Pond. This is a viable commercial business and all costs incurred are met with a market price of only \$0.342 per oyster, including an eight percent profit. There are no restrictions on what time of year the oysters are sold, but in order to maintain typical supply/demand locally a restriction of selling into an off-Cape market is recommended. It is significant to note that the business represented in the Y1D scenario would involve full time employment of six people, with benefits including health insurance.

C. Y2 Scenarios

The Y2E scenario estimates the cost per kilogram of nitrogen removed for a Town propagation program that involves bottom planting Y2 oysters at the end of the growing season would be \$411/kg N. This is considered less risky than bottom planting Y1 oysters because the shells will be tougher, therefore the oysters will be less likely to succumb to predators.

The Y2F scenario maintains an oyster population older than Y2, and is projected to cost over \$600/kg N while also being unable to achieve MEP annual nitrogen removal targets due to the limited area available for placing floating gear. This option is presented to provide a complete breakdown of all options, it is certainly not recommended for pursuing.

For the Y2G scenario, a commercial grower purchases intermediate seed and grows it out in Lonnie's Pond until it can be taken to market. The activity of removing oysters for market will have an impact on the system's ability to remove nitrogen. Until this effect is quantified using the findings from the second year of the demonstration program, it has been assumed that the program would require the grower to maintain all the oysters in the field through the majority of the growing season in order to meet the TMDL target goal. This increases the grower's costs over what would be experienced if the only consideration was taking oysters to market as soon as they are ready, and is part of what contributes to the relatively high break-even price of \$0.398 per oyster.

The Y2H scenario allows the grower to use part of the available area inside Lonnie's Pond to raise Y1 oysters (similar to option Y2E) resulting in a slightly lower break-even price of \$0.363 per oyster. The difference is that the profit that would otherwise go to the entity that provided the intermediate seed is retained in this business. If the oyster shape is good and the cup is appropriately deep, this is not an unreasonable price point to achieve. The timing of harvest/sale will also impact market price.

D. Other Considerations

Shellfish aquaculture is a technique for nitrogen removal that can generate a product with significant economic value. The current market for east coast oysters is over \$10 million annually - evidence that it pays to grow oysters (Carter Newell, NACE 2017). As shown in Table 3, if the oysters grown for nitrogen removal are not sold, the cost per kilogram of nitrogen removed by shellfish aquaculture rises significantly.

The Y1D, Y2G and Y2H scenarios involve selling a significant quantity of standard market size oysters. This could have an unfavorable impact on local market prices. Consequently, it has been assumed that the commercial grower would be required to sell Y2 oysters into an off-Cape market. This increases the grower’s costs, as it is necessary to have a refrigerated truck and pay a driver to regularly transport market ready oysters to regional buyers.

Key permitting considerations related to the scenarios involving a commercial grower include the granting of this site for private aquaculture at the local level and the determination of unproductive bottom conditions by DMF. If bottom conditions are found to be productive in this section of Lonnie’s Pond, a rotational system that moves the one-acre growing area within Lonnie’s Pond each year might be employed so that no one area is permanently removed from the public resource. Part of the work plan for the second year of this demonstration is to begin this permitting process in order to evaluate what is feasible to permit.

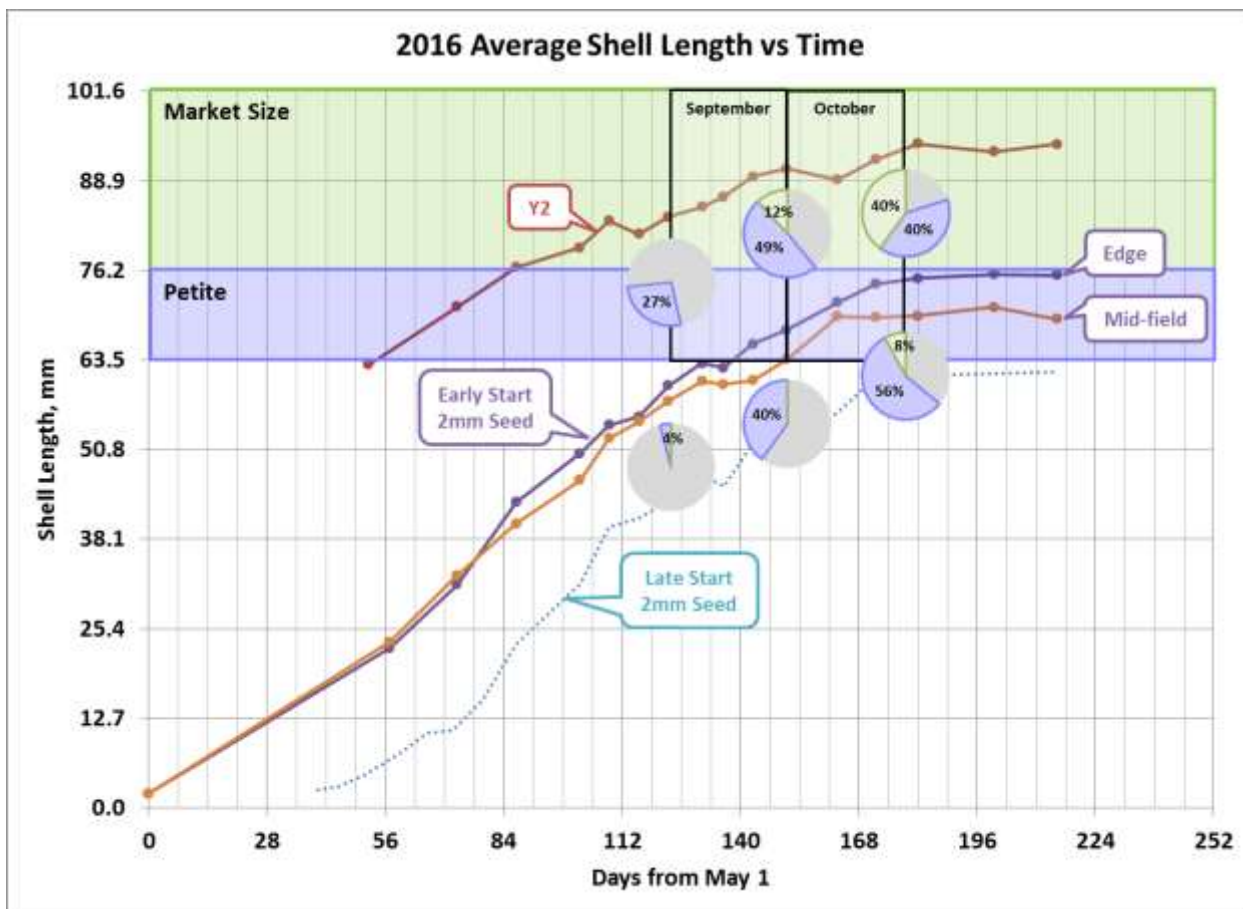


Figure 38 - Average Shell Length and Percent of Total Population to Reach Market Size Over One Growing Season in Lonnie’s Pond

Table 4 - Y1 Seed Scenarios for Long Term Implementation

| | Y1A | Y1B | Y1C | Y1D |
|--|------------|----------------|----------------|---------------|
| | Town | Town | Grower | Grower |
| | No Sale | Intermed. Sale | Intermed. Sale | Standard Sale |
| Y1 Bags | 3,000 | 3,000 | 3,000 | 3,000 |
| Y2 Floating Bags | | | | 2,100 |
| Y2 Bottom Bags | | | | 6,130 |
| Oysters Started | 2,120,000 | 2,120,000 | 2,120,000 | 2,120,000 |
| Y1 End Oysters Removed from Lonnie's | 1,802,000 | 1,802,000 | 1,802,000 | 1,802,000 |
| Y2 End Oysters Grown Outside Lonnie's | | | | 1,531,700 |
| Sale Price of Program Oysters | \$ - | \$ 0.139 | \$ 0.173 | \$ 0.342 |
| Total Market Value of Program Oysters | \$ - | \$ 250,478 | \$ 311,746 | \$ 725,040 |
| Total Capital for Floating Gear | \$ 6,996 | \$ 6,996 | \$ 6,996 | \$ 34,926 |
| Labor for Fabrication of Floating Gear | \$ - | \$ - | \$ - | \$ 26,250 |
| Over-winter Gear (Fab Labor & Materials) | \$ 30,910 | \$ 30,910 | \$ 34,375 | \$ 34,375 |
| Capital for Other Equipment | \$ 5,000 | \$ 9,300 | \$ 9,300 | \$ 241,725 |
| Y1 Capital Requirement | \$ 42,906 | \$ 47,206 | \$ 50,671 | \$ 337,276 |
| Amortized Financed Gear Cost | \$ 8,581 | \$ 9,441 | \$ 12,329 | \$ 82,065 |
| Seed Cost | \$ 33,920 | \$ 33,920 | \$ 33,920 | \$ 33,920 |
| Field Labor Cost | \$ 55,350 | \$ 144,450 | \$ 200,625 | \$ 396,844 |
| Business Overhead | | | \$ 39,703 | \$ 153,085 |
| Total Annual Expenses | \$ 97,851 | \$ 187,811 | \$ 286,577 | \$ 665,913 |
| Program Oversight | \$ 3,360 | \$ 42,735 | \$ 3,360 | \$ 3,360 |
| Town Net Cost | \$ 101,211 | \$ (19,932) | \$ 3,360 | \$ 3,360 |
| Grower Net Profit | | | \$ 25,169 | \$ 59,127 |
| Net Profit % of Gross Revenue | | 8.0% | 8.1% | 8.2% |
| N Removed by Uptake, kg | 193 | 193 | 193 | 193 |
| N Removed by Denitrification, kg | 130 | 130 | 130 | 130 |
| N Removed in Shells (Mortality), kg | 3 | 3 | 3 | 3 |
| Annual N Removal, All Pathways, kg | 326 | 326 | 326 | 326 |
| % of MEP Annual Removal Target | 110% | 110% | 110% | 110% |
| Ongoing Labor Requirement (hrs/yr) | 2,050 | 5,850 | 5,850 | 12,583 |
| Labor Full Time Equivalents | 1.0 | 2.9 | 2.9 | 6.3 |
| \$/kg of N Removed, All Pathways | \$ 341 | \$ (67.11) | \$ 11.31 | \$ 11.31 |

Table 5 - Assumptions for Y1 Seed Scenarios for Long Term Implementation

| | Y1A | Y1B | Y1C | Y1D |
|-------------------------------|-----------------|------------------------|--------------------------|-------------------------|
| | Town No Sale | Town Intermed. Sale | Grower Intermed. Sale | Grower Standard Sale |
| Number of spat bags | 2,120 | 2,120 | 2,120 | 2,120 |
| Spat bag cost | \$ 6,996 | \$ 6,996 | \$ 6,996 | \$ 6,996 |
| Floating bag material cost | \$ - | \$ - | \$ - | \$ 27,930 |
| Floating bag fab labor cost | \$ - | \$ - | \$ - | \$ 26,250 |
| Bottom bag material cost | | | | \$ 55,170 |
| Bottom bag fab labor cost | | | | \$ 34,481 |
| Winter racks | 110 | 110 | 110 | 110 |
| Winter rack materials cost | \$ 22,000 | \$ 22,000 | \$ 22,000 | \$ 22,000 |
| Winter rack labor | \$ 8,910 | \$ 8,910 | \$ 12,375 | \$ 12,375 |
| Initial Deployment Labor | \$ 20,250 | \$ 20,250 | \$ 28,125 | \$ 105,281 |
| Recondition winter bags labor | | \$ 8,100 | \$ 11,250 | \$ 11,250 |
| Split Labor | \$ 13,500 | \$ 13,500 | \$ 18,750 | \$ 18,750 |
| Flip Labor | \$ 8,100 | \$ 8,100 | \$ 11,250 | \$ 19,125 |
| Remove Gear Labor | \$ 13,500 | \$ 13,500 | \$ 18,750 | \$ 31,875 |
| Y1 Grade Labor per cycle | | \$ 20,250 | \$ 28,125 | \$ 28,125 |
| Y1 Grade cycles | 0 | 1 | 1 | 1 |
| Y1 Winter Labor | \$ - | \$ 20,250 | \$ 28,125 | \$ 28,125 |
| Y1 Bag to Market | | \$ 40,500 | \$ 56,250 | |
| Y2 Bag to Market | \$ - | \$ - | \$ - | \$ 154,313 |
| Storage racks | 67 | | | 183 |
| Storage rack materials | \$ 6,667 | | | \$ 18,289 |
| Storage rack labor | \$ 2,700 | | | \$ 7,407 |
| Storage rack sq.ft. | | | | 4,572 |
| Other space sq.ft. | | | 500 | 1,000 |
| Space rental | | | \$ 6,000 | \$ 57,722 |
| Administrative hours | | 500 | 500 | 2,000 |
| Administrative labor | | \$ 39,375 | \$ 18,750 | \$ 75,000 |
| Fuel cost | | | \$ 390 | \$ 1,800 |
| NAP Coverage | | | \$ 6,563 | \$ 6,563 |
| Business insurance | | | \$ 4,000 | \$ 4,000 |
| Equipment insurance | | | \$ 4,000 | \$ 8,000 |
| Trips to wholesale | | | 4 | 20 |
| Other miles, total | | | 500 | 2,000 |
| Oyster Grader, pkg 5 | | | | \$ 38,100 |
| Generator | | | | \$ 2,000 |
| Salt water pump | | | | \$ 500 |
| Grader Float System | | | | \$ 20,000 |
| Winter deployment rafts | | \$ 2,800 | \$ 2,800 | \$ 2,800 |
| Equipment delivery costs | \$ 500 | \$ 2,000 | \$ 2,000 | \$ 4,000 |
| Number of boats | | | | 3 |
| Carolina Skiff 19DX | | | | \$ 9,620 |
| Yamaha F90LA | | | | \$ 10,405 |
| Boat Trailer | | | | \$ 2,650 |
| Number of trucks | | | | 2 |
| Chevy 4500 Reefer | | | | \$ 49,900 |
| Utility trailer | \$ 2,500 | \$ 2,500 | \$ 2,500 | \$ 2,500 |
| Totes, tools | \$ 2,000 | \$ 2,000 | \$ 2,000 | \$ 4,000 |

| | Y1 | Y2 |
|---------------------------------------|-------|------|
| Mortality | 15% | 15% |
| Target Seed/bag | 1,000 | |
| Target Oysters/bag | 600 | 250 |
| Denitrification factor (% of uptake) | 68% | 68% |
| Average Weight at Death (DW g/Oyster) | 0.500 | 1.20 |
| Deployment Weight (DW g/Oyster) | 0.02 | 1.04 |
| Ending Weight (DW g/Oyster) | 1.04 | 2.50 |

| | Base | Loaded | Load Factor |
|-------------------------|----------|----------|-------------|
| Town Labor Rate | \$ 18.00 | \$ 27.00 | 1.5 |
| Program Oversight Labor | \$ 35.00 | \$ 52.50 | 1.5 |
| Grower Labor Rate | \$ 25.00 | \$ 37.50 | 1.5 |

| | |
|---------------------------------------|----------|
| Shell N% of DW | 2.00% |
| Meat N% of live wt | 10.50% |
| MEP Target kg N | 297 |
| Cost per 1,000 Oysters | \$ 16.00 |
| Materials cost per floating bag | \$ 13.30 |
| Materials cost per bottom bag | \$ 9.00 |
| Cost of spat bag for 2-3mm seed | \$ 3.30 |
| Years of service for Gear & Equipment | 5 |
| Commercial cost of capital, 5 yr @ 8% | 21.7% |
| Winter bags/rack | 20 |
| Materials/rack | \$ 200 |
| Storage materials/rack | \$ 100 |
| Storage bags/rack | 45 |
| sq.ft. per storage rack | 25 |
| Winter racks available | 40 |
| Bags available after Y3 | 3000 |
| Storage rental | \$ 10.00 |
| Office rental | \$ 12.00 |
| Inspections per season | 6 |
| Hours per inspection | 8 |
| Report hrs | 16 |

Table 6 - Y2 Seed Scenarios for Long Term Implementation

| | Y2E | Y2F | Y2G | Y2H |
|--|--------------|------------|-----------------|-------------|
| | Town | Town | Grower | Grower |
| | Bottom Plant | Reuse | Intermed. Start | 2-3mm Start |
| Y1 Bags | 1,500 | 187 | 0 | 1,500 |
| Y2 Bags | 3,000 | 4,500 | 4,500 | 3,000 |
| Y1 Oysters Started | 1,040,000 | 187,000 | 0 | 1,040,000 |
| Y2 Oysters Started | 890,000 | 1,058,824 | 1,330,000 | 890,000 |
| Oysters Extracted (or retained by Town) | 756,500 | 900,000 | 1,130,500 | 756,500 |
| Sale Price of Program Oysters | \$ - | \$ - | \$ 0.395 | \$ 0.366 |
| Total Market Value of Program Oysters | \$ - | \$ - | \$ 446,548 | \$ 276,879 |
| Total Capital for Floating Gear | \$ 23,382 | \$ 23,054 | \$ 19,950 | \$ 23,382 |
| Labor for Fabrication of Floating Gear | \$ 18,750 | \$ 21,088 | \$ 18,750 | \$ 18,750 |
| Over-winter Gear (Fab Labor & Materials) | \$ 9,835 | \$ 54,612 | \$ - | \$ 10,938 |
| Capital for Other Equipment | \$ 7,800 | \$ 7,800 | \$ 76,575 | \$ 79,375 |
| Y1 Capital Requirement | \$ 59,767 | \$ 106,554 | \$ 115,275 | \$ 132,445 |
| Amortized Financed Gear Cost | \$ 11,953 | \$ 21,311 | \$ 28,048 | \$ 32,226 |
| Seed Cost | \$ 16,640 | \$ 2,992 | \$ 172,900 | \$ 16,640 |
| Field Labor Cost | \$ 80,595 | \$ 110,517 | \$ 143,438 | \$ 149,438 |
| Business Overhead | | | \$ 65,813 | \$ 56,479 |
| Total Annual Expenses | \$ 109,188 | \$ 134,820 | \$ 410,198 | \$ 254,783 |
| Program Oversight | \$ 3,360 | \$ 3,360 | \$ 3,360 | \$ 3,360 |
| Town Net Cost | \$ 112,548 | \$ 138,180 | \$ 3,360 | \$ 3,360 |
| Grower Net Profit | | | \$ 36,349 | \$ 22,096 |
| Net Profit % of Gross Revenue | | | 8.1% | 8.0% |
| N Removed by Uptake, kg | 161 | 132 | 185 | 161 |
| N Removed by Denitrification, kg | 109 | 89 | 125 | 109 |
| N Removed in Shells (Mortality), kg | 4 | 9 | 5 | 4 |
| Annual N Removal, All Pathways, kg | 274 | 230 | 314 | 274 |
| % of MEP Annual Removal Target | 92% | 78% | 106% | 92% |
| Ongoing Labor Requirement (hrs/yr) | 2,985 | 4,093 | 4,325 | 4,485 |
| Labor Full Time Equivalent | 1.5 | 2.0 | 2.2 | 2.2 |
| \$/kg of Target N Removed | \$ 411 | \$ 600 | \$ 11.31 | \$ 12.26 |

Table 7 - Assumptions for Y2 Seed Scenarios for Long Term Implementation

| | Y2E | Y2F | Y2G | Y2H | Y1 | Y2 | Y3 |
|---------------------------------------|-------------------|------------|------------------------|--------------------|----------|----------|-------------|
| | Town Bottom Plant | Town Reuse | Grower Intermed. Start | Grower 2-3mm Start | | | |
| Number of spat bags | 1,040 | 187 | 0 | 1,040 | | | |
| Spat bag cost | \$ 3,432 | \$ 617 | \$ - | \$ 3,432 | | | |
| Floating bags material cost | \$ 19,950 | \$ 22,437 | \$ 19,950 | \$ 19,950 | | | |
| Floating bags fab labor cost | \$ 18,750 | \$ 21,088 | \$ 18,750 | \$ 18,750 | | | |
| Winter racks | 35 | 194 | 0 | 35 | | | |
| Winter rack cost | \$ 7,000 | \$ 38,870 | \$ - | \$ 7,000 | | | |
| Winter rack labor | \$ 2,835 | \$ 15,742 | \$ - | \$ 3,938 | | | |
| Initial Deployment Labor | \$ 27,270 | \$ 31,637 | \$ 42,188 | \$ 37,875 | | | |
| Recondition winter bags labor | \$ 4,050 | \$ 12,655 | \$ - | \$ 5,625 | | | |
| Split Labor | \$ 6,750 | \$ 842 | \$ - | \$ 9,375 | | | |
| Flip Labor | \$ 12,150 | \$ 12,655 | \$ 16,875 | \$ 16,875 | | | |
| Remove Gear Labor | \$ 20,250 | \$ 21,092 | \$ 28,125 | \$ 28,125 | | | |
| Y1 Winter Labor | \$ 10,125 | \$ 31,637 | \$ - | \$ 14,063 | | | |
| Y2 to Market Labor | | | \$ 56,250 | \$ 37,500 | | | |
| Storage racks | 67 | 0 | 100 | 67 | | | |
| Storage rack materials | \$ 6,667 | \$ - | \$ 10,000 | \$ 6,667 | | | |
| Storage rack labor | \$ 2,700 | \$ - | \$ 4,050 | \$ 2,700 | | | |
| Storage rack sq.ft. | | | 2,500 | 1,667 | | | |
| Other space sq.ft. | | | 500 | 500 | | | |
| Space rental | | | \$ 31,000 | \$ 22,667 | | | |
| Administrative hours | | | 500 | 500 | | | |
| Administrative labor | | | \$ 18,750 | \$ 18,750 | | | |
| NAP Coverage | | | \$ 6,563 | \$ 6,563 | | | |
| Business insurance | | | \$ 2,500 | \$ 2,500 | | | |
| Business misc | | | \$ 3,000 | \$ 2,000 | | | |
| Equipment insurance | | | \$ 4,000 | \$ 4,000 | | | |
| Equipment delivery costs | \$ 500 | \$ 500 | \$ 2,000 | \$ 2,000 | | | |
| Carolina Skiff 19DX | | | \$ 9,620 | \$ 9,620 | | | |
| Yamaha F90LA | | | \$ 10,405 | \$ 10,405 | | | |
| Boat Trailer | | | \$ 2,650 | \$ 2,650 | | | |
| Winter rafts | \$ 2,800 | \$ 2,800 | \$ - | \$ 2,800 | | | |
| Chevy 4500 Reefer | | | \$ 49,900 | \$ 49,900 | | | |
| Utility trailer | \$ 2,500 | \$ 2,500 | \$ - | \$ - | | | |
| Totes, tools | \$ 2,000 | \$ 2,000 | \$ 2,000 | \$ 2,000 | | | |
| Mortality | | | | | 15% | 15% | 15% |
| Seed cost/1,000 oysters | | | | | \$ 16 | \$ 130 | |
| Target Seed/bag | | | | | 1,000 | | |
| Target Oysters/bag | | | | | 600 | 250 | 200 |
| Denitrification factor (% of uptake) | | | | | 68% | 68% | 68% |
| Average Weight at Death (DW g/Oyster) | | | | | 0.250 | 1.20 | 2.50 |
| Deployment Weight (DW g/Oyster) | | | | | 0.020 | 0.49 | 2.10 |
| Ending Weight (DW g/Oyster) | | | | | 0.49 | 2.1 | 3.5 |
| | | | | | Base | Loaded | Load Factor |
| Town Labor Rate | | | | | \$ 18.00 | \$ 27.00 | 1.5 |
| Program Oversight Labor | | | | | \$ 35.00 | \$ 52.50 | 1.5 |
| Grower Labor Rate | | | | | \$ 25.00 | \$ 37.50 | 1.5 |
| Shell N% of DW | | | | | 2.00% | | |
| Meat N% of live wt | | | | | 10.50% | | |
| MEP Target kg N | | | | | 297 | | |
| Materials cost per bag | | | | | \$ 13.30 | | |
| Cost of spat bag for 2-3mm seed | | | | | \$ 3.30 | | |
| Years of service for Gear & Equipment | | | | | 5 | | |
| Commercial cost of capital, 5 yr @ 8% | | | | | 21.7% | | |
| Winter bags/rack | | | | | 20 | | |
| Materials/rack | | | | | \$ 200 | | |
| Storage materials/rack | | | | | \$ 100 | | |
| Storage bags/rack | | | | | 45 | | |
| sq.ft. per storage rack | | | | | 25 | | |
| Winter racks available | | | | | 40 | | |
| Bags available after Y3 | | | | | 3000 | | |
| Storage rental | | | | | \$ 10.00 | | |
| Office rental | | | | | \$ 12.00 | | |
| Inspections per season | | | | | 6 | | |
| Hours per inspection | | | | | 8 | | |
| Report hrs | | | | | 16 | | |

E. Gear Layout for Long Term Implementation

The overall footprint of the required gear and the timing of gear installation are both important considerations. Figure 39 illustrates the gear footprint required for a full-scale deployment as well as the time during the growing season when different phases of installation occur. The estimates for the number of floating bags required are made by combining a consideration of the volume requirement for the oysters with the size and number of bags in the plots that would be used.

The Y1 and Y2 scenarios have important timing differences. The Y2 scenarios require more total bags to be deployed, and the bags would be installed earlier in the season. By June 15, two-thirds of the one-acre site is filled, and the entire acre is used starting August 15 in the Y2 scenarios. For Y1 oysters, two-thirds of the site would be filled by approximately August 1, and the entire site would not be used until October 1, well past peak season. The dates shown for when the field would be expanded are approximate, and would depend on actual growth of the oysters. It is possible they would shift earlier or later by as much as 7 to 10 days.

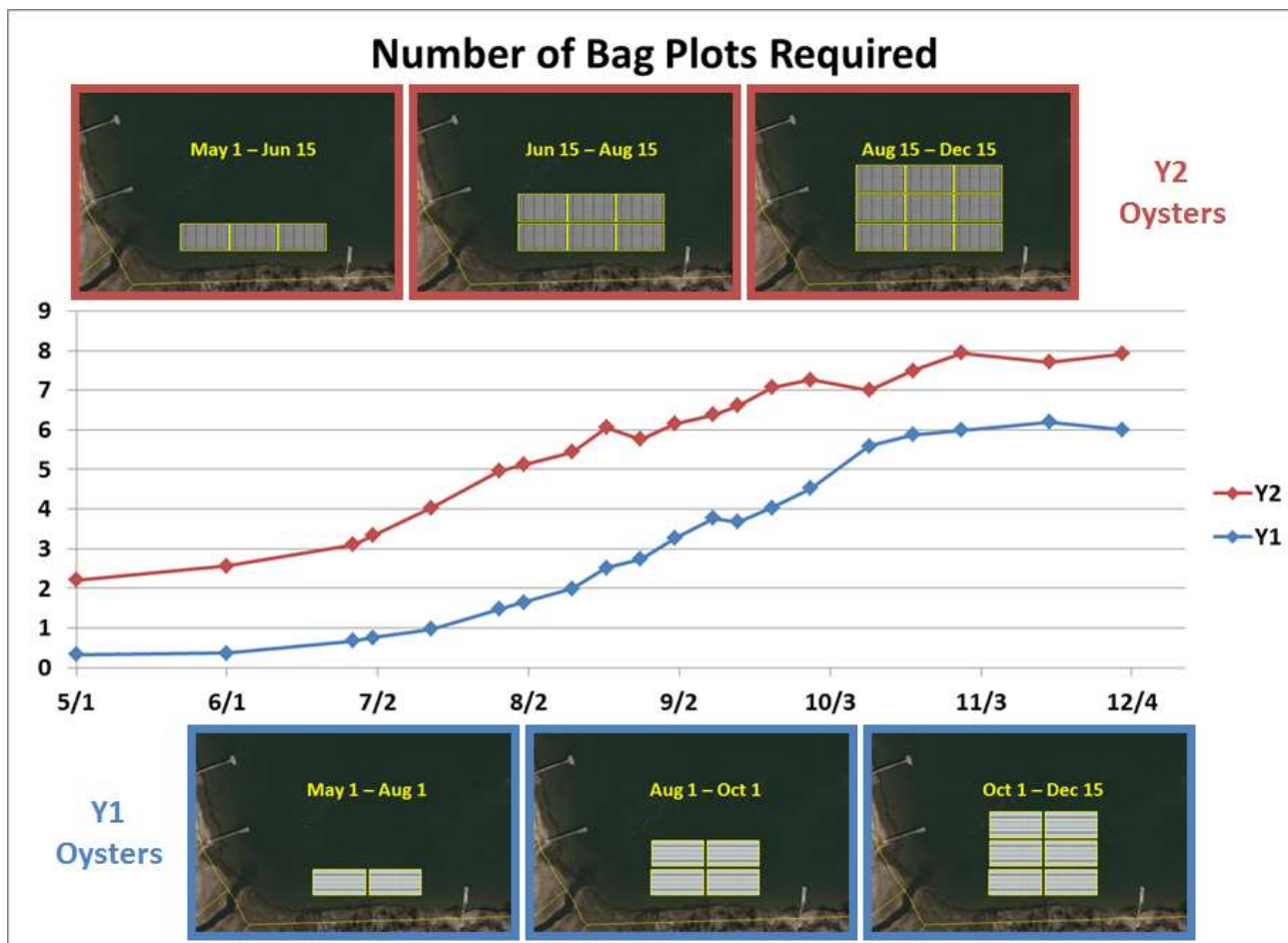


Figure 39 - Installation of Gear Throughout the Growing Season

F. Details of Plot Configurations

The first-year demonstration project footprint used a proven heavy-duty long line layout and achieved a density of approximately 3,600 bags per acre. Recognizing that Lonnie’s Pond is well sheltered, it is possible to achieve a slightly higher-density layout of 4,800 bags per acre by simply locating the adjacent strings closer together. The layout of a 500 bag plot is shown below. Nine such plots could be placed inside a one acre field, achieving a layout density of 4,500 bags per acre. This bag configuration has been used for all Y1 scenarios.

An alternative configuration used in estuaries of other towns involves stringing bags in rows between perimeter lines. The bags are easily flipped by a worker traveling in between the rows. A typical configuration would involve placing 550 bags in a 50 foot x 92 foot plot as shown below. Nine such plots could be placed inside a one acre field, achieving a layout density of 4,950 bags per acre. This bag configuration is used for Y2 scenarios.

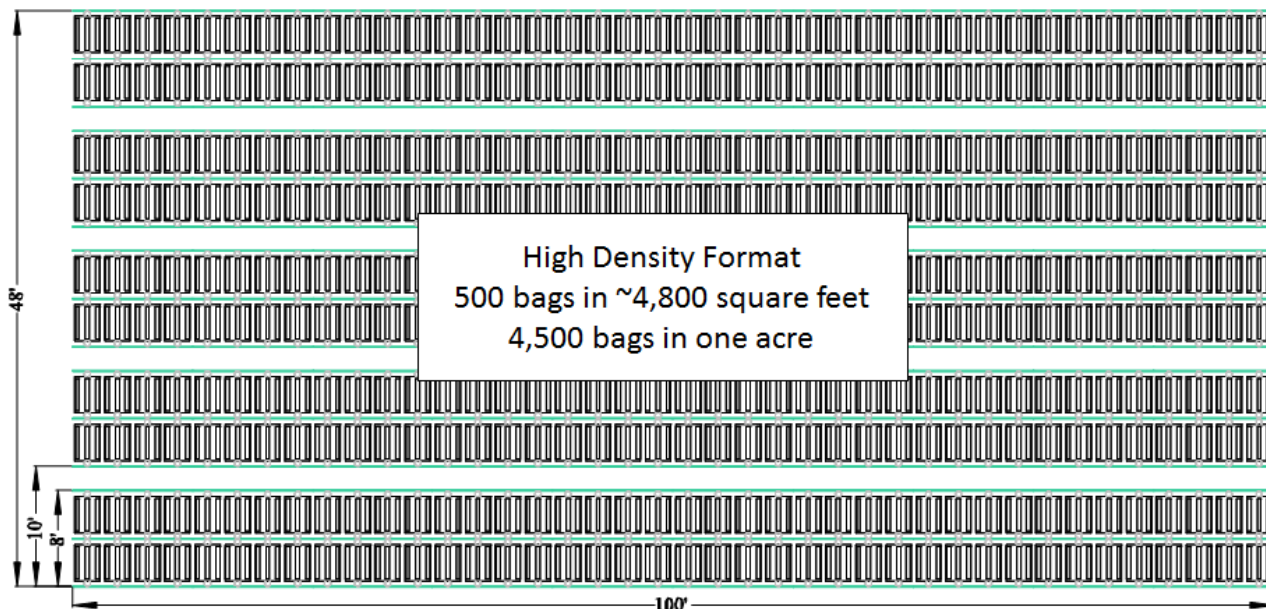


Figure 40 - Layout for Plots with 500 Floating Bags Each for Y1 Installations

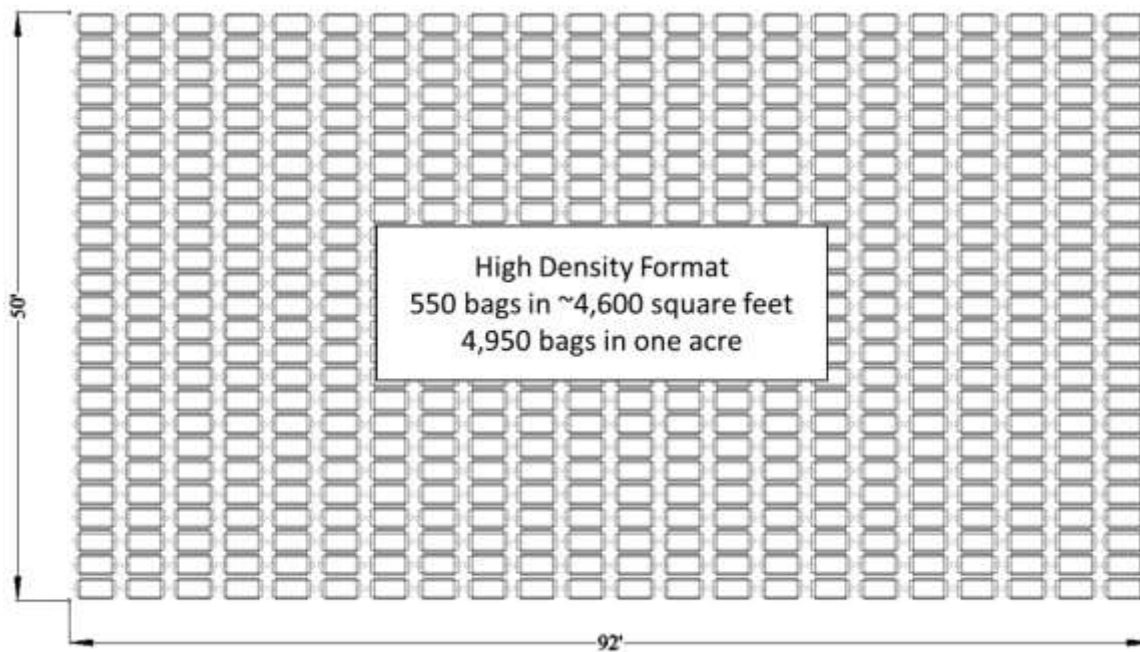


Figure 41 - Layout for Plots with 550 Floating Bags Each for Y2 Installation Scenarios

10. Second Year Program for Lonnie's Pond Demonstration

A. General

The purpose of the second-year demonstration is to further refine a long-term implementation plan that uses shellfish to remove nitrogen in Lonnie's Pond, and continue to collect data needed to obtain regulatory approvals for the use of shellfish aquaculture to achieve nitrogen removal goals. Eight possible scenarios were presented in Section 9. These scenarios are based on the findings from the first year of the project, and include both Y1 and Y2 oysters.

The second-year demonstration in the planning stages for Lonnie's Pond involves deploying oysters within four separate plots, and initiating a scientific evaluation of quahogs for nitrogen removal. This configuration will provide additional information about the nitrogen uptake and denitrification effects of both Y1 and Y2 oysters as well as quahog growth rates, nitrogen-uptake and enhanced denitrification effects.

The following activities will be undertaken during the second year of the demonstration project:

- Assess the growth of Y1 oysters starting at 2 to 3 mm and targeting an average of 1 gram of dry tissue weight in a single growing season with a final grow-out stocking density of 600 oysters per bag;
- Assess the growth of Y1 oysters starting at 2 to 3 mm and targeting an average of 1 gram of dry tissue weight in a single growing season with a final grow-out stocking density of 1,000 oysters per bag;
- Assess the growth of Y2 oysters from intermediate seed with an average dry tissue weight of 0.5 grams and targeting market-ready oysters with a dry tissue weight averaging 2.5 grams with a final grow-out stocking density of 250 oysters per bag;
- Assess the growth of Y1 and Y2 oysters using floating bag densities achieving up to 4,950 bags per acre;
- Assess the growth and survival rates and nitrogen content of quahogs in Lonnie's Pond;
- Work with SMAST to obtain food availability, biodeposition, and denitrification enhancement measurements from suitable locations before, during, and after the critical impairment period of July and August; and determine the amount of difference, if any, in the denitrification rate if maintenance is done on foot as opposed to by boat;
- Evaluate public and abutter acceptance;
- Evaluate acceptance and compatibility with other local growers and commercial shellfish harvesters;
- Review the options with DMF for sale by the Town of intermediate seed; and
- Identify any permitting issues for a commercial site license (grant) in Lonnie's Pond.

This second year of the three-year demonstration project involves deploying a system that is approximately half the size of the long-term implementation plan. This demonstration year will install approximately 168,000 Y2 oysters and 950,000 Y1 oysters distributed among four plots. Each plot will have 500 bags and be similar in size and shape to that envisioned for full-scale implementation. A fifth plot not influenced by the oyster plots will be bottom-planted with 100,000 seed quahogs made uniquely identifiable prior to planting. The purpose of each plot is to monitor the time dependence of nitrogen removal rates via uptake into biomass, biodeposition, and denitrification for the following:

- Plot A: 140,000 Y2 oysters at an initial stocking density of approximately 280 oysters per bag, adding biodeposits on top of the same area used by last year's site;

- Plot B: 60,000 Y2-L oysters (grown in Lonnie’s in 2016) at an initial stocking density of approximately 150 oysters per bag and 28,000 Y2 oysters at an initial stocking density of approximately 280 oysters per bag, over deeper water and softer bottom than last year’s site;
- Plot C: 590,000 Y1 oysters at a stocking density of approximately 1,000 oysters per bag, over bottom similar to that used by last year’s site;
- Plot D: 360,000 Y1 oysters at a stocking density of 600 oysters per bag over deeper water and softer bottom than last year’s site; and
- Plot Q: 100,000 15 to 20 mm quahogs at a suitable location to be determined.

This scale of demonstration will provide the second year of evidence for achievable rates of nitrogen removal through uptake during oyster growth as well as nitrogen removal through enhanced denitrification. It will also provide a preliminary assessment of the ability of quahogs to contribute to nitrogen removal and sediment improvement. Discussions during the first year of the demonstration project have raised interest in evaluating the ability of quahogs to contribute to achieving nitrogen removal targets for Lonnie’s Pond. An initial population of 100,000 quahogs will be placed in a suitable location and their growth, mortality, and nitrogen content will be assessed during the 2017 growing season. Conducting a second year of this demonstration at half-scale allows details regarding monitoring requirements for regulatory approvals to be refined with MassDEP.

Another feature of installing the oyster fields as configured for the second-year demonstration is that it will give the community an opportunity to preview the visual and operational impacts that are comparable to a full-scale program. Demonstrating at this scale also reduces any uncertainty for the Town as well as potential growers. The results of this second year will verify key parameters that are important to the entity implementing this approach over the long-term.

The area that will be used for the second year of the project is shown in Figure 42. The location for the quahog field will be determined with the Town of Orleans shellfish constable.



Figure 42 - Layout of floating gear for oyster plots anticipated during the second year of the demonstration project. The location of the quahog site is still to be determined.

B. Seed Procurement and Installation Steps

Both oyster and quahog seed will be procured as follows:

- A population of 100,000 15 to 20 mm quahogs will be ordered from ARC; and
- Arrangements will be made for an early May delivery of 950,000 oyster seed (2 to 3 mm) and 168,000 intermediate oyster seed.

An additional 1,200 floating bags will be needed to support the second year of the project, and the materials for these bags and reconditioning of the overwintered bags will be ordered. Standard procurement practices will be used to ensure competitive bids are received.

A suitable experimental site for quahogs will be identified in consultation with the Shellfish Constable and SMAST. Once quahogs are available, the initial size, weight, and nitrogen content will be determined, they will be marked for identification, and then they will be bottom planted. Measurements will be taken throughout the growing season to evaluate growth rate and mortality, and nitrogen-content will be measured again at the end of the season.

The more favorable Y2 scenarios described in Section 9 involve deploying intermediate seed with an average dry tissue weight of about 0.5 grams per oyster on May 1 at an initial stocking density that targets a final population of 250 per bag. To achieve this population density, the initial stocking density will be 280 oysters per bag to account for 15 percent mortality. The assumption of dry weight per individual is based on expected availability from suppliers for the 2017 growing season. As soon as they are available, a population of 140,000 intermediate seed oysters will be used to stock 500 bags at 280 individuals per bag to occupy Plot A. This will provide a system for monitoring the outcome of long term strategy Y2G, and will also support an analysis of increased denitrification rates due to multi-year accumulation of biodeposits from Y2 oysters.

As soon as the water temperature rises sufficiently, expected by mid-April, the oysters that were overwintered at the end of 2016 will be brought to the surface and removed from the bags that were submerged. Shells of dead oysters will be separated out for a mortality assessment. Total live weights will be measured, and representative samples of individuals will be weighed and measured to assess growth during the winter period. These oysters will be used as part of the second-year demonstration.

The population of approximately 60,000 oysters that was grown as Y1 in 2016 will be grown for a second year in 2017. These oysters are larger than the intermediate seed available from other suppliers. These oysters are identified as Y2-L because they were grown as Y1 in Lonnie's Pond and are consequently larger when they enter their second year of growth. These oysters have an average dry tissue weight of about 1 gram, so the equivalent initial stocking density would be 150 oysters per bag to achieve the projected Y2 performance comparable to placing intermediate seed with a 0.5g dry tissue weight at an initial stocking density of 280 per bag. These 60,000 Y2-L oysters will be used to stock 400 bags at a density of 150 per bag. These bags will be deployed in Plot B, and the plot will be filled out with 100 bags of 280 intermediate seed oysters having an initial dry weight averaging 0.5g. This plot B, along with Plot A, will support monitoring related to long term strategies Y2E, Y2F, and Y2H.

The 950,000 early-start 2 to 3 mm seed will be distributed into spat bags at densities of about 1,000 per bag, resulting in 950 loaded spat bags. Reitsma (NACE 2017) has reported excellent success placing two spat bags in one floating bag, and this recommendation will be followed for the initial growth period, thus requiring a deployment of 475 floating bags, which will take place at Plot D.

When the oysters have grown to a point where they can be retained in a floating bag with 6 mm mesh, they will be removed from the spat bags, which will be cleaned and stored for reuse. This is expected to occur in the beginning of July. When the oysters have doubled in volume, expected to be by the end of July, they will be distributed into 500 floating bags at approximately 700 per bag (targeting 600 per bag at an 85 percent survival rate), which will be placed at Plot C, and 500 floating bags at about 1,200 per bag (targeting 1,000 per bag at an 85 percent survival rate) which will be placed at Plot D. These plots will support monitoring related to the long-term strategies Y1A, Y1B, Y1C, Y1D, Y2E, and Y2H. Plot D will also support an analysis of increased denitrification rates due to multi-year accumulation of biodeposits from Y1 oysters.

C. Options for Overwintered Third Year Oysters

As detailed in Section 9, there is no economically favorable long term scenario that involves retaining oysters that are older than Y2 inside Lonnie's Pond. At \$600/kg, the Y2F strategy has the highest cost per kg of nitrogen removed of all the envisioned strategies. The main cost driver for the Y2F scenario that retains oysters over several years is the need to overwinter a large number of bags. In addition, the projected new growth per unit volume of gear occupied slows down as the oyster gets older. The space required to hold oysters in floating bags exceeds the area available in Lonnie's Pond. For this reason, oysters that are larger than Y2 cannot meet the TMDL or MEP nitrogen reduction targets within Lonnie's Pond.

Because the oysters that were Y2 for the 2016 project are entering their third year of growth, they should be more resistant to predators and disease. It is recommended that these now Y3 oysters be bottom planted in an area with suitable bottom outside Lonnie's Pond where they can be studied to monitor mortality and growth if desired. This would help the Town assess the feasibility of establishing bottom planted oyster beds as part of an overall strategy for improving water quality. For example, bottom planting at Kent's Point could provide valuable information for the viability study currently planned at this location, allowing predation to be monitored over the spring, summer, and fall of 2017, before the remote-set has grown to a suitable size for bottom-planting. This approach would first be discussed with the Shellfish Working Group and other stakeholders.

D. Budget for Second Year of Lonnie's Pond Demonstration

The budget for the second year spans two Town fiscal years (2017 and 2018) for the Lonnie's Pond demonstration project. The details of the costs associated with operating the second year of the demonstration program through the end of the Town's 2017 fiscal year ending June 30, 2017 are shown in Table 8.

After carrying forward this credit, an additional \$192,000 is required to complete the second year of the demonstration and an additional \$152,000 is needed for the portion of the third year of the demonstration that occurs during FY2018. The total FY2018 budget is \$344,000, which includes both completing the second year and starting the anticipated third year of the demonstration. Table 9 details the costs included in the FY2018 budget.

**Table 8 - Fiscal Year 2017 for Second Year of the Lonnie's Pond
 Demonstration Cost for Second Year through June 30, 2017**

| Description | Amount |
|---------------------------------------|------------------|
| Project Management | \$21,000 |
| 2 to 3mm oyster seed | \$15,200 |
| Intermediate oyster seed | \$31,920 |
| 15 to 20mm quahog seed | \$5,000 |
| Spat bags | 3,140 |
| Materials for 1,200 bags and lines | \$15,960 |
| Materials to recondition 800 bags | \$2,400 |
| Labor for 1,200 new bags and lines | \$16,00 |
| Labor to recondition 800 winter bags | \$4,000 |
| Field sampling and sample prep | \$7,200 |
| N analysis | \$3,900 |
| Materials and supplies for sampling | \$3,180 |
| Oyster Deploy Labor | \$20,000 |
| Quahog Deploy Labor | \$2,000 |
| Flip and Maintain Labor | \$4,000 |
| Engineering | \$27,300 |
| Contingency | \$15,500 |
| Total for Demo Year 2 – Part 1 | \$197,700 |

Table 9 - Fiscal Year 2018 Overlapping Second and Third Year of the Lonnie’s Pond Demonstration Costs to Complete Second Year Demonstration Project by December 30, 2017

| Description | Amount |
|---------------------------------------|------------------|
| Project Management | \$24,600 |
| Field sampling and sample prep | \$24,000 |
| Materials and supplies for sampling | \$6,400 |
| N analysis | \$7,800 |
| Additional overwinter gear | \$3,200 |
| First split Labor | \$2,000 |
| Second split Labor | \$2,000 |
| Flip and Maintain Labor | \$10,000 |
| Overwintering Labor | \$10,000 |
| Y2 Bottom Planting Labor | \$4,000 |
| Permitting | \$25,000 |
| Year 2 Final Report | \$30,000 |
| Public Engagement | \$6,000 |
| Engineering | \$27,900 |
| Contingency | \$9,000 |
| Total for Demo Year 2 – Part 2 | \$192,000 |

Anticipated costs to begin third year demonstration project and operate through June 30, 2018

| Description | Amount |
|--|------------------|
| Project Management | \$23,400 |
| 2 to 3mm oyster seed | \$33,920 |
| 15 to 20mm quahog seed | \$10,000 |
| Materials for 1,000 bags and lines | \$13,300 |
| Materials to recondition 1,000 winter bags | \$980 |
| Recondition 1,000 winter bags | \$5,000 |
| Full Scale Y1X Deployment Labor | \$30,000 |
| Engineering | \$23,700 |
| Contingency | \$11,700 |
| Total for Demo Year 3 | \$152,000 |

11. Next Steps

- Decision to proceed with the second year of the Lonnie's Pond demonstration (decision needed by early March if the demonstration is to continue, otherwise it may not be possible to obtain seed for an early start and materials for floating bags);
- Permitting for the second-year demonstration (Request for Determination of Applicability with Conservation Commission);
- Purchasing and assembly of gear and shellfish seed; and
- Work with SMAST to finalize the monitoring program.

Implementing the second year of the Lonnie's Pond demonstration requires a Request for Determination of Applicability decision from the Conservation Commission, purchasing seed and gear, assembling 1,200 floating bags, bringing up the 800 bags of shellfish overwintered in 2016, and working with SMAST to finalize the experimental program. Funding for these tasks has been authorized by both May 2016 Town Meeting and a town-wide ballot vote in October 2016.

A decision to proceed in early March by the Board of Selectmen is important to the successful implementation of this proposed program.

12. References

Bricker, S.B., Ferreira, J.G., Zhu, C., Rose, J.M., Galimany, E., Wikfors, G., Saurel, C., Miller, R.L., Wands, J., Trowbridge, P. and Grizzle, R., 2015. An Ecosystem Services Assessment using bioextraction technologies for removal of nitrogen and other substances in Long Island Sound and the Great Bay/Piscataqua Region Estuaries. *NCCOS Coastal Ocean Program Decision Analysis Series*, (194).

Burkholder, J.M. and S.E. Shumway. 2011. Bivalve shellfish aquaculture and eutrophication. In S.E. Shumway, *Shellfish Aquaculture and the Environment*. 155-215. Wiley-Blackwell.

Carmichael, R.H., Walton, W. and Clark, H., 2004. Remediation of eutrophication by oysters, *Crassostrea virginica*: use of stable isotopes and empirical data from oysters grown in estuaries receiving different N loads. *Cape Cod's Barnstable County Cooperative Extension, Cape Cod, MA*.

Clark, H., 2007. Lonnie's Pond Shellfish Aquaculture Assessment Report. Prepared for Cape Cod Cooperative Extension.

Higgins, C.B., Tobias, C., Piehler, M.F., Smyth, A.R., Dame, R.F., Stephenson, K. and Brown, B.L., 2013. Effect of aquacultured oyster biodeposition on sediment N₂ production in Chesapeake Bay. *Marine Ecology Progress Series*, 473, pp.7-27.

Higgins, C.B., Stephenson, K. and Brown, B.L., 2011. Nutrient bioassimilation capacity of aquacultured oysters: quantification of an ecosystem service. *Journal of Environmental Quality*, 40(1), pp.271-277.

Howes, B., R. Samimy, D. Schlezinger, E. Eichner, S. Kelley, J. Ramsey, and P. Detjens. 2006. Massachusetts Estuaries Report: Linked Watershed-Embayment Model to Determine Critical Nitrogen Loading Thresholds for the Pleasant Bay System, Orleans, Chatham, Brewster and Harwich, Massachusetts

Howes, B., D. Schlezinger, R. Samimy, J. Benson, S. Sampieri, M. Labrie, A. Unruh and Mancuso, P., 2017. Draft Final Lonnie's Pond Shellfish Demonstration Project Year 1 Monitoring Summer/Fall 2016 Oyster Deployment

Humphries, A.T., Ayvazian, S.G., Carey, J.C., Hancock, B.T., Grabbert, S., Cobb, D., Strobel, C.J. and Fulweiler, R.W., 2016. Directly Measured Denitrification Reveals Oyster Aquaculture and Restored Oyster Reefs Remove Nitrogen at Comparable High Rates. *Frontiers in Marine Science*, 3, p.74.

Grizzle, R.E., Ward, K.M., Peter, C.R., Cantwell, M., Katz, D. and Sullivan, J., 2016. Growth, morphometrics and nutrient content of farmed eastern oysters, *Crassostrea virginica* (Gmelin), in New Hampshire, USA. *Aquaculture Research*.

Kellogg, M.L., Smyth, A.R., Luckenbach, M.W., Carmichael, R.H., Brown, B.L., Cornwell, J.C., Piehler, M.F., Owens, M.S., Dalrymple, D.J. and Higgins, C.B., 2014. Use of oysters to mitigate eutrophication in coastal waters. *Estuarine, Coastal and Shelf Science*, 151, pp.156-168.

Kellogg, M.L., Cornwell, J.C., Owens, M.S. and Paynter, K.T., 2013. Denitrification and nutrient assimilation on a restored oyster reef. *Marine Ecology Progress Series*, 480, pp.1-19.

Luckenbach, M. 2013. "Evaluation of the use of shellfish as a method of nutrient reduction in the Chesapeake Bay" *Chesapeake Bay Program Science and Technical Advisory Committee Publication #13-005* (2013): 65pp.

Nelson, K.A., Leonard, L.A., Posey, M.H., Alphin, T.D. and Mallin, M.A., 2004. Using transplanted oyster (*Crassostrea virginica*) beds to improve water quality in small tidal creeks: a pilot study. *Journal of Experimental Marine Biology and Ecology*, 298(2), pp.347-368.

Newell, R.I., Fisher, T.R., Holyoke, R.R. and Cornwell, J.C., 2005. Influence of eastern oysters on nitrogen and phosphorus regeneration in Chesapeake Bay, USA. In *The comparative roles of suspension-feeders in ecosystems* (pp. 93-120). Springer Netherlands.

Newell, R.I., Cornwell, J.C. and Owens, M.S., 2002. Influence of simulated bivalve biodeposition and microphytobenthos on sediment nitrogen dynamics: a laboratory study. *Limnology and Oceanography*, 47(5), pp.1367-1379.

Newell, R.I. and E.W. Koch. 2004. Modeling seagrass density and distribution in response to changes in turbidity stemming from bivalve filtration and seagrass sediment stabilization. *Estuaries* 27(5):793-806.

Newell, R.I., and S.J. Jordan. 1983. Preferential ingestion of organic material by the American oyster *Crassostrea virginica*. *Marine Ecology Progress Series* 13, 47-53.

Nizzoli, D., Welsh, D.T., Fano, E.A. and Viaroli, P., 2006. Impact of clam and mussel farming on benthic metabolism and nitrogen cycling, with emphasis on nitrate reduction pathways. *Marine Ecology Progress Series*, 315, pp.151-165.

Officer, C.B., Smayda, T.J. and Mann, R., 1982. Benthic filter feeding: a natural eutrophication control. *Marine ecology progress series*, 9(2), pp.203-210.

Porter, E.T., Cornwell, J.C. and Sanford, L.P., 2004. Effect of oysters *Crassostrea virginica* and bottom shear velocity on benthic-pelagic coupling and estuarine water quality. *Marine Ecology Progress Series*, 271, pp.61-75.

Powell, E.N., Hofmann, E.E., Klinck, J.M. and Ray, S.M., 1992. Modeling oyster populations: I. A commentary on filtration rate. Is faster always better?.

Reitsma J., D. Murphy and A. Franklin. 2013. Shellfish Nitrogen Content from Coastal Waters of Southeastern Massachusetts, Cape Cod Cooperative Extension and Woods Hole Sea Grant.

Reitsma, J., Murphy, D.C., Archer, A.F. and York, R.H., 2017. Nitrogen extraction potential of wild and cultured bivalves harvested from nearshore waters of Cape Cod, USA. *Marine Pollution Bulletin*.

Sisson, M., Kellogg, M.L., Luckenbach, M.W., Lipcius, R., Colden, A., Cornwell, J.C. and Owens, M., 2011. Assessment of oyster reefs in Lynnhaven River as a Chesapeake Bay TMDL best management practice. *Final Report to the US Army Corps of Engineers, Norfolk*.

Tenore, K. and W. Dunstan. 1973. Comparison of Feeding and Biodeposition of Three Bivalves at Different Food Levels. *Marine Biology* 21.3 pp.190-195.