



# Nauset Estuary Dredging Stakeholder Meeting



Stakeholder Meeting  
January 13, 2020

# Agenda

- Introductions
- Opening Remarks
- Task 12 Update – Field Investigations & Agency Coordination
  - a. Sediment coring – physical & chemical properties
  - b. Shellfish survey
  - c. Agency coordination (NHESP, NOAA NMFS, USF&WS)
  - d. Red tide pilot project
- Task 11 Update – Establish MOU, MEPA SRP, and NESG Meetings
  - a. MOU Revisions
  - b. SRP Review
- Schedule
- Next steps



# Task 12 – Sediment Sampling

Jul. 29, 2019 – 8 new cores collected

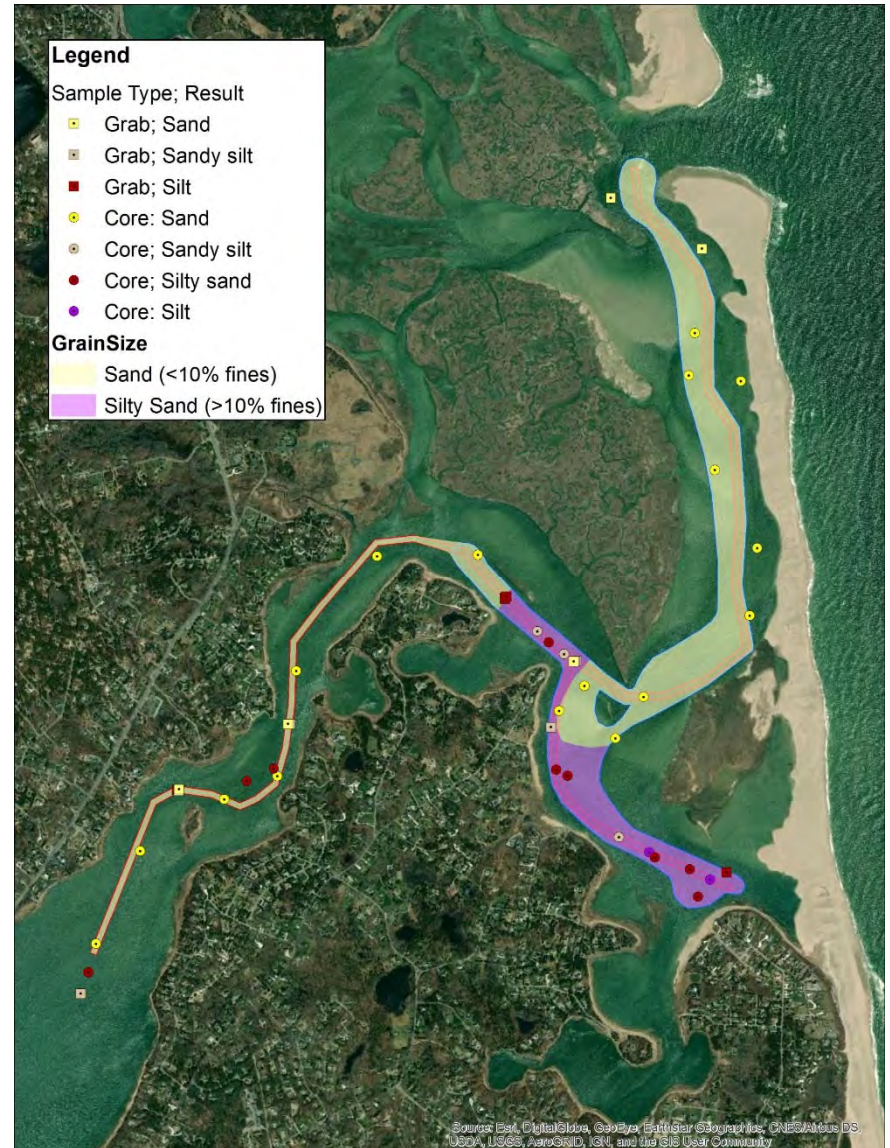
- Hopkins Island (2)
- Stoney Island (2)
- Priscilla Landing spur (4)

## Physical Characteristics

- Hopkins Island 90% sand
- Stoney Island 77% sand
- Priscilla Landing spur 52% - 87% sand

## Chemical Characteristics (fines only)

- Metals, PAH, EPH, PCB, VOC, and pesticide concentrations all below thresholds for upland placement



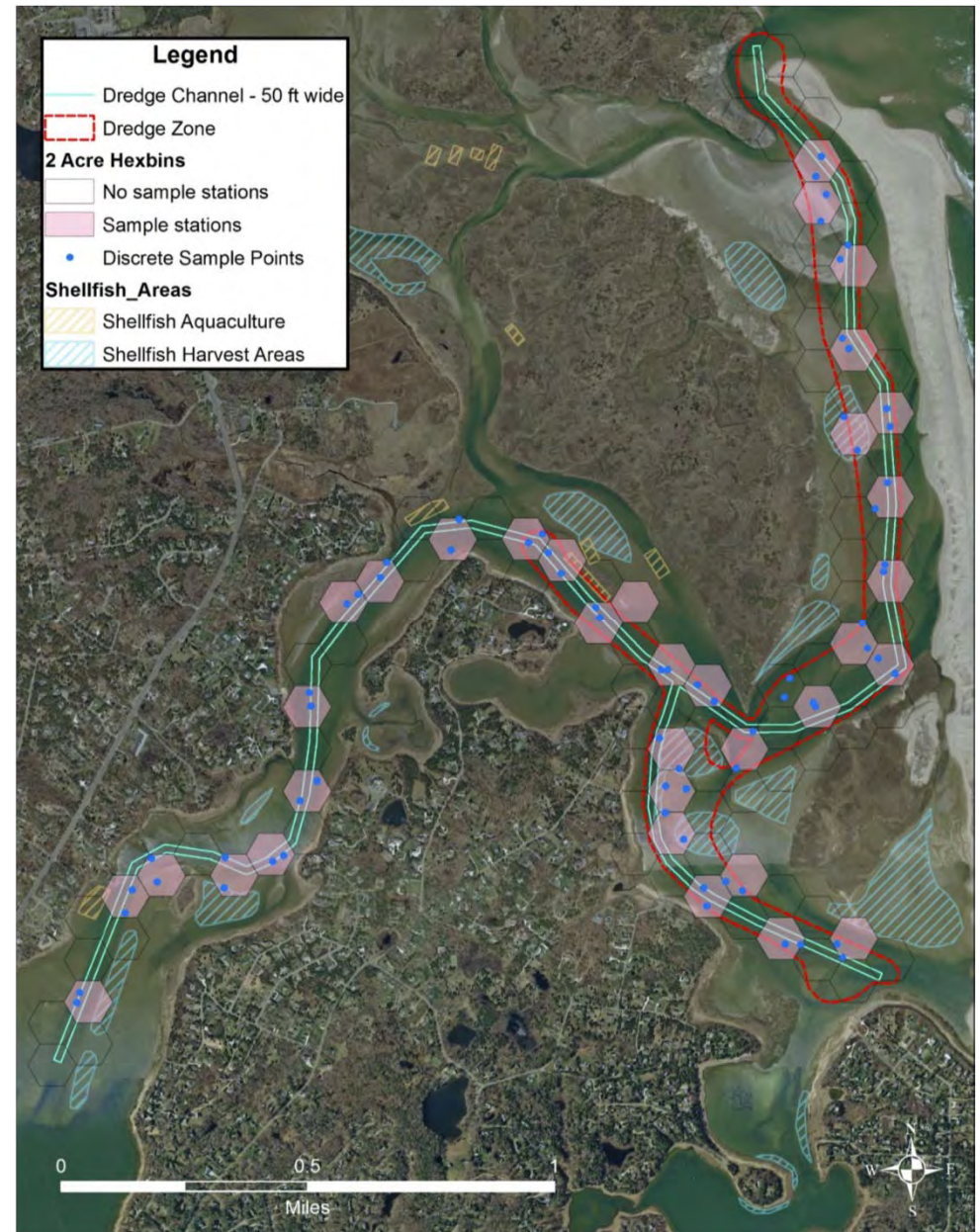
# Task 12.2 – Shellfish Survey

Aug. 19, 2019 – Sampling plan submitted to DMF

Aug. 21, 2019 – Approval of sampling plan

Plan summary:

- 70 sample sites
- Representative of channel and dredge zone
- Sample using bull rake from boat; 4 minutes at each site
- ID number, size, and species
- Underwater photos



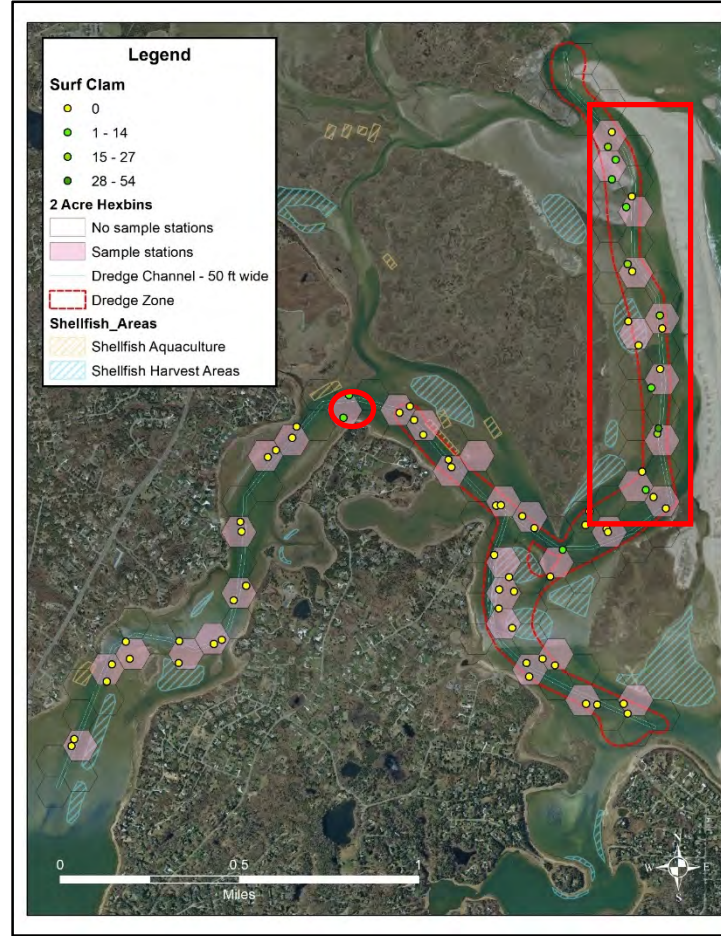
# Task 12.3 – Shellfish Survey

Species	Individuals Observed	Net Density / ft <sup>3</sup> *
Bay Scallop	4	0.01
Blue Mussel	24	0.08
Soft-Shelled Clam	2	0.01
Surf Clam	31	0.11
Quahog	269	0.96



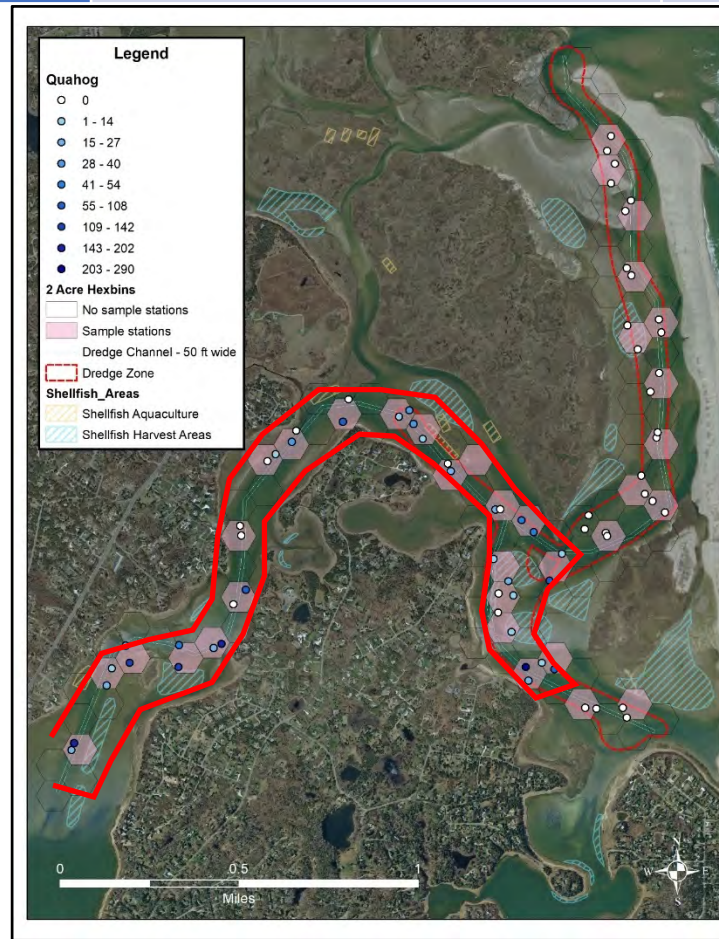
# Task 12.3 – Shellfish Survey

Species	Individuals Observed	Net Density / ft <sup>3</sup> *
Bay Scallop	4	0.01
Blue Mussel	24	0.08
Soft-Shelled Clam	2	0.01
Surf Clam	31	0.11
Quahog	269	0.96



# Task 12.3 – Shellfish Survey

Species	Individuals Observed	Net Density / ft <sup>3</sup> *
Bay Scallop	4	0.01
Blue Mussel	24	0.08
Soft-Shell Clam	2	0.01
Surf Clam	31	0.11
Quahog	269	0.96

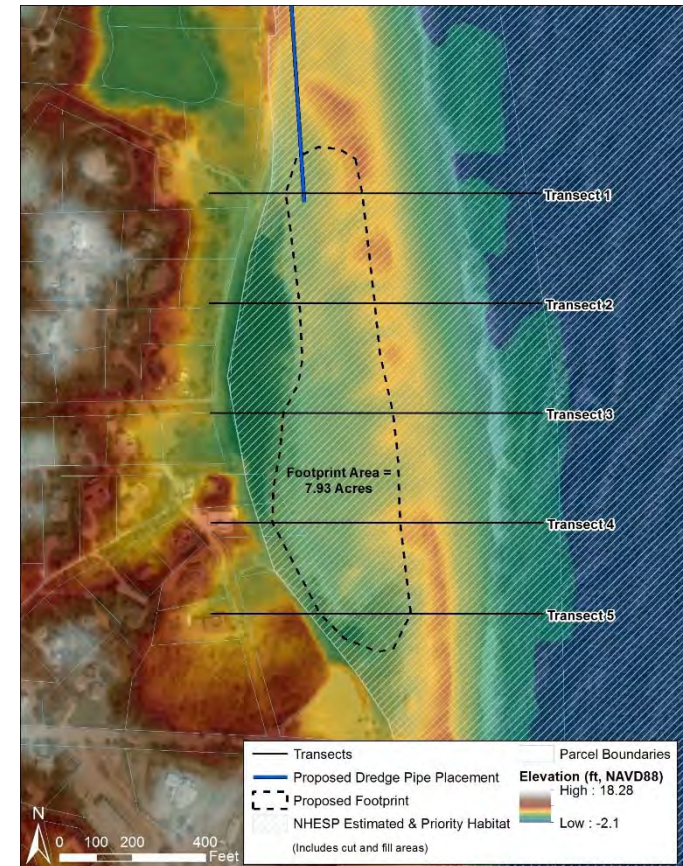
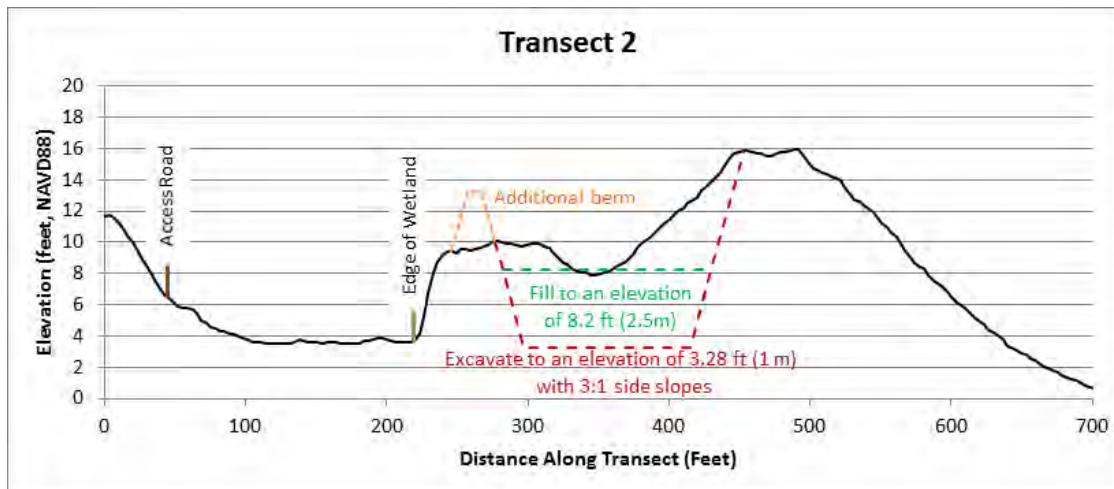


# Task 12.4 – Agency Coordination w/ NHESP

Aug. 13, 2019 – Request for pre-application consultation with NHESP

MESA filing will be required w/ 3 outcomes:

- No Take
- Implement conditions to avoid Take
- Take will occur and CMP will be required



Continued consultation:

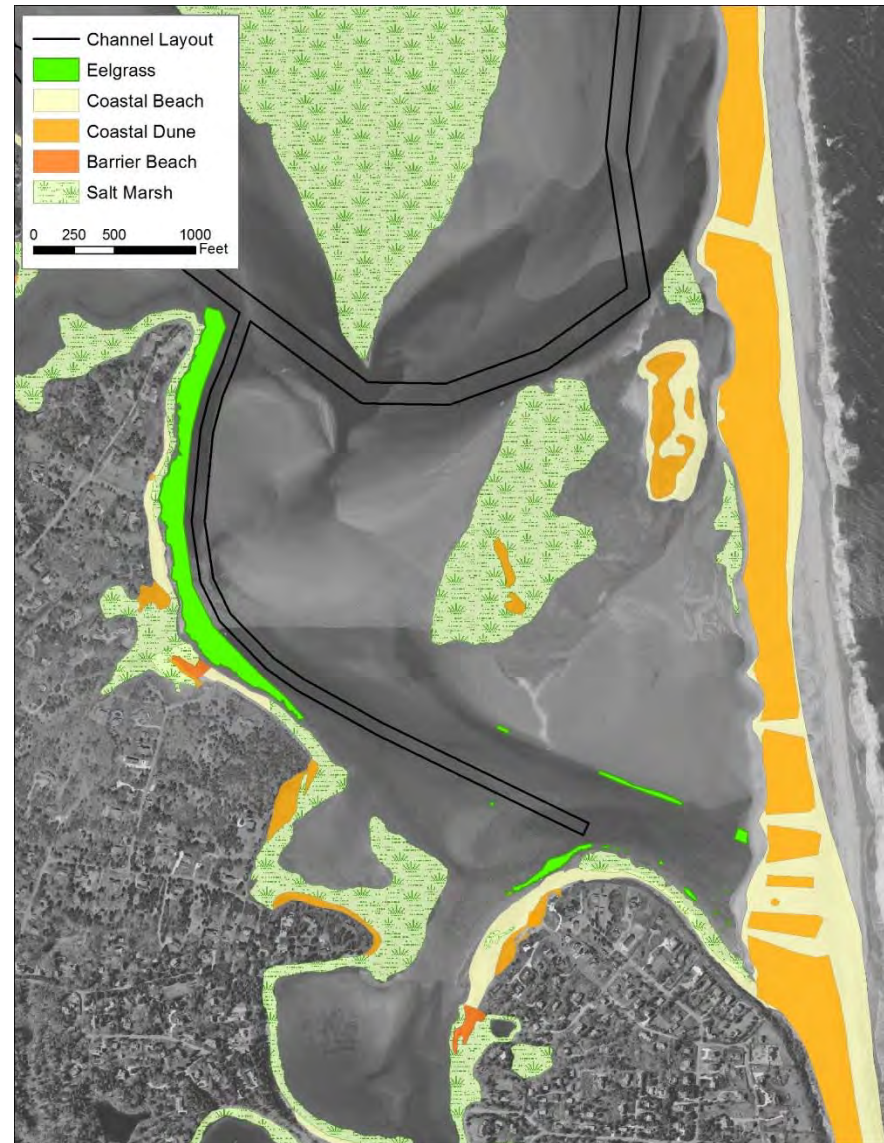
- Disposal alternatives, minimize size of basin, frequency of use, details on pipe, overall area of impact

## Task 12.7 – Agency Coordination w/ NOAA NMFS

Nov. 11, 2019 – Request for technical assistance with NMFS per Essential Fish Habitat (EFH)

Nov. 21, 2019 – NMFS recommendations

- No dredging within 100 ft of eelgrass
- Avoid dredging in intertidal areas
- Follow time of year restrictions for dredging to protect fisheries



## Task 12.8 – Agency Coordination w/ NOAA NMFS (cont)

Nov. 1, 2019 – Request for technical assistance with NMFS per Endangered Species Act (ESA)

Nov. 21, 2019 – NMFS comments

- Must consider project impacts on North Atlantic right whales, fin whales, sea turtles, sturgeon, piping plover, roseate tern
- Follow time of year restrictions for dredging to these species
- Consider use of silt curtains



# Task 12.5 & 12.6 – Red Tide Cyst Pilot

Nov. 1, 2019 – Filed Request for Determination of Applicability with Orleans Conservation Commission

Nov. 27, 2019 – Negative 2 determination issued allowing pilot to proceed

Dec. 9, 2019 – Sediment collected from Town Cove

Jan. 7, 2020 – Samples deployed in dunes north of Nauset Beach

Mid-Jan to Mid-April, 2020 – Weekly sampling



# Revised MOU & Draft SRP

Nov. 27, 2019 – Letter from CCNS stating that they cannot participate as a voting member of the NESG and therefore cannot sign on to MOU.

- Is it possible to revise MOU in such a way that would allow CCNS to sign?
- Revised MOU excluding CCNS

