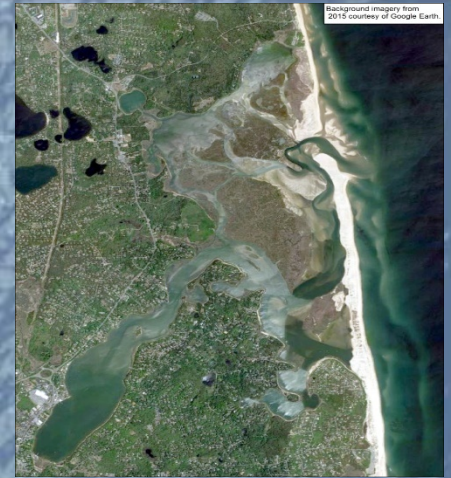
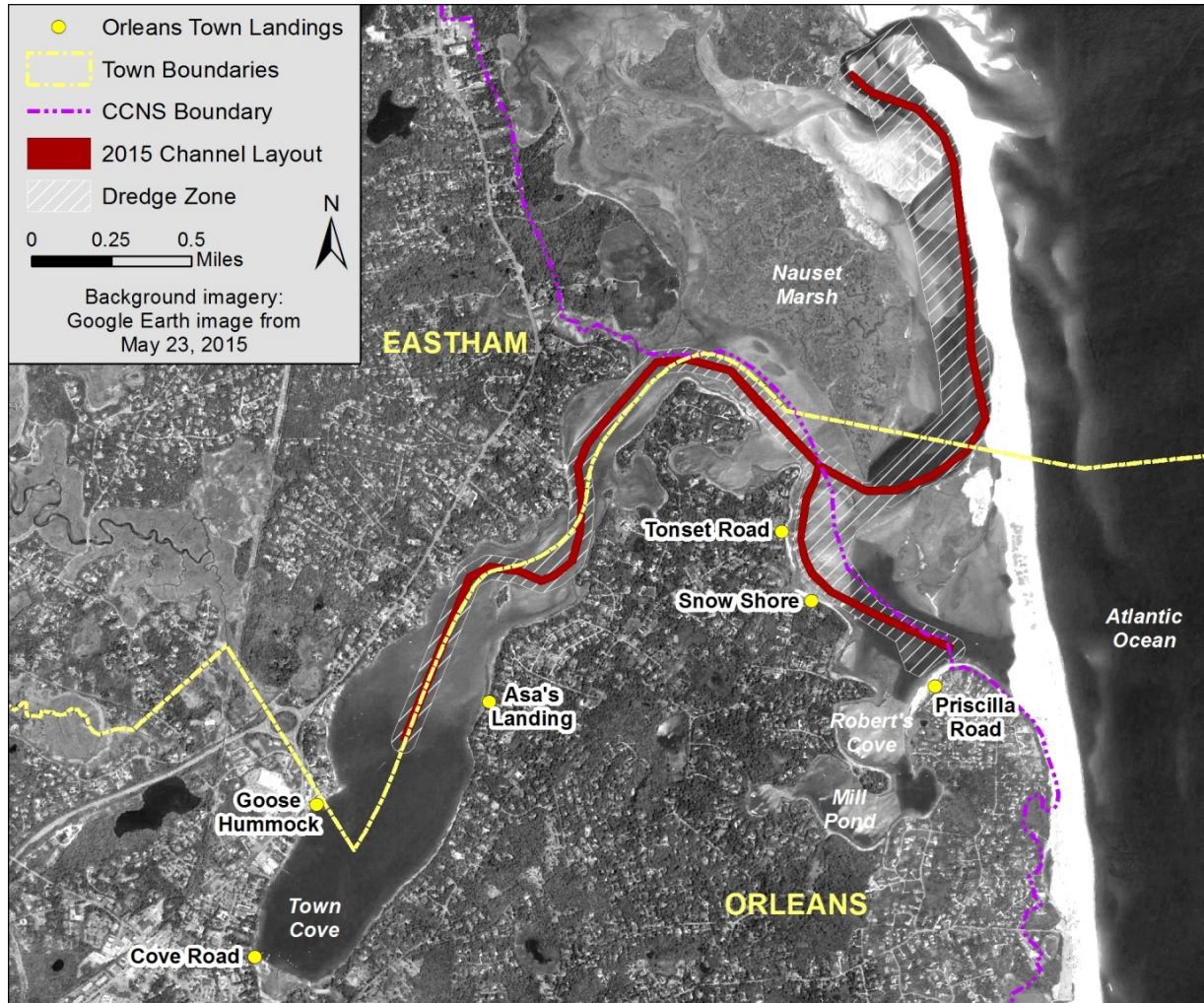


Nauset Estuary Dredging Project Update



Sept. 12, 2018

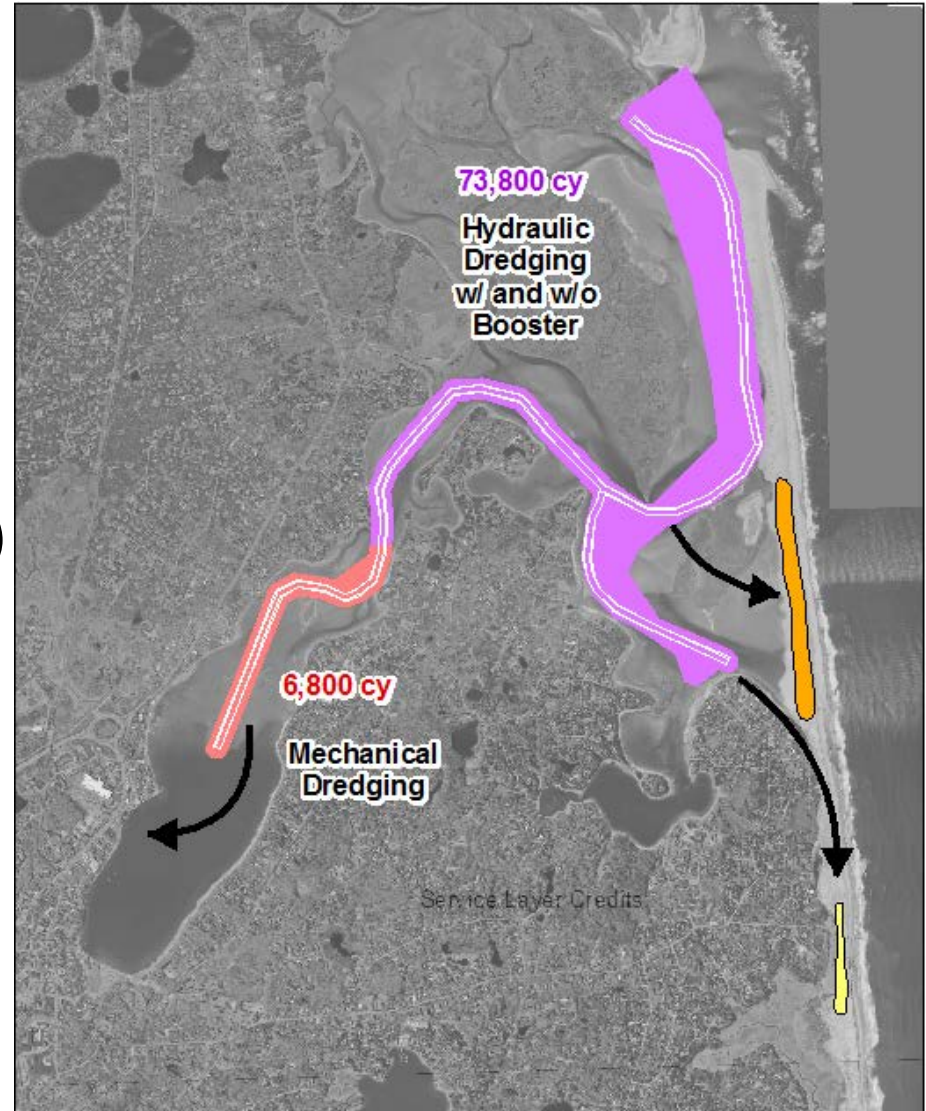
Project History



- *Improve navigation*
- *Improve public safety*

Project Components

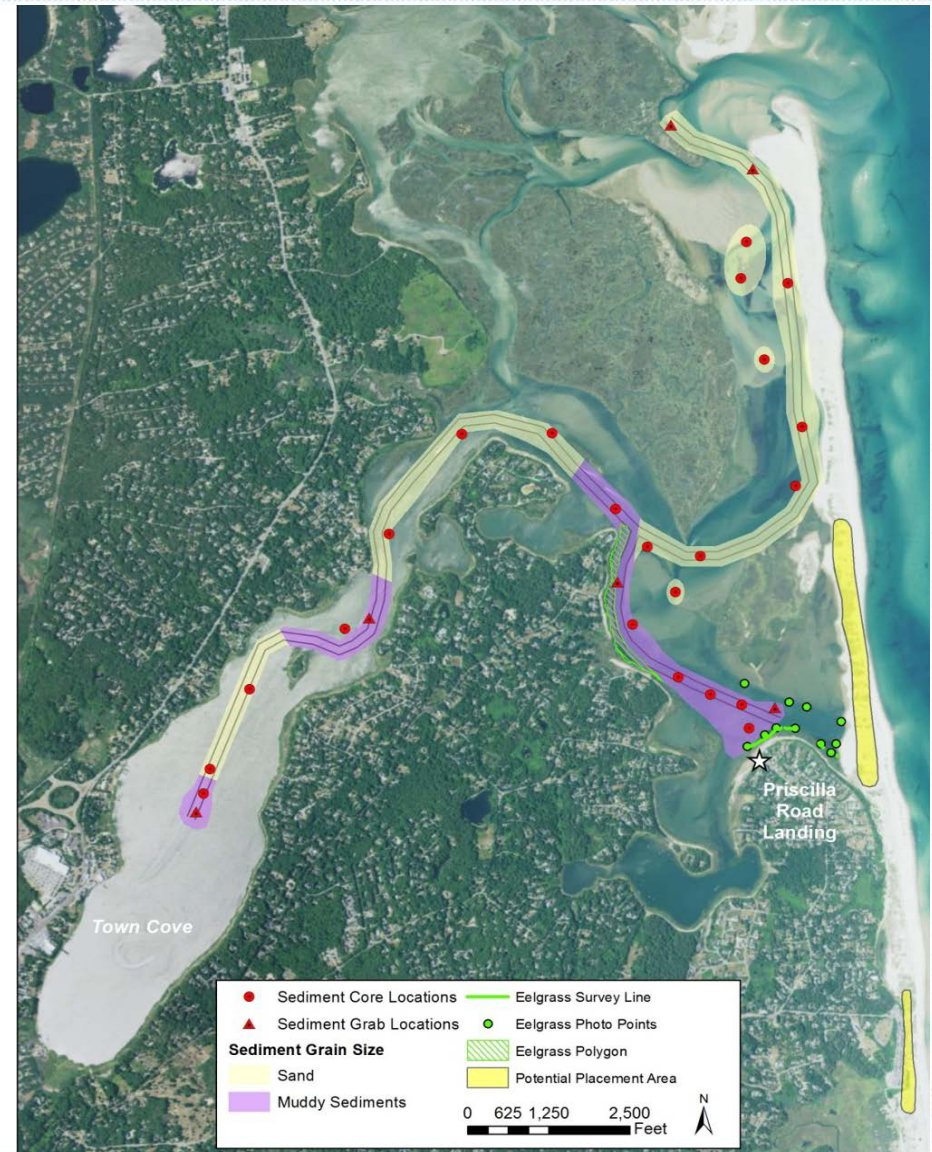
- dredge channel
- navigation and public safety
- 50 to 100 ft wide; -5 MLW
- 80,600 cy total
- beneficial reuse for beaches
- phased work (inner vs. outer)
- inner for upland stockpile
- outer for Nauset Beach
- stakeholders (Orleans, Eastham, CCNS, commercial fishermen, recreational boaters)



Activities Completed

Post Feasibility Study

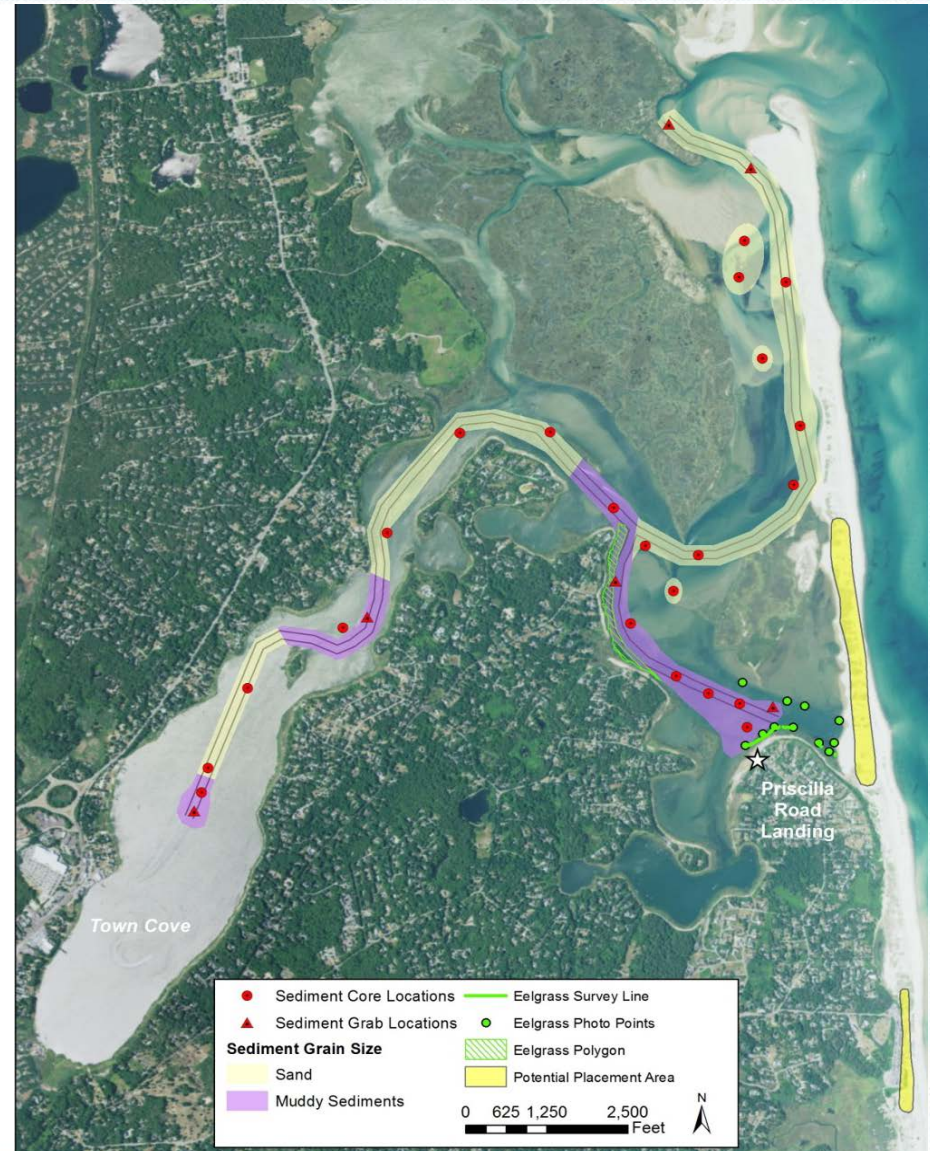
- eelgrass survey
- sediment coring
- CCNS meetings (red tide)
- shellfish impact assessment
- needs assessment
- stakeholder outreach
- contractor meetings
- alternate channel designs
- revised permit strategy



Activities Completed

Since Last Meeting

- CCNS meetings (red tide)
- stakeholder outreach (Eastham, CCNS)
- contractor meetings
- evaluate dewatering for mechanical dredging
- alternate channel designs
- revised permit strategy



Planned Work

- *collect tide data*
- *update bathy survey in select areas*
- *alternatives analysis (up to 4 channel alternatives)*
- *red tide pilot project*
- *stakeholder meetings*
- *engineering plans*
- *regulatory pre-app meetings*
- *permitting*



Regulatory Requirements

- *Joint NEPA/MEPA/CCC review & permitting*
 - *work within CCNS triggers NEPA*
 - *wetland alteration of > 10 acres triggers MEPA/CCC*
- *Orders of Conditions (Orleans & Eastham CC)*
- *Water Quality Certification (DEP)*
- *Chapter 91 Permit (DEP)*
- *Consistency Statement (CZM)*
- *Individual Permit (USACE)*

